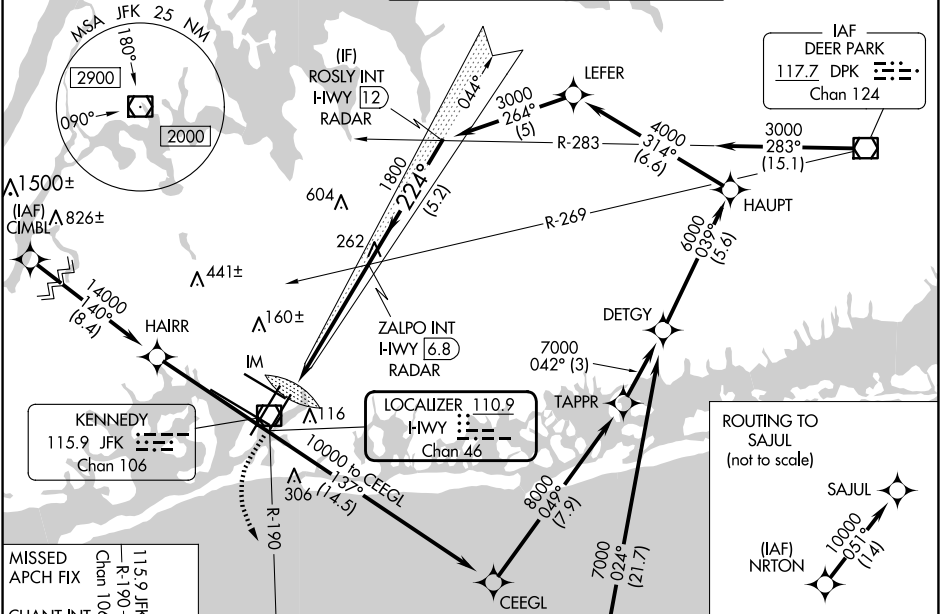


LOC/DME I-HWY <b>110.9</b> Chan <b>46</b>	APP CRS <b>224°</b>	Rwy Idg <b>8400</b> TDZE <b>12</b> Apt Elev <b>13</b>
-------------------------------------------------	------------------------	-------------------------------------------------------------

# ILS RWY 22L (CAT II & III)

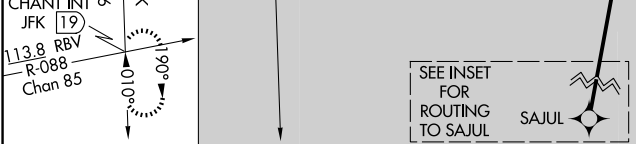
JOHN F KENNEDY INTL (JFK)

RNAV 1-GPS or RADAR required for procedure entry. From CIMBL, NRTON: RNAV 1-GPS required.			ALSIF-2 	MISSED APPROACH: Climb to 500 then climbing left turn to 3000 on JFK VOR/DME R-190 to CHANT INT/19 DME and hold.		
Simultaneous approach authorized.						
D-ATIS (ARR/DEP) (ARR-NE) (ARR-SW) <b>128.725 117.7 115.4</b>	NEW YORK APP CON <b>128.125 269.0</b>	KENNEDY TOWER Rwys 4R/22L and 13L/31R <b>119.1 281.55</b> Rwys 4L/22R and 13R/31L <b>123.9 281.55</b>	GND CON <b>121.9 348.6</b>	CLNC DEL <b>135.05 348.6</b>	CPDLC	

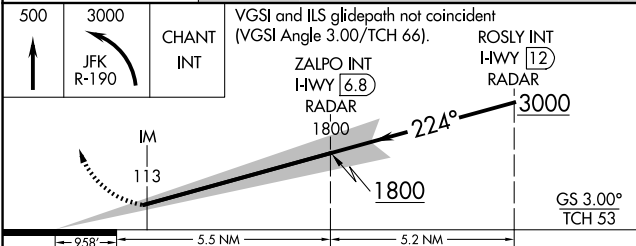


NE-2, 20 FEB 2025 to 20 MAR 2025

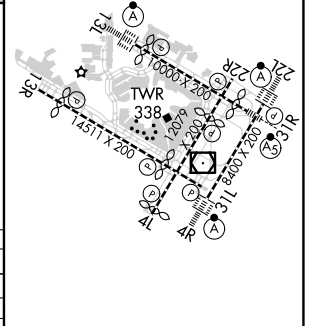
NE-2, 20 FEB 2025 to 20 MAR 2025



ELEV 13	<b>D</b>	TDZE 12
---------	----------	---------



CATEGORY	A	B	C	D
S-ILS 22L	CAT II RA 113/12 100 DA 112			
S-ILS 22L	CAT III RVR 06			



## CATEGORY II & III ILS - SPECIAL AIRCREW & AIRCRAFT CERTIFICATION REQUIRED

RLS Rwys 13L and 13R  
HIRL all Rwys  
TDZ/CL Rwys 4L, 4R, 13L, 22L and 31R