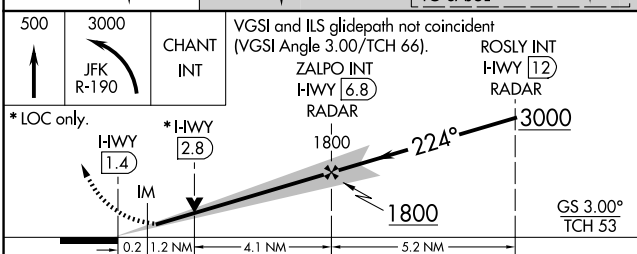
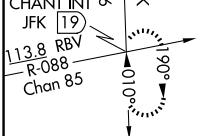
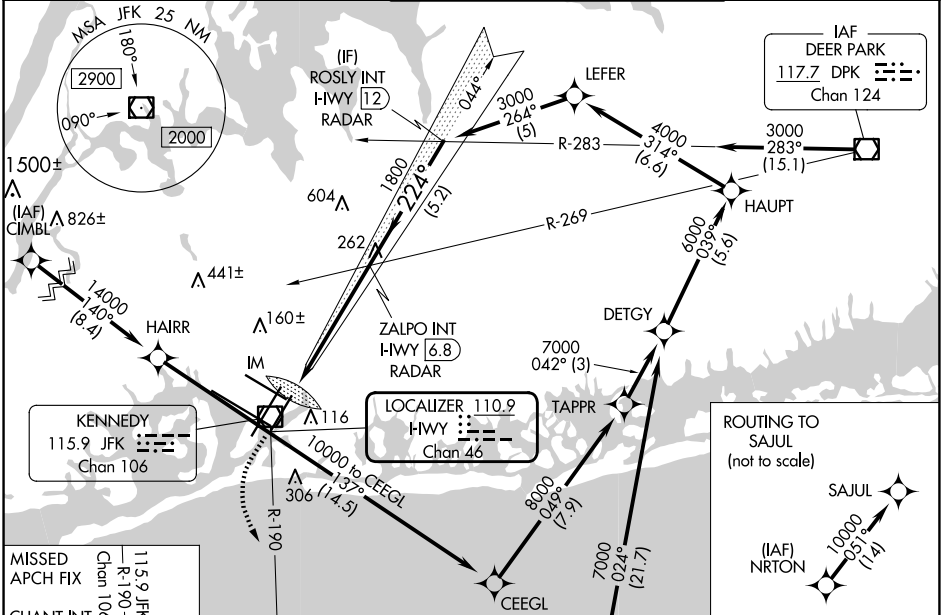


|                |             |          |             |
|----------------|-------------|----------|-------------|
| LOC/DME I-HWY  | APP CRS     | Rwy Idg  | <b>8400</b> |
| <b>110.9</b>   | <b>224°</b> | TDZE     | <b>12</b>   |
| Chan <b>46</b> |             | Apt Elev | <b>13</b>   |

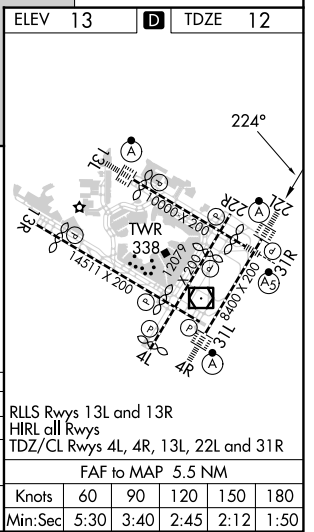
# ILS or LOC RWY 22L

JOHN F KENNEDY INTL (JFK)

|   |  |                      |  |  |  |  |                               |       |
|---|--|----------------------|--|--|--|--|-------------------------------|-------|
| RNAV 1-GPS or RADAR required for procedure entry. |  |                      |  | ALSF-2                                     |  | MISSED APPROACH: Climb to 500 then climbing left turn to 3000 on JFK VOR/DME R-190 to CHANT INT/19 DME and hold. |                               |       |
| From CIMBL, NRTON: RNAV 1-GPS required.           |  |                      |  | A  |  |  |                               |       |
| Simultaneous approach authorized.                 |  |                      |  | A  |  |  |                               |       |
| D-ATIS<br>(ARR/DEP) (ARR-NE) (ARR-SW)             |  | NEW YORK APP CON     |  | KENNEDY TOWER<br>Rwys 4R/22L and 13L/31R   |  | GND CON  | CLNC DEL                      | CPDLC |
| <b>128.725 117.7 115.4</b>                        |  | <b>128.125 269.0</b> |  | <b>119.1 281.55</b><br><b>123.9 281.55</b> |  | <b>121.9</b><br><b>348.6</b>   | <b>135.05</b><br><b>348.6</b> |       |
|   |  |                      |  | Rwys 4L/22R and 13R/31L                    |  |  |                               |       |



|            |                      |            |   |                          |
|------------|----------------------|------------|---|--------------------------|
| 500        | 3000                 | CHANT INT  | VGSi and ILS glidepath not coincident (VGSi Angle 3.00/TCH 66). |                          |
| JFK R-190  |                      |            | ZALPO INT HWY [6.8] RADAR                                       | ROSLY INT HWY [12] RADAR |
| *LOC only. | *HWY [1.4]           | *HWY [2.8] | 1800  | 3000                     |
|            | IM                   |            | 1800  | GS 3.00° TCH 53          |
|            | 0.2                  | 1.2 NM     | 4.1 NM  | 5.2 NM                   |
| CATEGORY   | A                    | B          | C   | D                        |
| S-ILS 22L  | 212/18               |            | 200 (200-1/2)   |                          |
| S-LOC 22L  | 520/24 508 (600-1/2) |            | 520/55 508 (600-1)  |                          |
| CIRCLING   | 640-1 627 (700-1)    |            | 680-1 3/4 667 (700-1 3/4) 680-2 667 (700-2)                     |                          |



NE-2, 20 FEB 2025 to 20 MAR 2025

NE-2, 20 FEB 2025 to 20 MAR 2025