

APP CRS	Rwy Idg	8400
224°	TDZE	12
	Apt Elev	13

RNAV (RNP) Z RWY 22L

JOHN F KENNEDY INTL (JFK)

RF required. RNP AR APCH.

▼ For uncompensated Baro-VNAV systems, procedure NA below -12°C (11°F) or above 54°C (130°F). Simultaneous approach authorized. Use of FD or AP providing RNAV track guidance required during simultaneous operations. For inop ALS, increase RNP 0.20 all Cats visibility to RVR 5500, increase RNP 0.30 all Cats visibility to RVR 6000.

ALSF-2

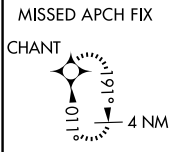
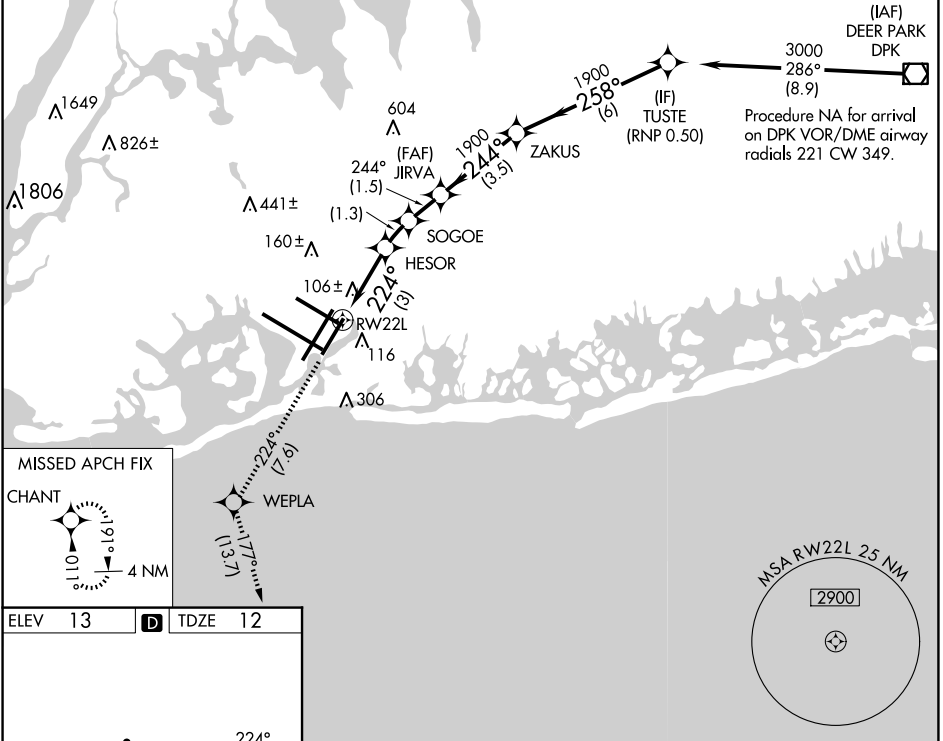


MISSED APPROACH: Climb to 3000 on track 224° to WEPLA and on track 177° to CHANT and hold.

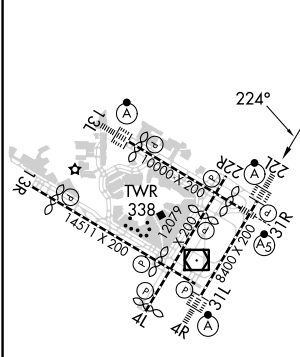
D-ATIS	NEW YORK APP CON	KENNEDY TOWER
(ARR/DEP) (ARR-NE) (ARR-SW)	Rwys 4R/22L and 13L/31R	Rwys 4L/22R and 13R/31L
128.725 117.7 115.4	128.125 269.0	119.1 281.55 123.9 281.55

GND CON	CLNC DEL	CPDLC
121.9	135.05	
348.6	348.6	

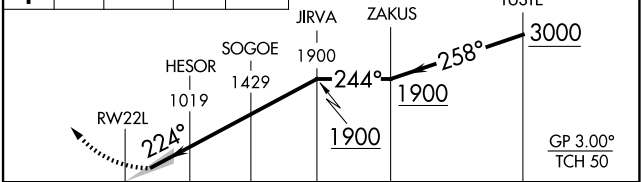
(IAF) DEER PARK DPK	3000	286°	(8.9)
Procedure NA for arrival on DPK VOR/DME airway radials 221 CW 349.			



ELEV 13	D	TDZE 12
---------	----------	---------



3000 tr 224° WEPLA tr 177° CHANT VGSJ and RNAV glidepath not coincident (VGSJ Angle 3.00/TCH 66).



CATEGORY	A	B	C	D
RNP 0.20 DA		361/40	349 (400-¾)	
RNP 0.30 DA		421/40	409 (500-¾)	

RLS Rwys 13L and 13R
HIRL all Rwys
TDZ/CL Rwys 4L, 4R, 13L, 22L and 31R

AUTHORIZATION REQUIRED

NE-2, 20 FEB 2025 to 20 MAR 2025

NE-2, 20 FEB 2025 to 20 MAR 2025