

| | |
|------------------------|--|
| APP CRS 314° | Rwy Idg 11247 TDZE 13 Apt Elev 13 |
|------------------------|--|

RNAV (RNP) Z RWY 31L

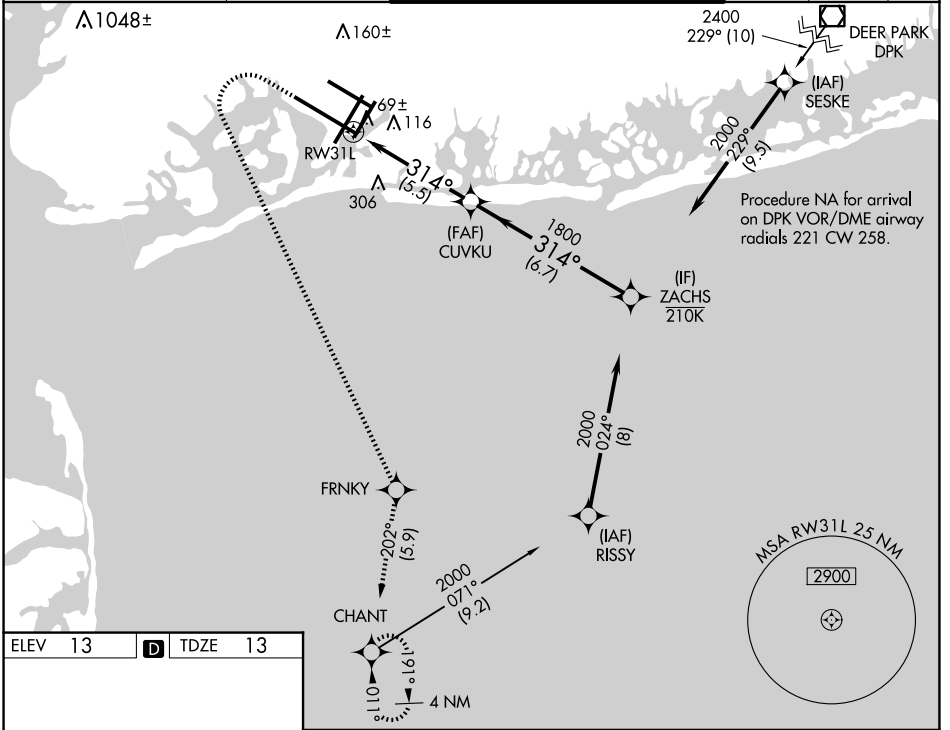
JOHN F KENNEDY INTL (JFK)

RNP AR APCH.

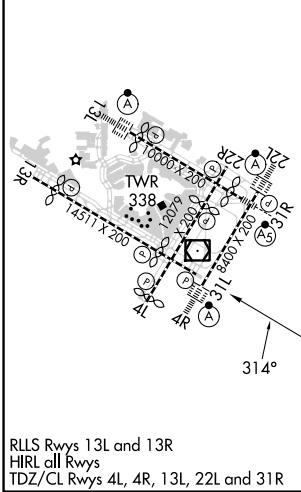
▼ For uncompensated Baro-VNAV systems, procedure NA below -12°C or above 54°C. Simultaneous approach authorized. Use of FD or AP required during simultaneous operations.

MISSED APPROACH: Climb to 500 then climbing left turn to 3000 direct FRNKY and on track 202° to CHANT and hold.

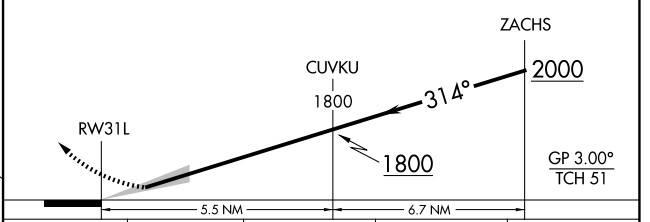
| | | | | | |
|--|--|---|-------------------------------|---------------------------------|-------|
| D-ATIS (ARR/DEP)(ARR-NE) (ARR-SW) 128.725 117.7 115.4 | NEW YORK APP CON 128.125 269.0 | KENNEDY TOWER Rwys 4R/22L and 13L/31R 119.1 281.55 Rwys 4L/22R and 13R/31L 123.9 281.55 | GND CON 121.9 348.6 | CLNC DEL 135.05 348.6 | CPDLC |
|--|--|---|-------------------------------|---------------------------------|-------|



| | | |
|---------|----------|---------|
| ELEV 13 | D | TDZE 13 |
|---------|----------|---------|



| | | | | |
|-----|------|-------|---------|--|
| 500 | 3000 | FRNKY | CHANT | VGSI and RNAV glidepath not coincident (VGSI Angle 3.00/TCH 74). |
| ↑ | ↶ | ✧ | tr 202° | ✧ |



| | | | | |
|-------------|---------------------|---|---|---|
| CATEGORY | A | B | C | D |
| RNP 0.30 DA | 410-1% 397 (400-1%) | | | |

NE-2, 20 FEB 2025 to 20 MAR 2025

NE-2, 20 FEB 2025 to 20 MAR 2025

AUTHORIZATION REQUIRED