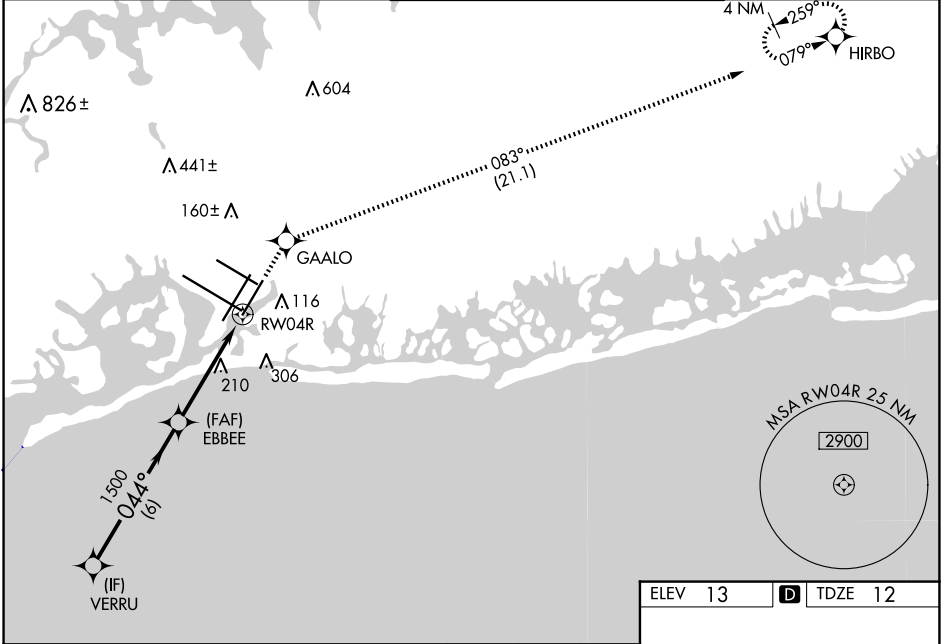


WAAS CH 81819	APP CRS 044°	Rwy Idg 8400 TDZE 12 Apt Elev 13
-------------------------	------------------------	---

RNAV (GPS) Y RWY 4R

JOHN F KENNEDY INTL (JFK)

RNP APCH.			KENNEDY TOWER Rwys 4R/22L and 13L/31R 119.1 281.55 Rwys 4L/22R and 13R/31L 123.9 281.55		GND CON 121.9 348.6	CLNC DEL 135.05 348.6	CPDLC
<p>Simultaneous approach authorized. LNAV procedure NA during simultaneous operations. Use of FD or AP providing RNAV track guidance required during simultaneous operations. For uncompensated Baro-VNAV systems, LNAV/VNAV NA below -12°C or above 54°C. For inop ALS, increase LNAV/VNAV all Cats visibility to RVR 6000 and LNAV Cat C/D visibility to 1½ SM.</p>			ALSIF-2		MISSED APPROACH: (Do not exceed 210K until GAALO) Climb to 4000 direct GAALO and on track 083° to HIRBO and hold.		
D-ATIS (ARR/DEP) (ARR-NE) (ARR-SW)		NEW YORK APP CON					
128.725 117.7 115.4		128.125 269.0					



NE-2, 20 FEB 2025 to 20 MAR 2025

NE-2, 20 FEB 2025 to 20 MAR 2025

VGSi and RNAV glidepath not coincident (VGSi Angle 3.00/TCH 69).				4000	GAALO	fr 083°	HIRBO
<p>VERRU</p> <p>GP 3.00° TCH 53</p> <p>2000</p> <p>044°</p> <p>1500</p> <p>1500</p> <p>6 NM</p> <p>3.1 NM</p> <p>1.4 NM</p> <p>*LNAV only</p> <p>*1.4 NM to RWY04R</p>							
CATEGORY	A	B	C	D			
LPV DA		212/18	200 (200-½)				
LNAV/VNAV DA		369/40	357 (400-¾)				
LNAV MDA	520/24	508 (600-½)	520/55	508 (600-1)			
CIRCLING	640-1	627 (700-1)	680-1¾ 667 (700-1¾)	680-2 667 (700-2)			

