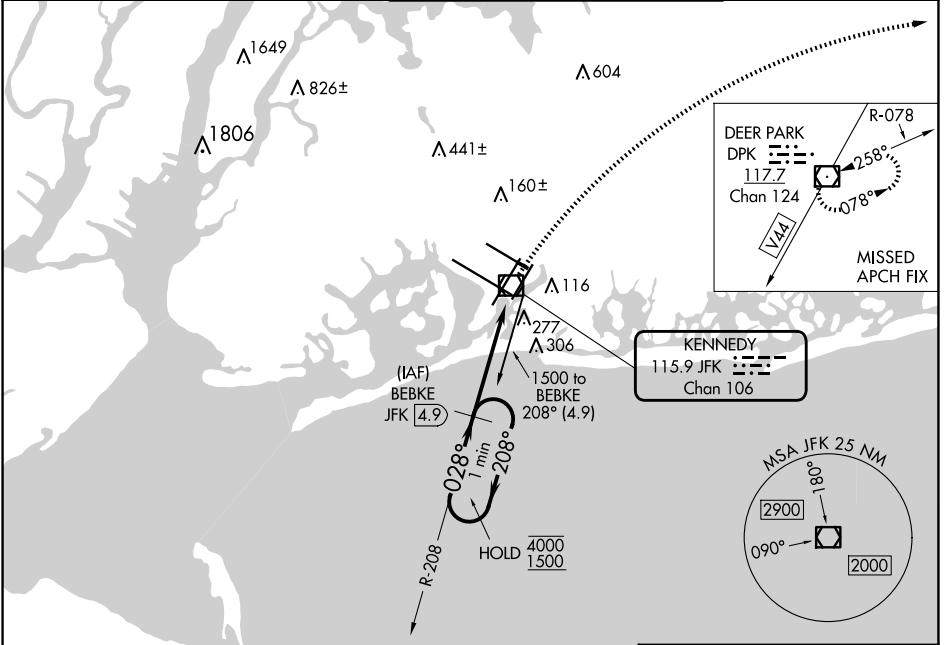


VOR/DME JFK 115.9 Chan 106	APP CRS 028°	Rwy Idg 8400 TDZE 12 Apt Elev 13
--	------------------------	---

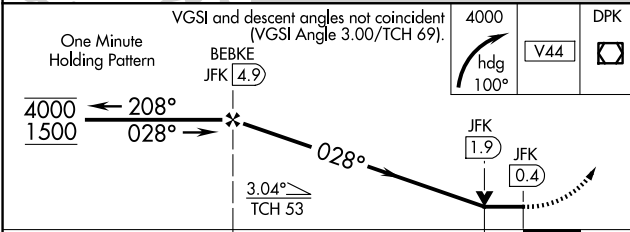
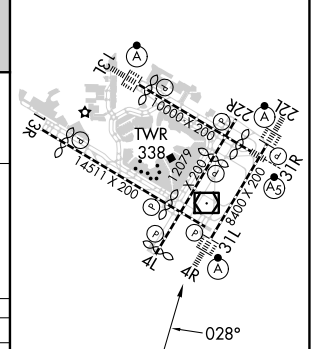
VOR RWY 4R

JOHN F KENNEDY INTL (JFK)

DME or RADAR required for procedure entry.		ALSIF-2 	MISSED APPROACH: Climbing right turn to 4000 on heading 100° and V44 to DPK VOR/DME and hold.		
D-ATIS (ARR/DEP) (ARR-NE) (ARR-SW) 128.725 117.7 115.4	NEW YORK APP CON 128.125 269.0	KENNEDY TOWER Rwys 4R/22L and 13L/31R 119.1 281.55 Rwys 4L/22R and 13R/31L 123.9 281.55	GND CON 121.9 348.6	CLNC DEL 135.05 348.6	CPDLC



ELEV 13	D TDZE 12
RLLS Rwys 13L and 13R HIRL all Rwys TDZ/CL Rwys 4L, 4R, 13L, 22L and 31R	



VGSI and descent angles not coincident (VGSI Angle 3.00/TCH 69).	4000	DPK		
One Minute Holding Pattern				
BEBKE JFK 4.9	JFK 1.9	JFK 0.4		
4000 ← 208°	→ 028°	→ 028°		
1500				
	3.04° TCH 53			
	2.9 NM	1.5		
CATEGORY	A	B	C	D
S-4R	540/24	528 (600-1/2)	540/50 528 (600-1)	540/60 528 (600-1 1/4)
C CIRCLING	640-1	627 (700-1)	680-1 3/4 667 (700-1 3/4)	680-2 667 (700-2)

FAF to MAP 4.4 NM					
Knots	60	90	120	150	180
Min:Sec	4:24	2:56	2:12	1:46	1:28

NE-2, 20 FEB 2025 to 20 MAR 2025

NE-2, 20 FEB 2025 to 20 MAR 2025