

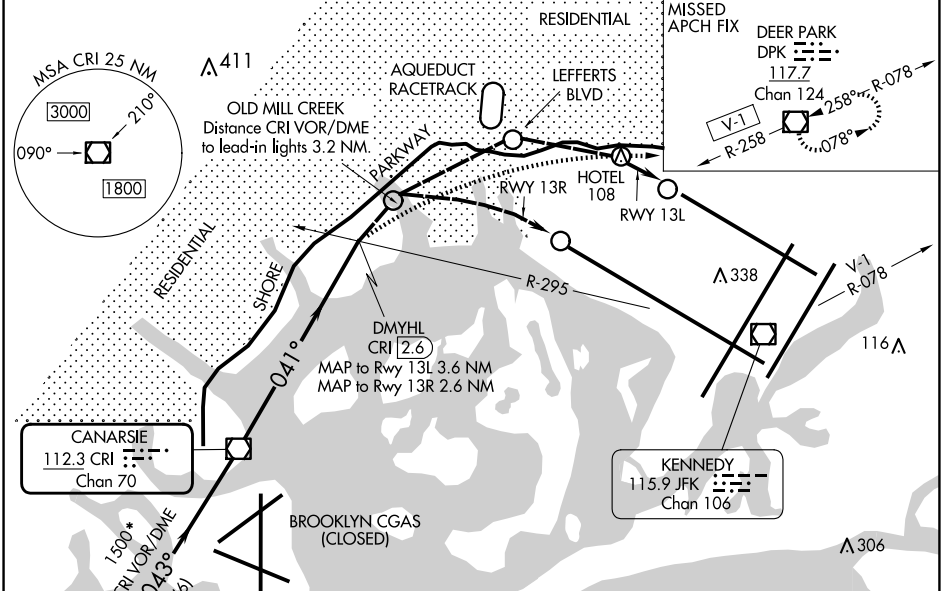
VOR/DME CRI 112.3 Chan 70	APP CRS 041°	Rwy Idg 13R 12467 TDZE 13L 9093 Apt Elev 13
----------------------------------------	------------------------	------------------------------------------------------------------------

VOR or GPS RWY 13L/R

JOHN F KENNEDY INTL (JFK)

For inop lead-in lights, procedure NA.	Rwy 13L ALSF-2 	MISSED APPROACH: At or beyond MAP, climbing right turn to 4000 on heading 100° and V-1 to DPK VOR/DME and hold.
		MISSED APPROACH FIX DEER PARK DPK 117.7 Chan 124 258°-R-078

D-ATIS (ARR/DEP)(ARR-NE) (ARR-SW) 128.725 117.7 115.4	NEW YORK APP CON 128.125 269.0	KENNEDY TOWER Rwys 4R/22L and 13L/31R 119.1 281.55 Rwys 4L/22R and 13R/31L 123.9 281.55	GND CON 121.9 348.6	CLNC DEL 135.05 348.6	CPDLC
--------------------------------------------------------------------	------------------------------------------	-------------------------------------------------------------------------------------------------------------	-------------------------------	---------------------------------	-------



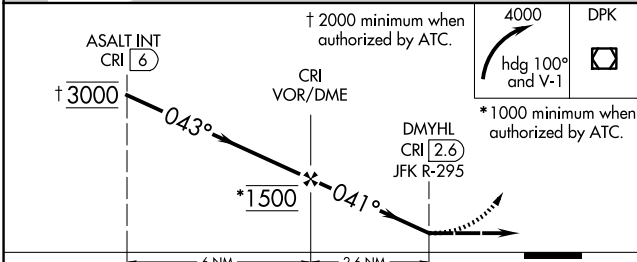
DME or RADAR REQUIRED

○ Lead-in light groups

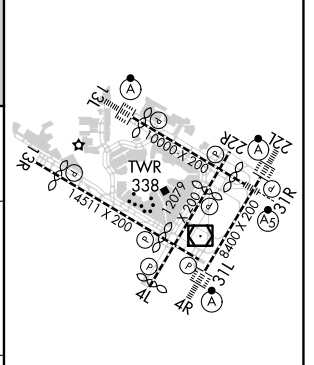
When visual reference established, fly visual to airport via lead-in lights to Rwy 13L or 13R. Close adherence to flight track required for noise abatement.

† 2000 minimum when authorized by ATC.

* 1000 minimum when authorized by ATC.



ELEV 13	TDZE 13
---------	---------



CATEGORY	A	B	C	D
RLLS-13L	800-2 787 (800-2)	800-2½ 787 (800-2¼)	800-2½ 787 (800-2¼)	800-2½ 787 (800-2¼)
RLLS-13R	800-2 787 (800-2)	800-2½ 787 (800-2¼)	800-2½ 787 (800-2¼)	800-2½ 787 (800-2¼)

RLLS Rwys 13L and 13R	HRL all Rwys				
TDZ/CL Rwys 4L, 4R, 13L, 22L and 31R	FAF to MAP 2.6 NM				
Knots	60	90	120	150	180
Min:Sec	2:36	1:44	1:18	1:02	0:52

NE-2, 20 FEB 2025 to 20 MAR 2025

NE-2, 20 FEB 2025 to 20 MAR 2025