

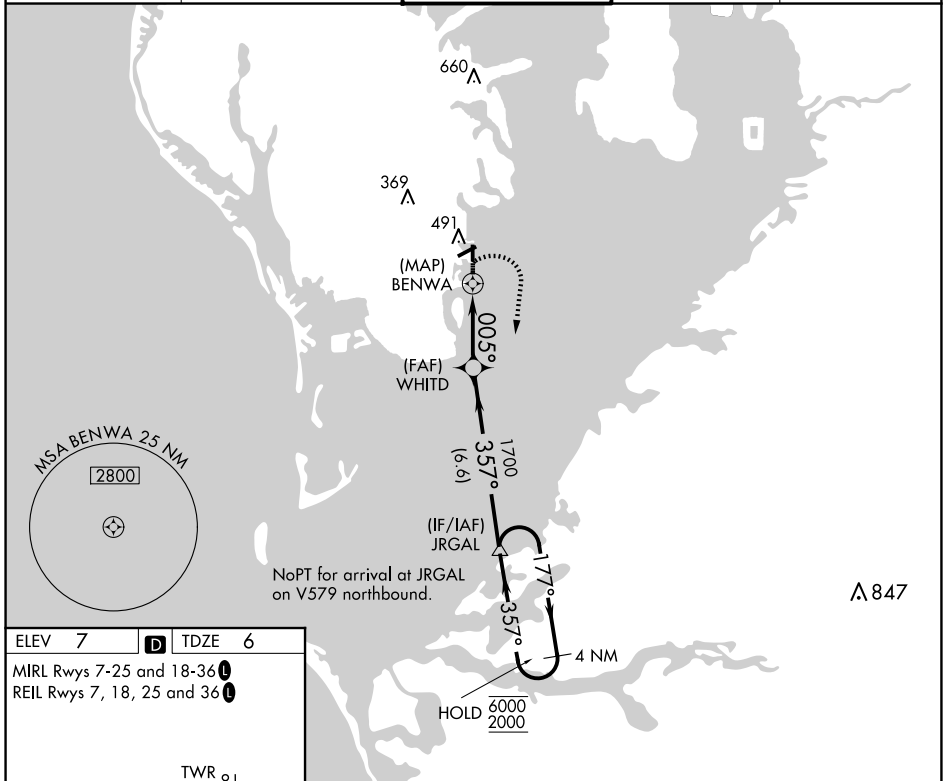
APP CRS <b>005°</b>	Rwy Idg TDZE Apt Elev	<b>2559</b> <b>6</b> <b>7</b>
------------------------	-----------------------------	-------------------------------------

# RNAV (GPS) RWY 36

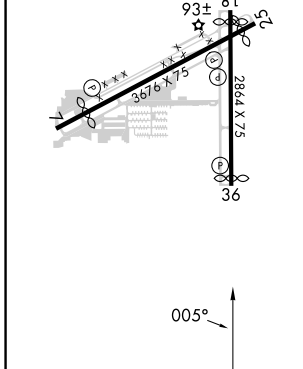
ALBERT WHITTED (SPG)

RNP APCH - GPS.	MISSED APPROACH: Climbing right turn to 2000 direct JRGAL and hold.
<p>▼ Circling NA northwest of Rwy 7 and 18. Procedure NA at night.</p> <p>▲ Rwy 36 helicopter visibility reduction below 1 SM NA.</p>	

ASOS <b>118.875</b>	TAMPA APP CON <b>119.65 316.05 (EAST)</b> <b>125.3 316.05 (WEST)</b>	WHITTED TOWER ★ <b>127.4 (CTAF) 0 257.6</b>	GND CON <b>121.8</b>	UNICOM <b>122.95</b>
------------------------	--	--	-------------------------	-------------------------



ELEV 7	<b>D</b>	TDZE 6
MIRL Rwy 7-25 and 18-36		
REIL Rwy 7, 18, 25 and 36		



2000	JRGAL	4 NM Holding Pattern		
	WHITTED	JRGAL		
	BENWA	1700		
		177° → 6000		
		← 357° 2000		
		3.3 NM		
		6.6 NM		
CATEGORY	A	B	C	D
LNAV MDA	540-1 $\frac{1}{8}$	534 (600-1 $\frac{1}{8}$ )		NA
<b>C</b> CIRCLING	540-1 $\frac{1}{4}$	533 (600-1 $\frac{1}{4}$ )		NA

SE-3, 20 FEB 2025 to 20 MAR 2025

SE-3, 20 FEB 2025 to 20 MAR 2025