

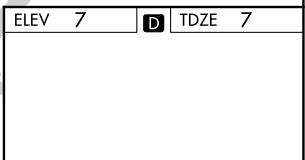
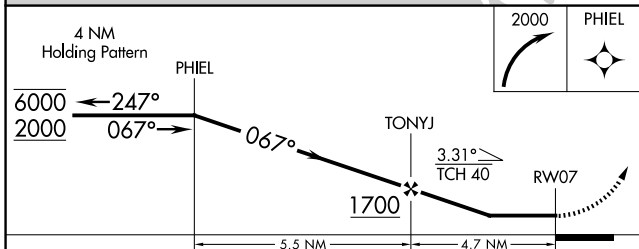
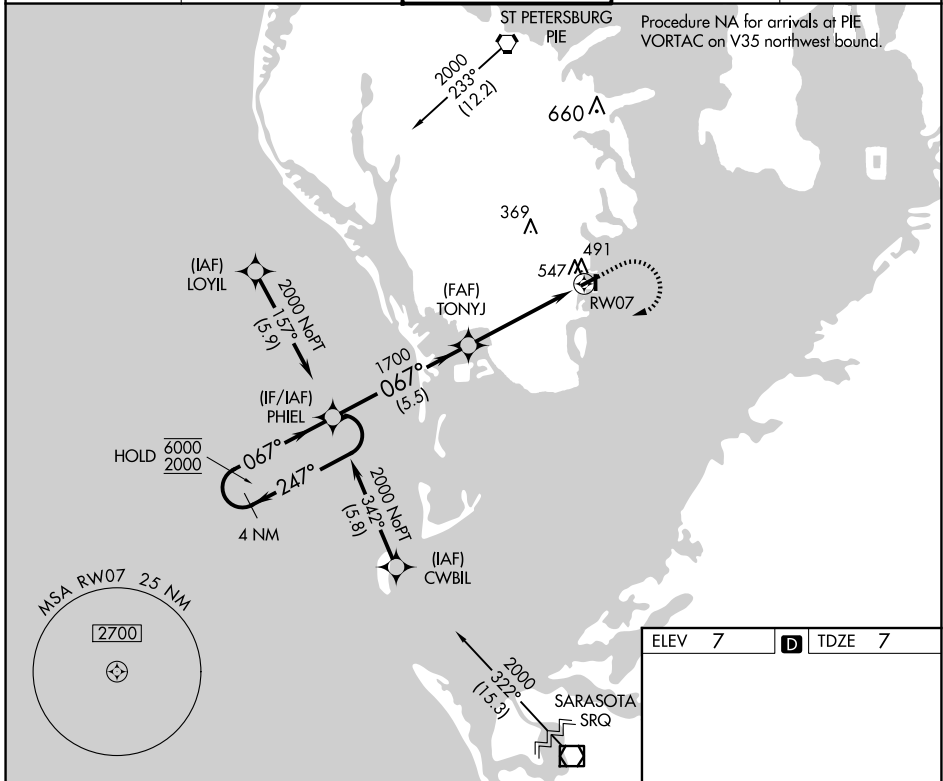
APP CRS	Rwy Idg	2849
067°	TDZE	7
	Apt Elev	7

RNAV (GPS) RWY 7

ALBERT WHITTED (SPG)

RNP APCH - GPS.	MISSED APPROACH: Climbing right turn to 2000 direct PHIEL and hold.
<p>⚠ Circling NA northwest of Rws 7 and 18. Procedure NA at night.</p> <p>⚠ Rwy 7 helicopter visibility reduction below 1 SM NA.</p>	

ASOS 118.875	TAMPA APP CON 119.65 316.05 (EAST) 125.3 316.05 (WEST)	WHITTED TOWER ★ 127.4 (CTAF) 0 257.6	GND CON 121.8	UNICOM 122.95
------------------------	--	--	-------------------------	-------------------------



CATEGORY	A	B	C	D
LNAV MDA	800-1 793 (800-1)	800-1¼ 793 (800-1¼)	800-2½ 793 (800-2½)	NA
Ⓢ CIRCLING	800-1 793 (800-1)	800-1¼ 793 (800-1¼)	800-2½ 793 (800-2½)	NA

MIRL Rws 7-25 and 18-36
REIL Rws 7, 18, 25 and 36

SE-3, 20 FEB 2025 to 20 MAR 2025

SE-3, 20 FEB 2025 to 20 MAR 2025