

LOM IA	APP CRS	Rwy ldg	<b>9129</b>
<b>329</b>	<b>280°</b>	TDZE	<b>588</b>
		Apt Elev	<b>592</b>

# NDB RWY 28R

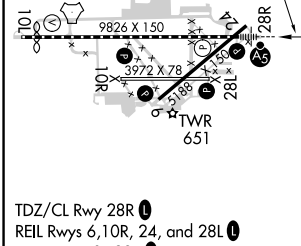
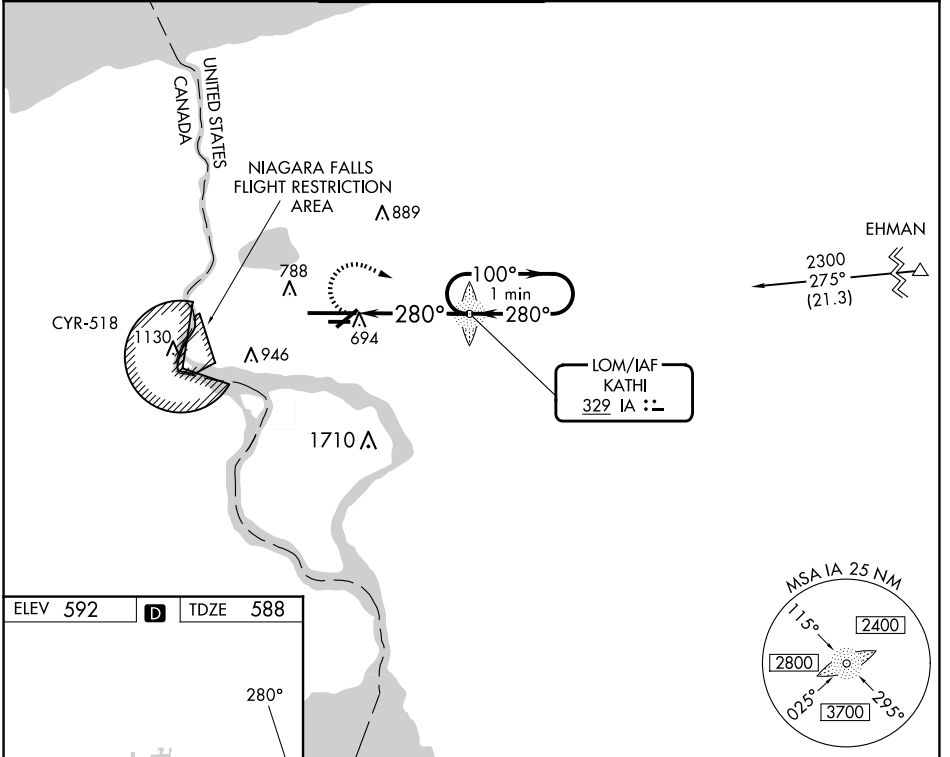
NIAGARA FALLS INTL (IAG)

**⚠** When local altimeter setting not received, use Buffalo Niagara Intl altimeter setting and increase all MDA 60 feet, increase S-28R Cat C and D visibility 1/4 SM and Circling Cat C and D 1/4 SM. For inop MALSRL, increase S-28R Cats A/B visibility to RVR 5500 and Cats C/D visibility to 1 1/2. For inop MALSRL when using Buffalo Niagara Intl altimeter setting, increase S-28R Cats C/D visibility to 1 1/2. Rwy 28R helicopter visibility reduction below 1 SM NA. Circling Rwy 6, 10R, 24, 28L NA at night.

**MALSRL**

**MISSED APPROACH:**  
Climbing right turn to 3200 direct KATHI LOM and hold, continue climb-in-hold to 3200.

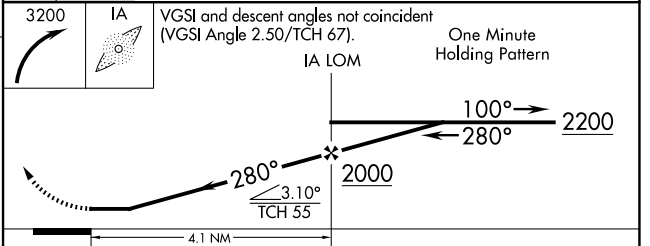
ATIS	BUFFALO APP CON	NIAGARA TOWER★	GND CON	CLNC DEL	UNICOM
<b>120.8 269.4</b>	<b>126.5 317.6</b>	<b>118.5 (CTAF) 0 349.0</b>	<b>125.3 275.8</b>	<b>119.25 251.1</b>	<b>122.95</b>



TDZ/CL Rwy 28R **1**  
REIL Rws 6, 10R, 24, and 28L **1**  
HIRL Rwy 10L-28R **1**  
MIRL Rws 6-24 and 10R-28L **1**

FAF to MAP 4.1 NM

Knots	60	90	120	150	180
Min:Sec	4:06	2:44	2:03	1:38	1:22



CATEGORY	A	B	C	D
S-28R	1200/40	612 (700-3/4)	1200-1 3/8	612 (700-1 3/8)
<b>C</b> CIRCLING	1200-1	608 (700-1)	1280-2 688 (700-2)	1280-2 1/4 688 (700-2 1/4)

NE-2, 20 FEB 2025 to 20 MAR 2025

NE-2, 20 FEB 2025 to 20 MAR 2025