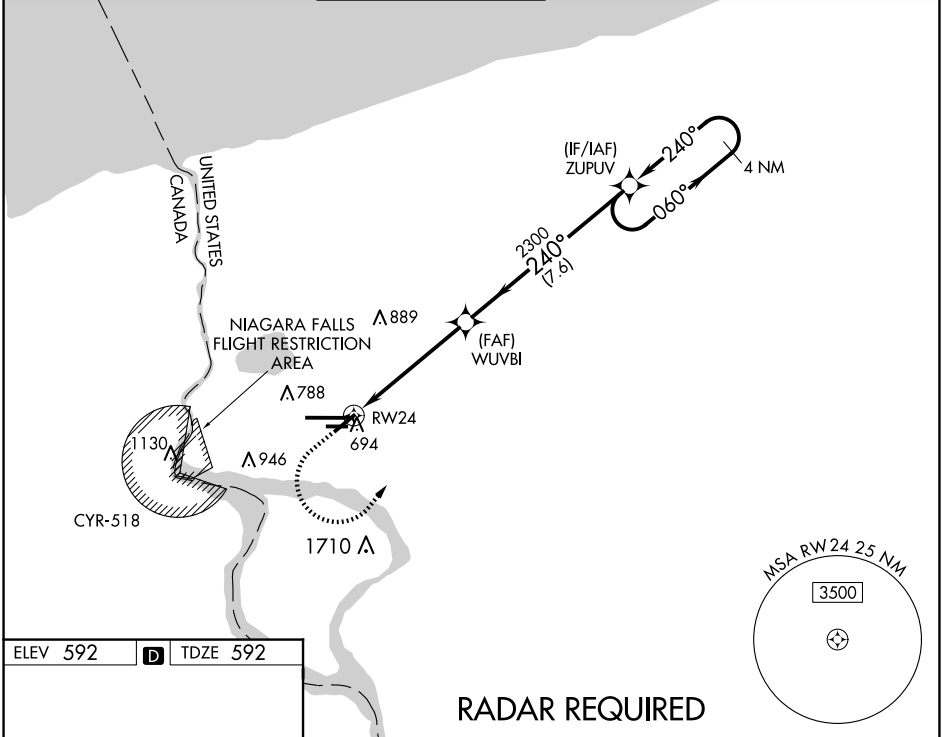


| | | | |
|--|------------------------|-----------------------------|---|
| WAAS CH 97333 W24B | APP CRS 240° | Rwy ldg TDZE Apt Elev | 5108 592 592 |
|--|------------------------|-----------------------------|---|

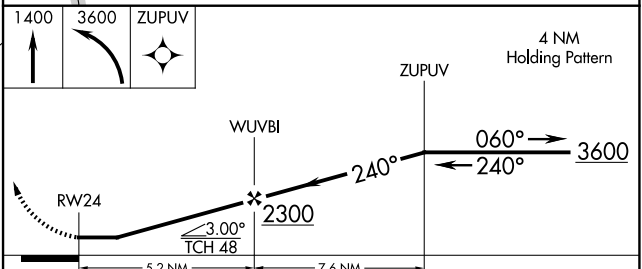
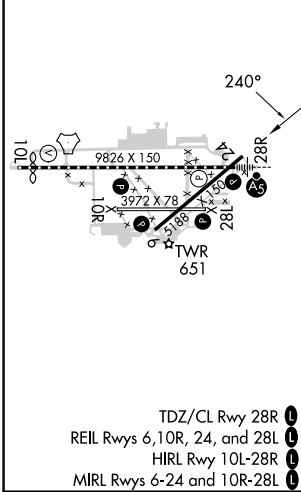
RNAV (GPS) Y RWY 24

NIAGARA FALLS INTL (IAG)

| | | | | | |
|---|---------------------------------------|---|-------------------------------|---------------------------------|-------------------------|
| <p>▼ DME/DME RNP-0.3 NA. When local altimeter setting not received, use Buffalo Niagara Intl altimeter setting and increase all MDA 60 feet and increase LP Cats C and D visibility 1/8 mile and Circling Cats A and D visibility 1/4 mile. Rwy 6, 10R, 24, 28L helicopter visibility reduction below 1 SM NA. Straight-in Rwy 24 NA at night, Circling Rwy 6, 10R, 24, 28L NA at night.</p> | | <p>MISSED APPROACH: Climb to 1400 then climbing left turn to 3600 direct ZUPOV and hold.</p> | | | |
| ATIS 120.8 269.4 | BUFFALO APP CON 126.5 317.6 | NIAGARA TOWER ★ 118.5 (CTAF) 0 349.0 | GND CON 125.3 275.8 | CLNC DEL 119.25 251.1 | UNICOM 122.95 |



| | | |
|----------|----------|----------|
| ELEV 592 | D | TDZE 592 |
|----------|----------|----------|



| CATEGORY | | A | B | C | D |
|-------------------|---------|-----------------------|-------------------------------|------------|-----------------|
| LP | MDA | 1180-1 | 588 (600-1) | 1180-1 3/4 | 588 (600-1 3/4) |
| LN | NAV MDA | 1360-1 768 (800-1) | 1360-1 1/4 768 (800-1 1/4) | 1360-2 1/2 | 768 (800-2 1/2) |
| C CIRCLING | | 1360-1 768 (800-1) | 1360-1 1/4 768 (800-1 1/4) | 1360-2 1/2 | 768 (800-2 1/2) |

NE-2, 20 FEB 2025 to 20 MAR 2025

NE-2, 20 FEB 2025 to 20 MAR 2025