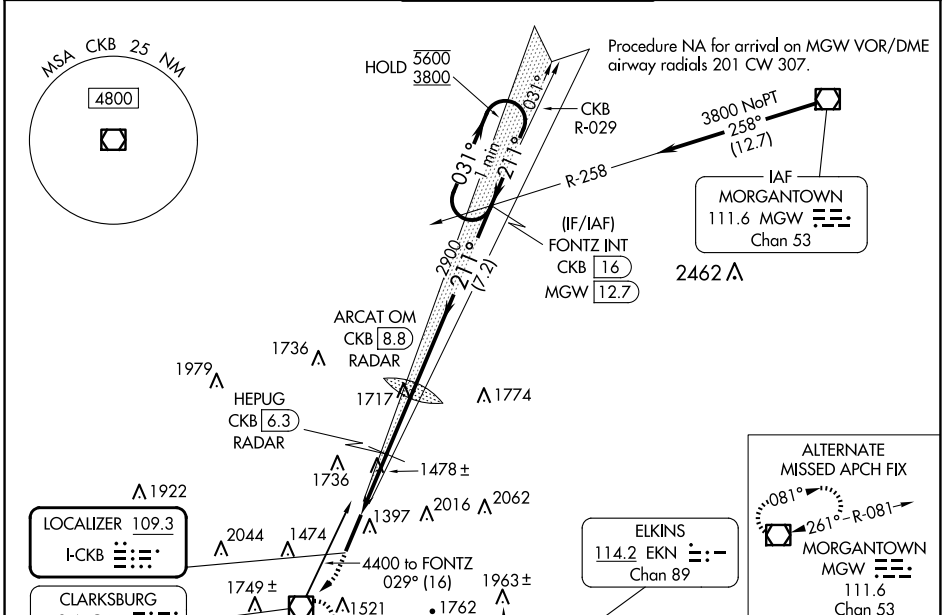


LOC I-CKB	APP CRS	Rwy Ldg	7130
109.3	211°	TDZE	1224
		Apt Elev	1224

ILS or LOC RWY 21

NORTH CENTRAL WEST VIRGINIA (CKB)

For inop ALS, increase S-LOC 21 Cat C/D visibility to 2½ SM, and HEPUG fix minimums Cat C/D visibility to 1½ SM. DME from CKB VOR/DME. Autopilot coupled approach NA below 2000.		MISSED APPROACH: Climb to 1800 then climbing right turn to 3200 direct CKB VOR/DME and hold, continue climb-in-hold to 3200.		
		ATIS 127.825	CLARKSBURG APP CON ★ 121.15 284.65	CLARKSBURG TOWER ★ 126.7 (CTAF) 0 257.925



ELEV 1224	TDZE 1224
REIL Rwy 3 HIRL Rwy 3-21	
FAF to MAP 4.9 NM	
Knots	60 90 120 150 180
Min:Sec	4:54 3:16 2:27 1:58 1:38

CATEGORY	A	B	C	D
S-ILS 21		1424/24	200 (200-½)	
S-LOC 21	2020/24 796 (800-½)	2020/40 796 (800-¾)	2020-1¾ 796 (800-1¾)	
CIRCLING	2020-1 796 (800-1)	2040-1¼ 816 (900-1¼)	2320-3 1096 (1100-3)	
HEPUG FIX MINIMUMS (DME or RADAR REQUIRED)				
S-LOC 21	1740/24 516 (600-½)	1740/55 516 (600-1)		
CIRCLING	1940-1 716 (800-1)	2040-1¼ 816 (900-1¼)	2320-3 1096 (1100-3)	

NE-4, 20 FEB 2025 to 20 MAR 2025

NE-4, 20 FEB 2025 to 20 MAR 2025