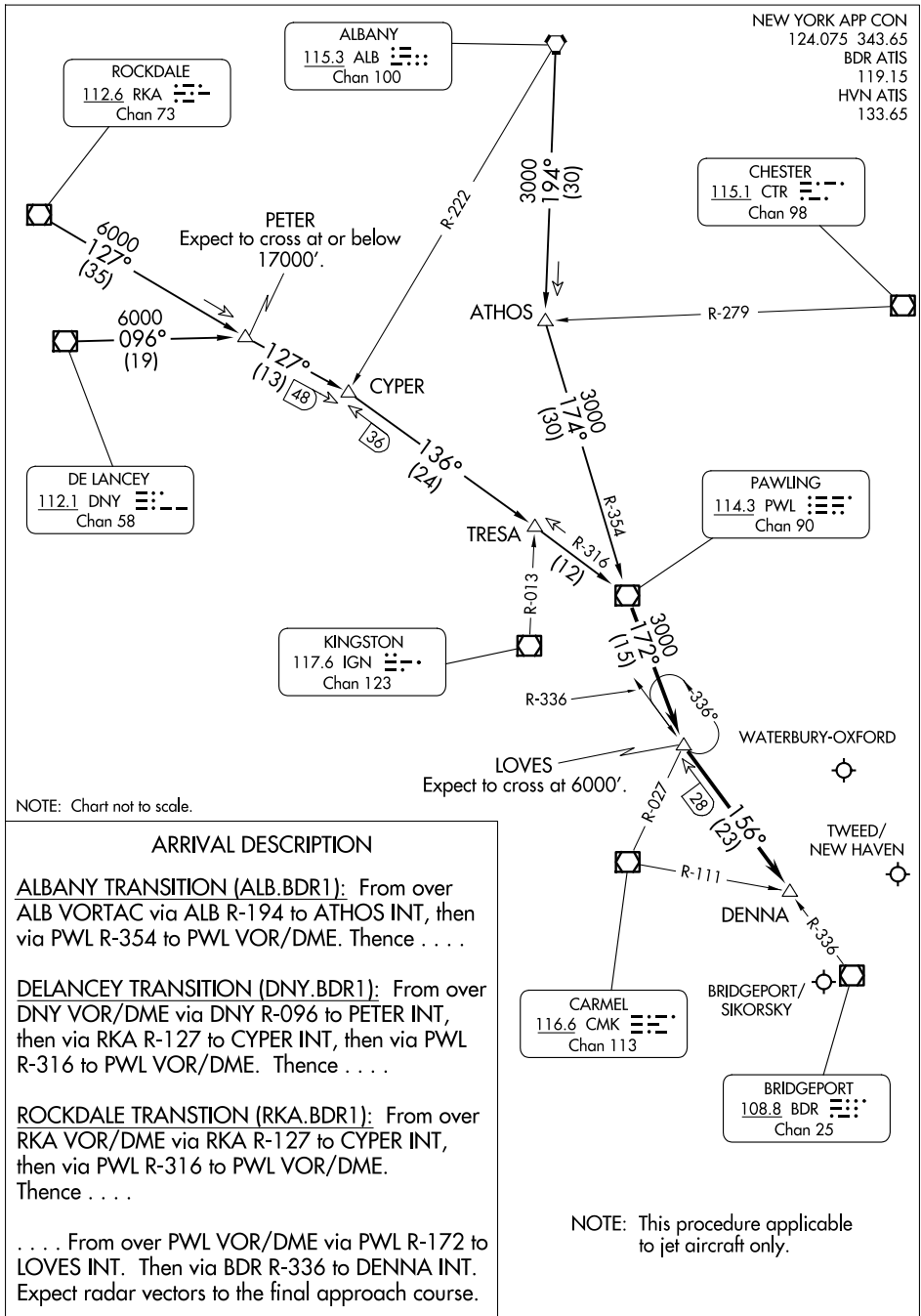


BRIDGEPORT ONE ARRIVAL

AL-621 (FAA)

BRIDGEPORT, CONNECTICUT



NEW YORK APP CON
124.075 343.65
BDR ATIS
119.15
HVN ATIS
133.65

ALBANY
115.3 ALB
Chan 100

ROCKDALE
112.6 RKA
Chan 73

CHESTER
115.1 CTR
Chan 98

DE LANCEY
112.1 DNY
Chan 58

KINGSTON
117.6 IGN
Chan 123

PAWLING
114.3 PWL
Chan 90

CARME
116.6 CMK
Chan 113

BRIDGEPORT
108.8 BDR
Chan 25

NOTE: Chart not to scale.

ARRIVAL DESCRIPTION

ALBANY TRANSITION (ALB.BDR1): From over ALB VORTAC via ALB R-194 to ATHOS INT, then via PWL R-354 to PWL VOR/DME. Thence

DELANCEY TRANSITION (DNY.BDR1): From over DNY VOR/DME via DNY R-096 to PETER INT, then via RKA R-127 to CYPAR INT, then via PWL R-316 to PWL VOR/DME. Thence

ROCKDALE TRANSITION (RKA.BDR1): From over RKA VOR/DME via RKA R-127 to CYPAR INT, then via PWL R-316 to PWL VOR/DME. Thence

. . . . From over PWL VOR/DME via PWL R-172 to LOVES INT. Then via BDR R-336 to DENNA INT. Expect radar vectors to the final approach course.

NOTE: This procedure applicable to jet aircraft only.

NE-1, 20 FEB 2025 to 20 MAR 2025

NE-1, 20 FEB 2025 to 20 MAR 2025

BRIDGEPORT ONE ARRIVAL

BRIDGEPORT, CONNECTICUT