

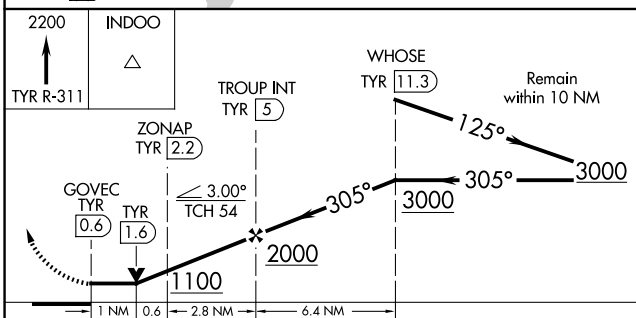
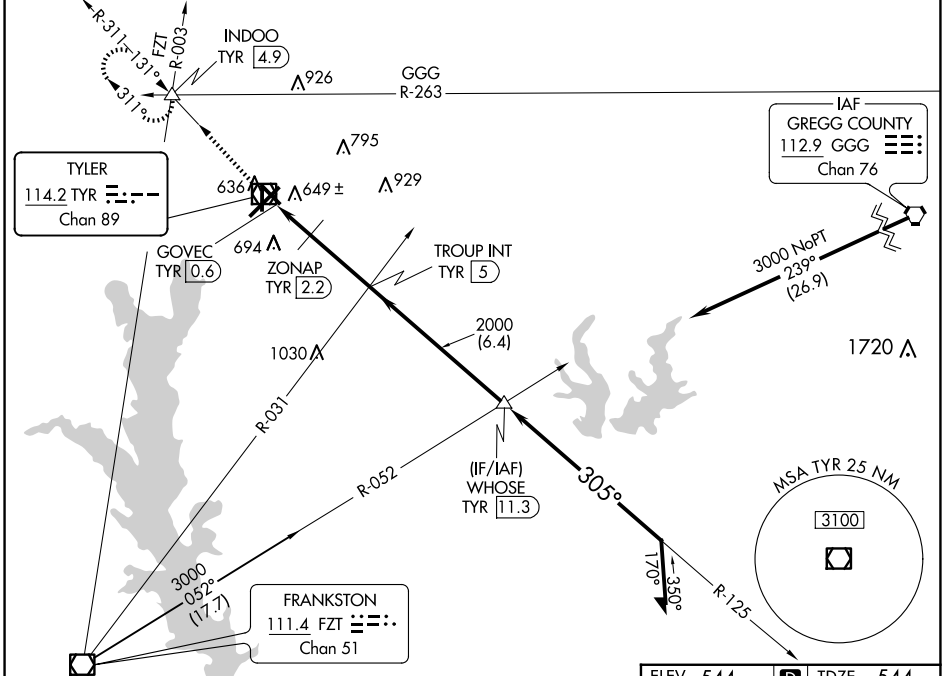
VOR/DME TYR	APP CRS	Rwy Idg	5198
114.2	305°	TDZE	544
Chan 89		Apt Elev	544

# VOR RWY 31

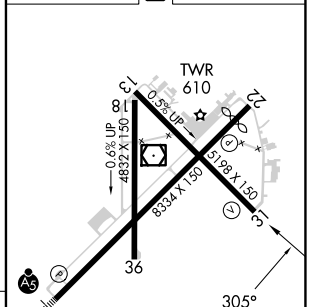
TYLER POUNDS RGNL (TYR)

**▼** Rwy 31 helicopter visibility reduction below 3/4 SM NA. **▲** MISSED APPROACH: Climb to 2200 on TYR VOR/DME R-311 to INDOO INT/4.9 DME and hold.

ATIS <b>126.25</b>	LONGVIEW APP CON ★ <b>128.75 379.15</b>	POUNDS TOWER ★ <b>120.1 (CTAF) 257.8</b>	GND CON <b>121.9</b>	UNICOM <b>122.95</b>
-----------------------	--	---	-------------------------	-------------------------



ELEV 544 **D** TDZE 544



CATEGORY	A	B	C	D
S-31	1100-1	556 (600-1)	1100-1 1/2	556 (600-1 1/2)
<b>C</b> CIRCLING	1100-1	556 (600-1)	1160-1 1/4 616 (700-1 1/4)	1280-2 1/4 736 (800-2 1/4)
ZONAP FIX MINIMUMS (DME REQUIRED)				
S-31	920-1 376 (400-1)			
<b>C</b> CIRCLING	980-1 436 (500-1)	1020-1 476 (500-1)	1160-1 1/4 616 (700-1 1/4)	1280-2 1/4 736 (800-2 1/4)

REIL Rwy 22 <b>1</b>	FAF to MAP 4.4 NM
MIRL Rwy 18-36 <b>1</b>	
HIRL Rwys 4-22 and 13-31 <b>1</b>	
Knots	60 90 120 150 180
Min:Sec	4:24 2:56 2:12 1:46 1:28

SC-2, 20 FEB 2025 to 20 MAR 2025

SC-2, 20 FEB 2025 to 20 MAR 2025