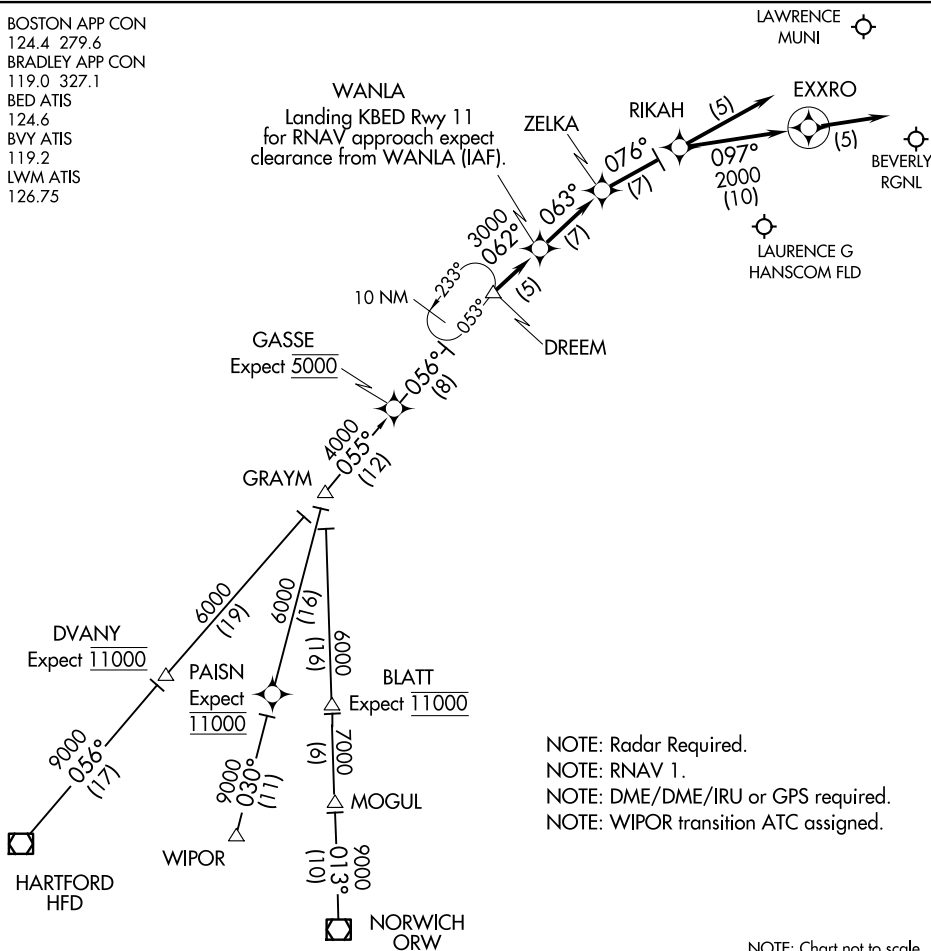


# DREEM TWO ARRIVAL (RNAV)

BEDFORD, MASSACHUSETTS

BOSTON APP CON  
124.4 279.6  
BRADLEY APP CON  
119.0 327.1  
BED ATIS  
124.6  
BVY ATIS  
119.2  
LWM ATIS  
126.75

WANLA  
Landing KBED Rwy 11  
for RNAV approach expect  
clearance from WANLA (IAF).



NOTE: Radar Required.  
NOTE: RNAV 1.  
NOTE: DME/DME/IRU or GPS required.  
NOTE: WIPOR transition ATC assigned.

NOTE: Chart not to scale.

HARTFORD TRANSITION (HFD.DREEM2):  
NORWICH TRANSITION (ORW.DREEM2):  
WIPOR TRANSITION (WIPOR.DREEM2):

LANDING BVY ALL RWYS, BED RWY 23 & 29: From DREEM on track 062° to WANLA , then on track 063° to ZELKA, then on track 076° to RIKAH, then on track 097° to EXXRO, then on track 097°.

LANDING BED RWY 11: From DREEM on track 062° to WANLA, then on track 063° to ZELKA. Expect ILS approach.

LANDING LWM ALL RWYS: From DREEM on track 062° to WANLA, then on track 063° to ZELKA, then on track 076° to RIKAH, then on track 076°, expect radar vectors to final approach course.

# DREEM TWO ARRIVAL (RNAV)

BEDFORD, MASSACHUSETTS

NE-1, 20 FEB 2025 to 20 MAR 2025

NE-1, 20 FEB 2025 to 20 MAR 2025