

GRAYM SIX ARRIVAL

AL-626 (FAA)

BEDFORD, MASSACHUSETTS

BOSTON APP CON
124.4 279.6
BRADLEY APP CON
119.0 327.1
BED ATIS
124.6
BVY ATIS
119.2
LWM ATIS
126.75

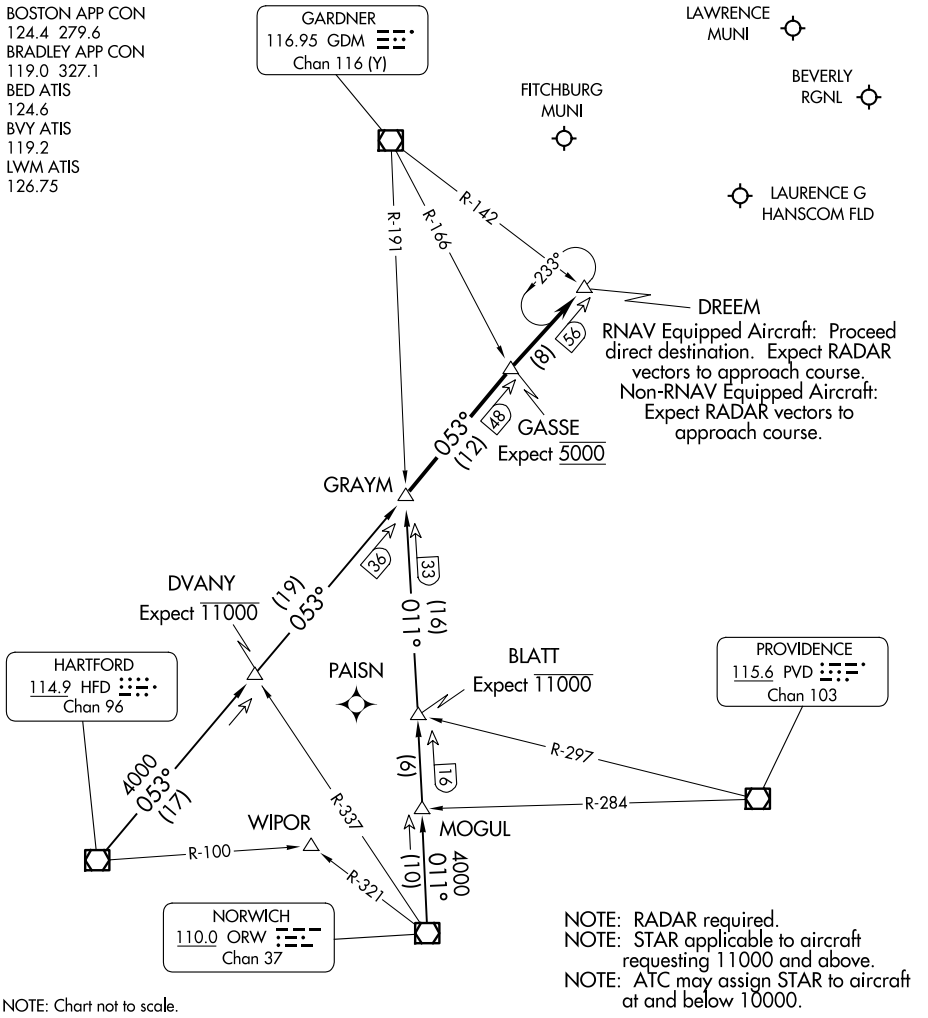
GARDNER
116.95 GDM
Chan 116 (Y)

LAWRENCE MUNI

FITCHBURG MUNI

BEVERLY RGNL

LAURENCE G HANSCOM FLD



NOTE: Chart not to scale.

NOTE: RADAR required.
NOTE: STAR applicable to aircraft requesting 11000 and above.
NOTE: ATC may assign STAR to aircraft at and below 10000.

ARRIVAL ROUTE DESCRIPTION

HARTFORD TRANSITION (HFD.GRAYM6): From over HFD VOR/DME on HFD R-053 to GRAYM. Thence. . .

NORWICH TRANSITION (ORW.GRAYM6): From over ORW VOR/DME on ORW R-011 to GRAYM. Thence. . .

. . . . From over GRAYM on HFD R-053 to GASSE, then to DREEM, at DREEM:

RNAV EQUIPPED AIRCRAFT: Proceed direct destination expect radar vectors to approach course.

NON-RNAV EQUIPPED AIRCRAFT: Expect radar vectors to approach course.

GRAYM SIX ARRIVAL

BEDFORD, MASSACHUSETTS

NE-1, 20 FEB 2025 to 20 MAR 2025

NE-1, 20 FEB 2025 to 20 MAR 2025