

LOC I-FSM <b>111.3</b>	APP CRS <b>260°</b>	Rwy Idg TDZE Apt Elev	<b>9318</b> <b>448</b> <b>469</b>
---------------------------	------------------------	-----------------------------	---


# ILS Z or LOC Z RWY 26

FORT SMITH RGNL (FSM)

DME required.

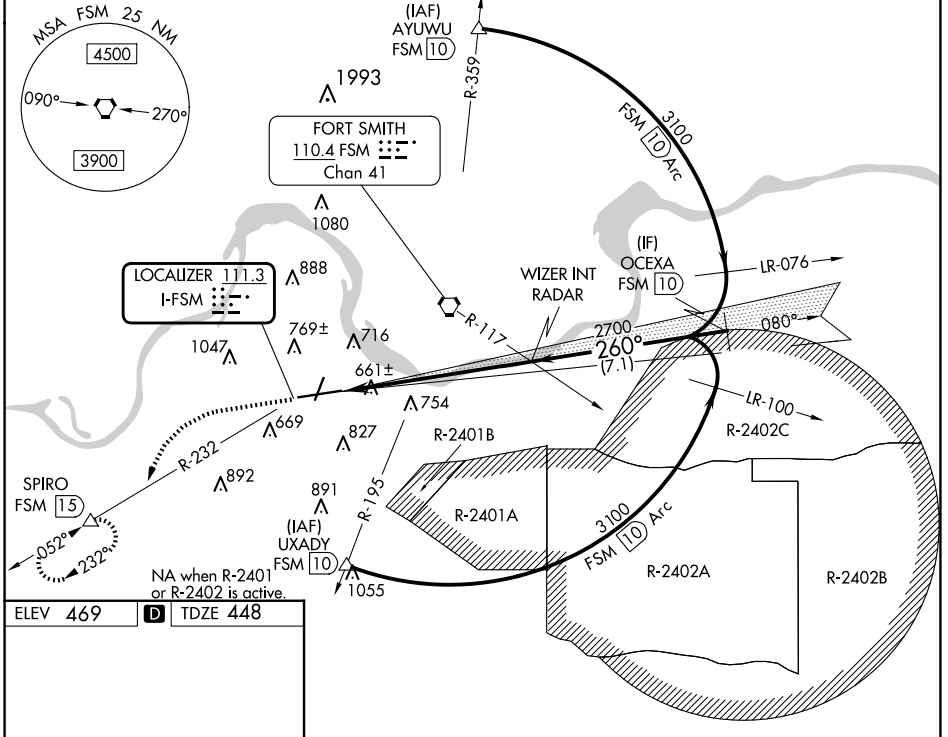
**⚠** Circling NA for Cat E when R-2401B active. Circling NA for Cat E northwest of Rwy 8 and 20. For inop ALS, increase S-ILS 26 Cat E visibility to RVR ASR 4000 and S-LOC 26 Cat C/D/E to 1 1/2 SM. Circling Rwy 20, 26 NA at night. \*RVR 1800 authorized with use of FD or AP or HUD to DA.

**MALSR**

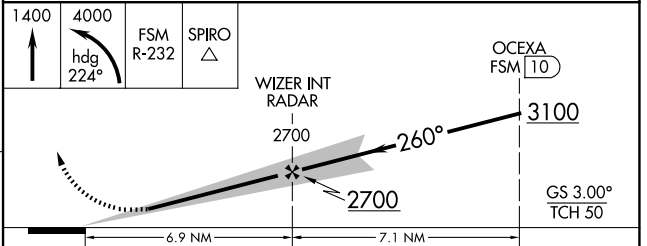
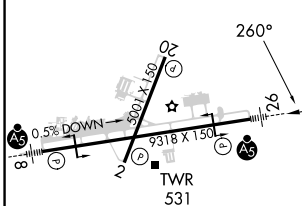


**MISSED APPROACH:** Climb to 1400 then climbing left turn to 4000 on heading 224° and FSM VORTAC R-232 to SPIRO/FSM 15 DME and hold, continue climb-in-hold to 4000.

ATIS <b>124.775</b>	RAZORBACK APP CON* <b>120.9 343.75</b>	FORT SMITH TOWER* <b>118.3 (CTAF) 0 323.175</b>	GND CON <b>121.9 275.8</b>	CLNC DEL <b>133.85 278.3</b>	UNICOM <b>122.95</b>
------------------------	---	--	-------------------------------	---------------------------------	-------------------------



ELEV 469	<b>D</b>	TDZE 448
----------	----------	----------



CATEGORY	A	B	C	D	E
S-ILS 26*	648/24 200 (200-1/2)				
S-LOC 26	960/24	512 (500-1/2)	960/55	512 (500-1)	
<b>C</b> CIRCLING	1140-1	671 (700-1)	1400-2 3/4 931 (1000-2 3/4)	1400-3	931 (1000-3)

FORT SMITH, ARKANSAS  
Amdt 23 15JUN23

35°20'N-94°22'W

# ILS Z or LOC Z RWY 26

FORT SMITH RGNL (FSM)

SC-1, 20 FEB 2025 to 20 MAR 2025

SC-1, 20 FEB 2025 to 20 MAR 2025