

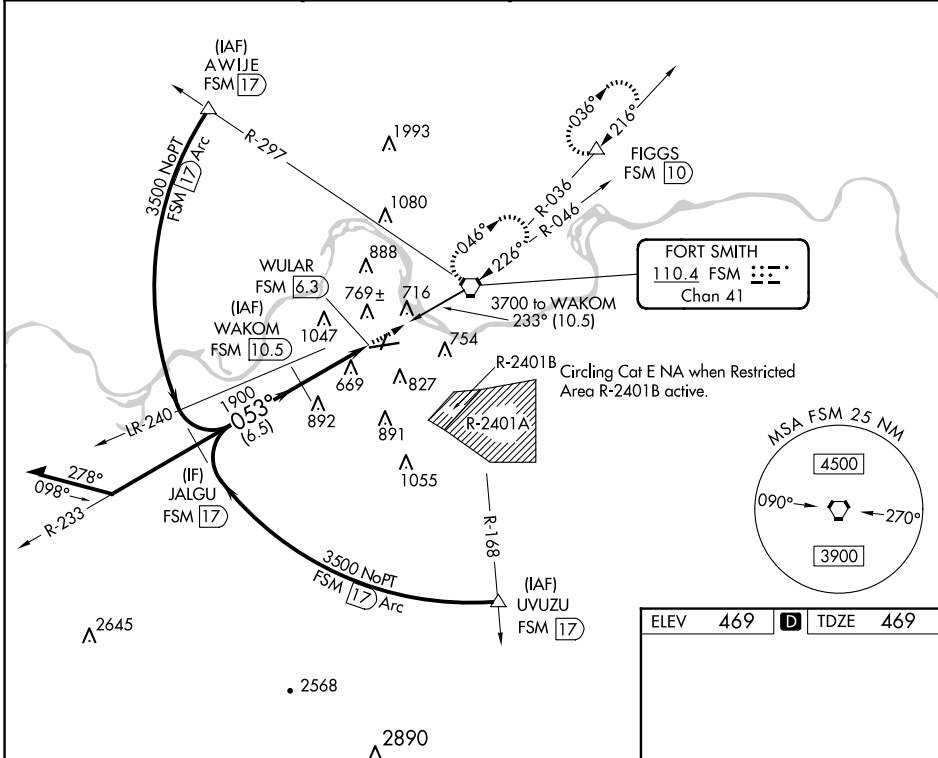
VORTAC FSM 110.4 Chan 41	APP CRS 053°	Rwy Idg TDZE 469 Apt Elev 469
--	------------------------	---

VOR Z or TACAN Z RWY 8

FORT SMITH RGNL (FSM)

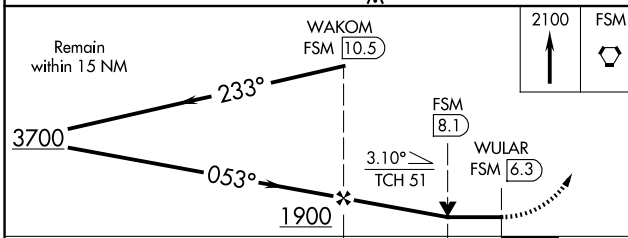
DME required.		MALSR	MISSED APPROACH: Climb to 2100 direct FSM VORTAC and hold, continue climb-in-hold to 3300. (TACAN aircraft climbing left turn to 4000 direct FSM VORTAC then on FSM VORTAC R-036 to FIGGS/10 DME and hold NE, RT, 216° inbound).
<p>⚠ Circling NA for Cat E northwest of Rwy 8 and of Rwy 20. Circling Rwy 20, 26 NA at night.</p> <p>ASR Rwy 8 helicopter visibility reduction below 3/4 SM NA. Inop table does not apply.</p>			

ATIS 124.775	RAZORBACK APP CON * 120.9 343.75	FORT SMITH TOWER * 118.3(CTAF) 323.175	GND CON 121.9 275.8	CLNC DEL 133.85 278.3	UNICOM 122.95
------------------------	--	--	-------------------------------	---------------------------------	-------------------------

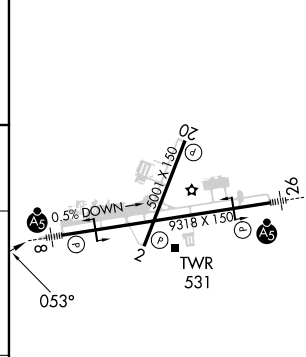


SC-1, 20 FEB 2025 to 20 MAR 2025

SC-1, 20 FEB 2025 to 20 MAR 2025



ELEV 469	TDZE 469
----------	----------



CATEGORY	A	B	C	D	E
S-8	1080-1	611 (700-1)	1080-1 3/4	611 (700-1 3/4)	
CIRCLING	1140-1	671 (700-1)	1400-2 3/4 931 (1000-2 3/4)	1400-3	931 (1000-3)

HIRL Rwy 8-26
MIRL Rwy 2-20