

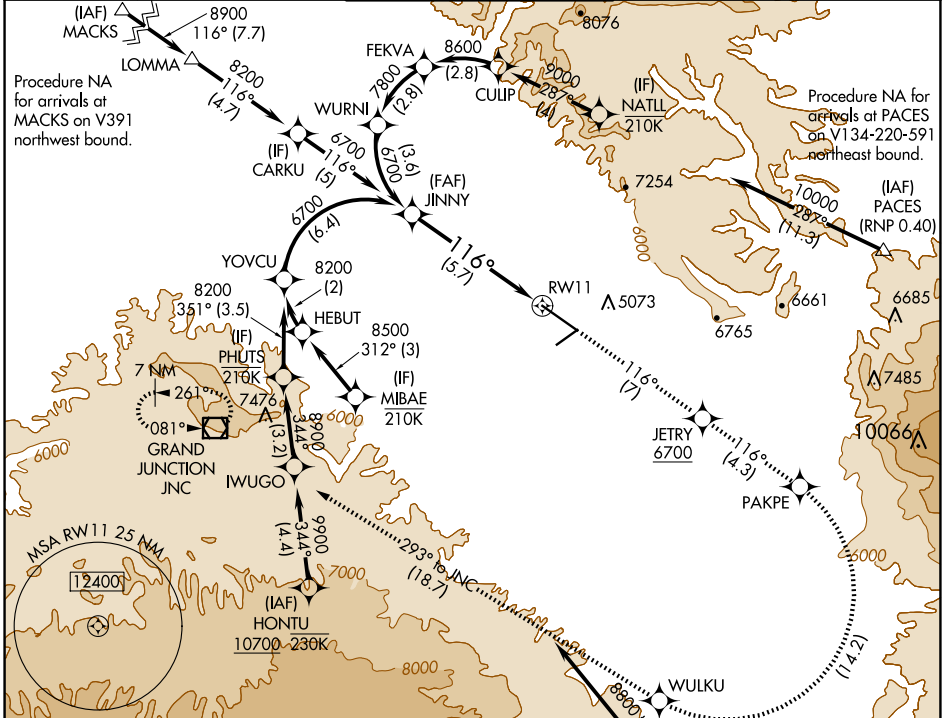
APP CRS 116°	Rwy Idg TDZE Apt Elev	9339 4840 4861
------------------------	-----------------------------	---

RNAV (RNP) Z RWY 11

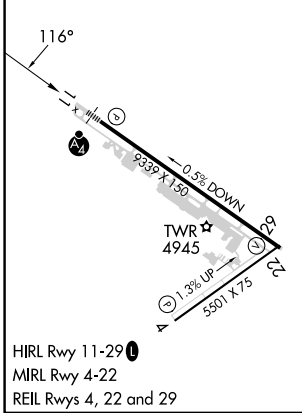
GRAND JUNCTION RGNL (GJT)

RNP AR APCH - GPS.	MALSF	MISSED APPROACH: Climb to 9000 on track 116° to JETRY, cross JETRY at or above 6700, and track 116° to PAKPE, right turn to WULKU, and track 293° to JNC VOR/DME and hold.
▼ For uncompensated Baro-VNAV systems, procedure NA below -17°C or above 54°C. For inoperative ALS, increase RNP 0.30 all Cats visibility to 1½ SM.		

ATIS 118.55	DENVER APP CON * 119.7 317.4	GRAND JUNCTION TOWER * 118.1 (CTAF) 257.8	GND CON 121.7 257.8	UNICOM 122.95
-----------------------	--	---	-------------------------------	-------------------------



ELEV 4861	D	TDZE 4840
-----------	----------	-----------



HIRL Rwy 11-29
MIRL Rwy 4-22
REIL Rwy 4, 22 and 29

	JINNY 6700	9000 ↑ tr 116°	JETRY 6700	tr 116°	PAKPE	WULKU	JNC tr 293°	
	6700	See planview for multiple IF locations.						
	GP 3.00° TCH 50	RW11						
		5.7 NM						
CATEGORY	A	B	C	D				
RNP 0.10 DA		5183/40	343 (400-¾)					
RNP 0.30 DA		5346-1¼	506 (500-1¼)					

AUTHORIZATION REQUIRED

SW-1, 20 FEB 2025 to 20 MAR 2025

SW-1, 20 FEB 2025 to 20 MAR 2025