

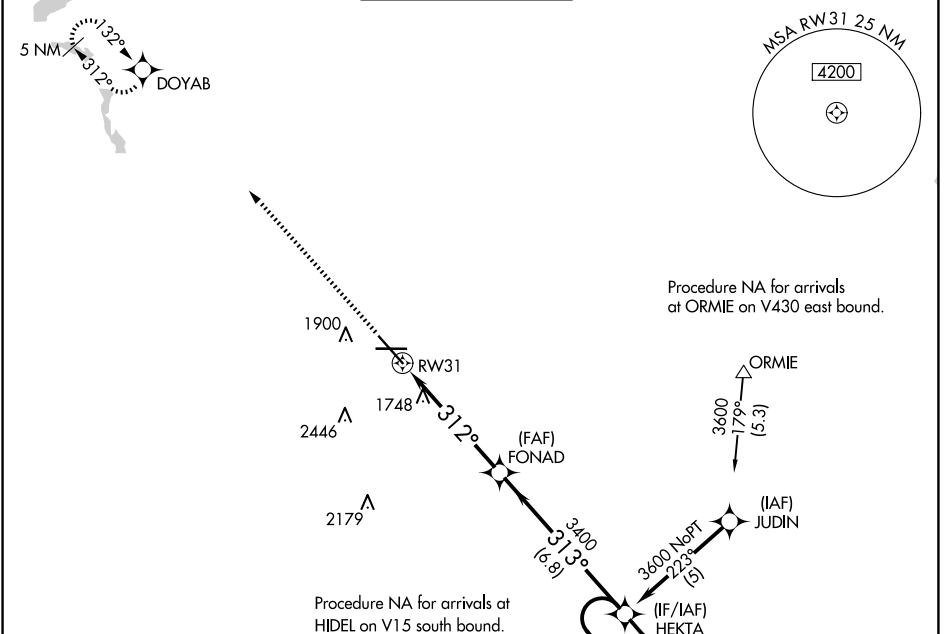
WAAS CH 66099 W31A	APP CRS 312°	Rwy Idg TDZE Apt Elev	7700 1679 1716
--	------------------------	-----------------------------	---

RNAV (GPS) RWY 31

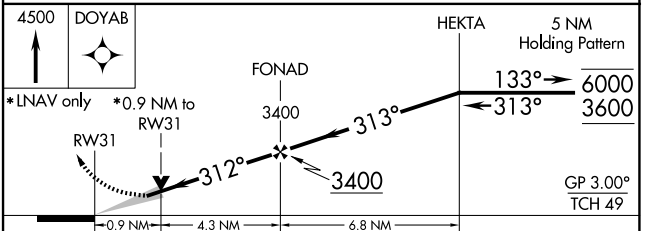
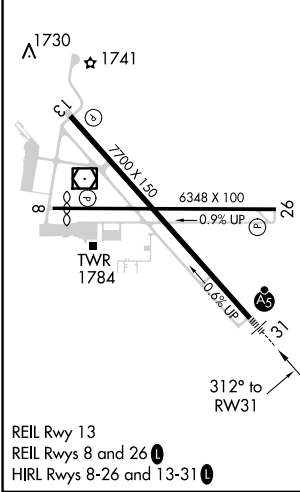
MINOT INTL (MOT)

RNP APCH.	MALSR	MISSED APPROACH: Climb to 4500 direct DOYAB and hold.
<p>V For uncompensated Baro-VNAV systems, LNAV/VNAV NA below -18°C or above 54°C. For inop ALS increase LNAV/VNAV visibility to RVR 4500.</p>		

ASOS 118.725	MINOT APP CON * 119.6 363.8	MAGIC CITY TOWER * 118.2(CTAF) 251.125	GND CON 121.9	UNICOM 122.95
------------------------	---------------------------------------	--	-------------------------	-------------------------



ELEV 1716	D	TDZE 1679
-----------	----------	-----------



CATEGORY	A	B	C	D
LPV DA	1929/24 250 (300-½)			
LNAV/VNAV DA	1966/24 287 (300-½)			1966/40 287 (300-¾)
LNAV MDA	2000/24	321 (300-½)	2000/26 321 (300-½)	2000/50 321 (300-1)
CIRCLING	2200-1 484 (500-1)	2240-1 524 (600-1)	2800-3 1084 (1100-3)	

NC-1, 20 FEB 2025 to 20 MAR 2025

NC-1, 20 FEB 2025 to 20 MAR 2025