

LOC I-CAK 109.5	APP CRS 009°	Rwy Idg 7007
		TDZE 1209
		Apt Elev 1226

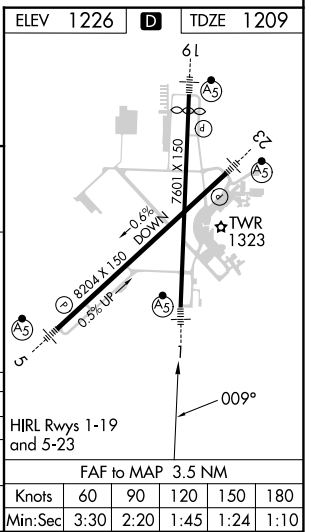
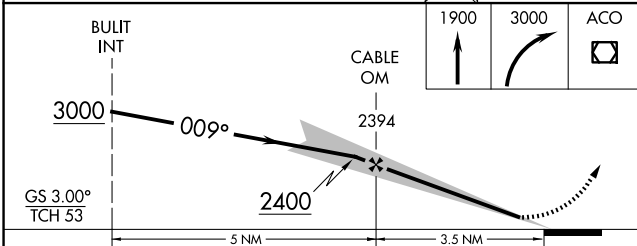
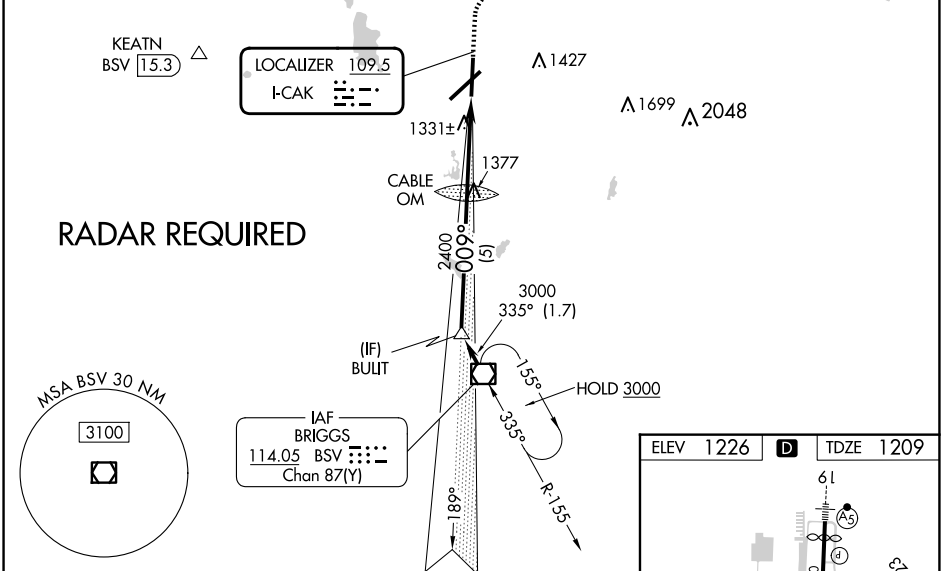
ILS or LOC RWY 1

AKRON-CANTON RGNL (CAK)

MALSRR  MISSED APPROACH: Climb to 1900 then climbing right turn to 3000 direct ACO VOR/DME and hold.

ATIS 121.05	CLEVELAND APP CON* 125.5 269.25	AKRON-CANTON TOWER 134.75 279.575	GND CON 121.7 348.6	CLNC DEL 132.05
-----------------------	---	---	-------------------------------	---------------------------

ALTERNATE MISSED APCH FIX  MISSED APCH FIX 



CATEGORY	A	B	C	D
S-ILS 1 **	1409/24		200 (200-½)	
S-LOC 1	1600/24 391 (400-½)		1600/40 391 (400-¾)	
CIRCLING	1760-1 534 (600-1)	1780-1½ 554 (600-1½)	1800-2 574 (600-2)	

HIRL Rwy 1-19 and 5-23

FAF to MAP 3.5 NM

Knots	60	90	120	150	180
Min:Sec	3:30	2:20	1:45	1:24	1:10

EC-2, 20 FEB 2025 to 20 MAR 2025

EC-2, 20 FEB 2025 to 20 MAR 2025