

WAAS CH <b>90220</b> <b>W23A</b>	APP CRS <b>235°</b>	Rwy Idg TDZE Apt Elev	<b>8204</b> <b>1226</b> <b>1226</b>
--	------------------------	-----------------------------	---

# RNAV (GPS) RWY 23

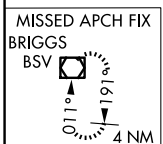
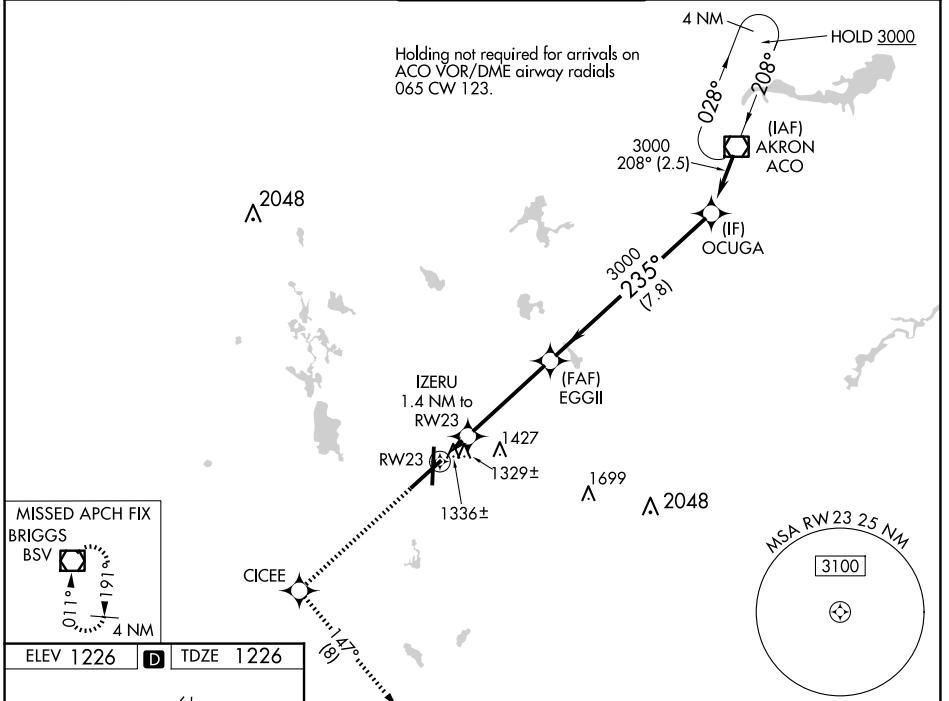
AKRON-CANTON RGNL (CAK)

**▼** For uncompensated Baro-VNAV systems, LNAV/VNAV NA below -17°C (2°F) or above 46°C (114°F). DME/DME RNP-0.3 NA. For inoperative MALS, increase LNAV Cat D visibility to RVR 6000.  
 \*\* RVR 1800 authorized with use of FD or AP or HUD to DA.

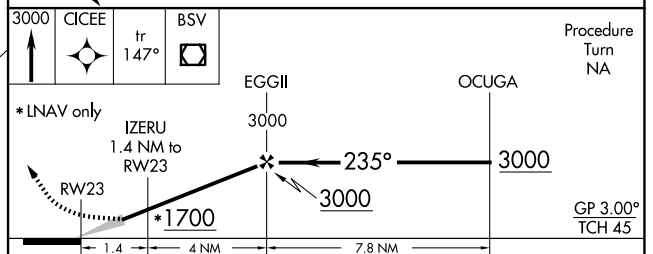
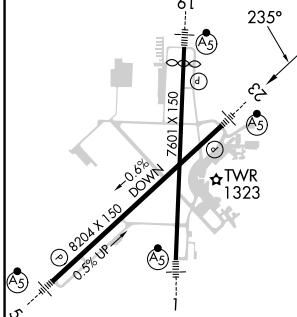


**MISSED APPROACH:** Climb to 3000 direct CICEE and on track 147° to BSV VOR/DME and hold.

ATIS <b>121.05</b>	CLEVELAND APP CON* <b>125.5 269.25</b>	AKRON-CANTON TOWER <b>134.75 279.575</b>	GND CON <b>121.7 348.6</b>	CLNC DEL <b>132.05</b>
-----------------------	---	---	-------------------------------	---------------------------



ELEV 1226	<b>D</b>	TDZE 1226
-----------	----------	-----------



CATEGORY	A	B	C	D
LPV DA**		1426/24	200 (200-½)	
LNAV/VNAV DA		1691/60	465 (500-1¼)	
LNAV MDA	1640/24	414 (500-½)	1640/40 414 (500-¾)	1640/50 414 (500-1)
CIRCLING	1760-1	534 (600-1)	1780-1½ 554 (600-1½)	1800-2 574 (600-2)

EC-2, 20 FEB 2025 to 20 MAR 2025

EC-2, 20 FEB 2025 to 20 MAR 2025