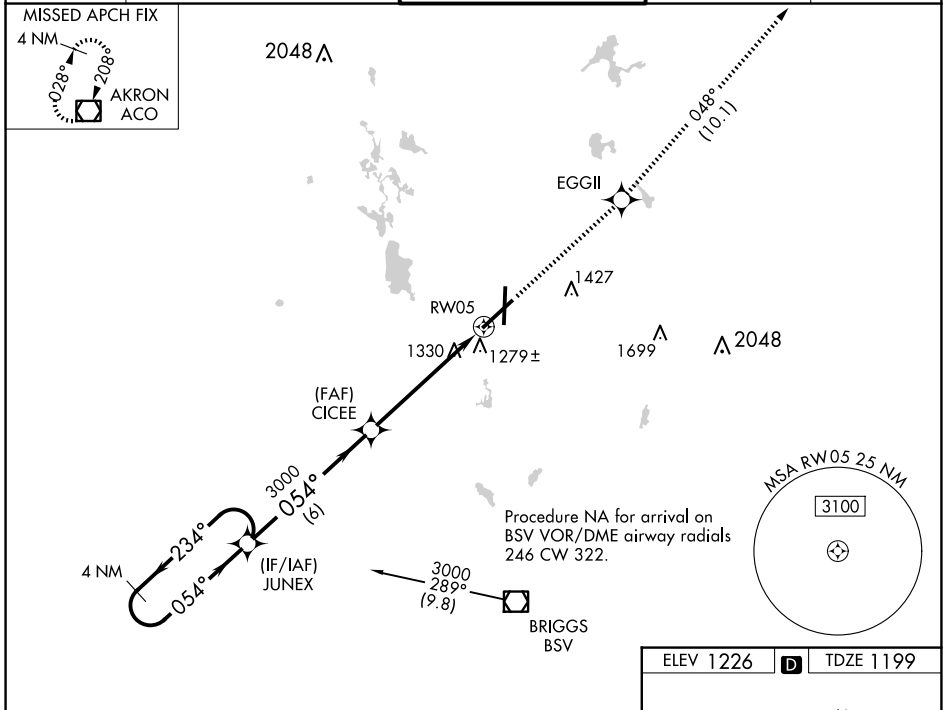


WAAS CH 77620 W05A	APP CRS 054°	Rwy Idg TDZE Apt Elev	8204 1199 1226
--	------------------------	-----------------------------	---

RNAV (GPS) RWY 5

AKRON-CANTON RGNL (CAK)

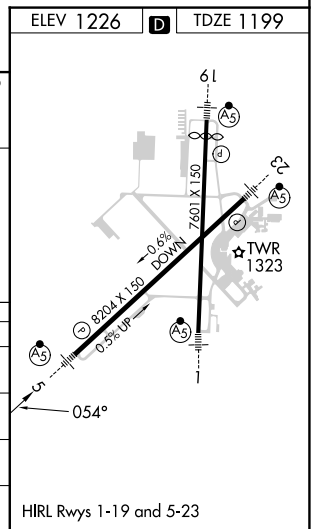
<p>▼ For uncompensated Baro-VNAV systems, LNAV/VNAV NA below -17°C (2°F) or above 46°C (114°F). DME/DME RNP-0.3 NA. ** RVR 1800 authorized with use of FD or AP or HUD to DA.</p>		<p>MALSR</p>	<p>MISSED APPROACH: Climb to 3000 direct EGGII and on track 048° to ACO VOR/DME and hold.</p>	
<p>ATIS 121.05</p>	<p>CLEVELAND APP CON * 125.5 269.25</p>	<p>AKRON-CANTON TOWER 134.75 279.575</p>	<p>GND CON 121.7 348.6</p>	<p>CLNC DEL 132.05</p>



EC-2, 20 FEB 2025 to 20 MAR 2025

EC-2, 20 FEB 2025 to 20 MAR 2025

<p>4 NM Holding Pattern</p>	<p>JUNEX</p>		<p>CICEE</p>		<p>3000 EGGII</p>	<p>tr 048°</p>	<p>ACO</p>
	<p>← 234° →</p> <p>← 054° →</p>		<p>← 054° →</p>		<p>* 1.3 NM to RW05</p>		<p>* LNAV only</p>
<p>6 NM</p>		<p>4.2 NM</p>		<p>1.3 NM</p>		<p>RW05</p>	
CATEGORY	A	B	C	D			
LPV DA**	1399/24		200 (200-½)				
LNAV/VNAV DA	1577/50		378 (400-1)				
LNAV MDA	1640/24	441 (500-½)	1640/40 441 (500-¾)	1640/50 441 (500-1)			
CIRCLING	1760-1	534 (600-1)	1780-1½ 554 (600-1½)	1800-2 574 (600-2)			



HIRL Rwy 1-19 and 5-23