


LOC I-FFV	APP CRS	Rwy Idg	7540
111.3	139°	TDZE	23
		Apt Elev	30

ILS or LOC RWY 14

SARASOTA/BRADENTON INTL (SRQ)

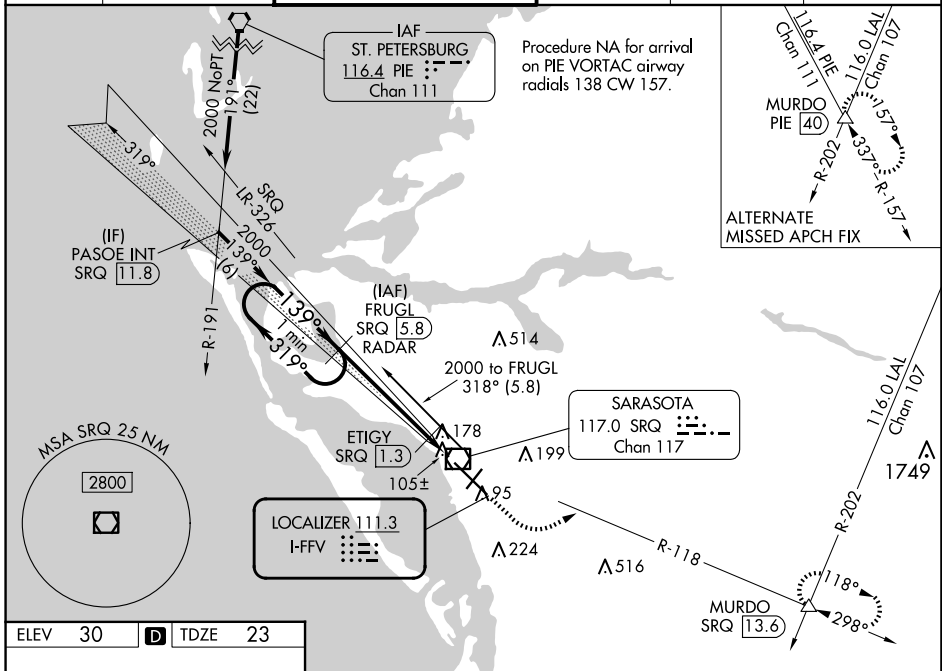
DME or RADAR required for LOC only.

⚠ When control tower closed, S-ILS 14 Minimums NA; increase S-LOC 14 Cats A and B and ETIGY Fix Minimums S-LOC 14 all Cats visibility to 1 mile. When control tower closed, inop table does not apply to S-LOC 14 Cats A and B and ETIGY Fix Minimums S-LOC 14 all Cats.

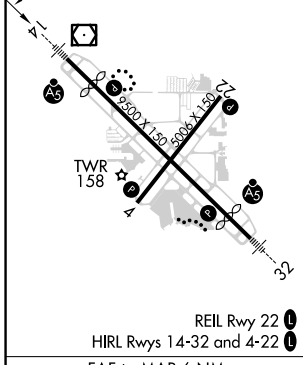
MALSR


MISSED APPROACH: Climb to 1000 then climbing left turn to 2000 on SRQ VOR/DME R-118 to MURDO INT/SRQ 13.6 DME and hold.

ATIS 124.375	TAMPA APP CON 119.65 353.575	SARASOTA TOWER ★ 120.1(CTAF) 0 256.8	GND CON 121.9 273.6	CLNC DEL 118.25	UNICOM 122.95
------------------------	--	--	-------------------------------	---------------------------	-------------------------



ELEV 30	D	TDZE 23
---------	----------	---------



One Minute Holding Pattern

FRUGL SRQ 5.8 RADAR

1000
2000
SRQ R-118

MURDO

*LOC only.

CATEGORY	A	B	C	D
S-ILS 14	223-½ 200 (200-½)			
S-LOC 14	500-½	477 (500-½)	500-1	477 (500-1)
CIRCLING	500-1	470 (500-1)	600-1½ 570 (600-1½)	600-2 570 (600-2)
ETIGY FIX MINIMUMS				
S-LOC 14	360-½ 337 (400-½)			
CIRCLING	500-1	470 (500-1)	600-1½ 570 (600-1½)	600-2 570 (600-2)

FAF to MAP 6 NM

Knots	60	90	120	150	180
Min:Sec	6:00	4:00	3:00	2:24	2:00

SE-3, 20 FEB 2025 to 20 MAR 2025

SE-3, 20 FEB 2025 to 20 MAR 2025