

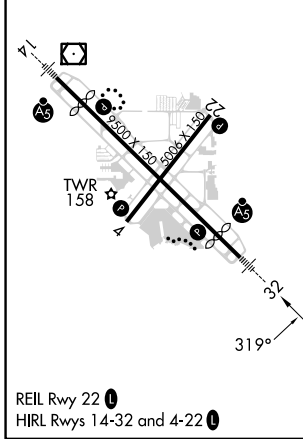
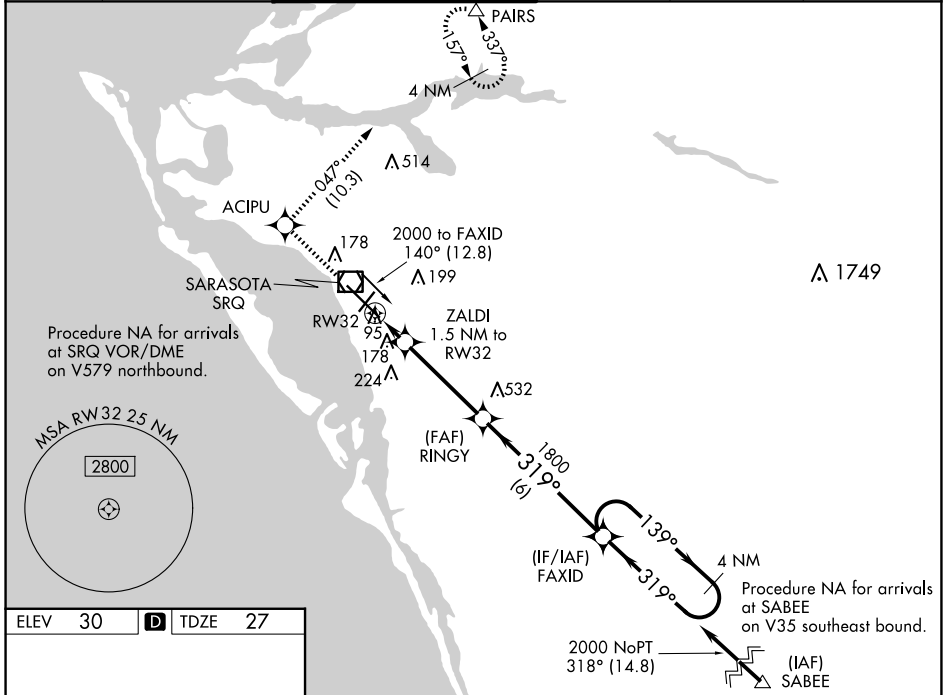
WAAS CH 72605	APP CRS 319°	Rwy Idg TDZE Apt Elev	7510 27 30
-------------------------	------------------------	-----------------------------	---------------------------------------

RNAV (GPS) RWY 32

SARASOTA/BRADENTON INTL (SRQ)

RNP APCH.	<p>▼ For uncompensated Baro-VNAV systems, LNAV/VNAV NA below -15°C or above 43°C. When control tower closed, LPV and LNAV/VNAV NA; increase LNAV all Cats visibility to 1 mile. When control tower closed, inop table does not apply to LNAV Cats A and B. When control tower closed, for inop MALSRL, increase LNAV Cat C and D visibility to 1½ mile.</p>	MALSRL 	MISSED APPROACH: Climb to 3000 direct ACIPU and on track 047° to PAIRS and hold, continue climb-in-hold to 3000.
-----------	---	------------	--

ATIS 124.375	TAMPA APP CON 119.65 353.575	SARASOTA TOWER ★ 120.1(CTAF) 256.8	GND CON 121.9 273.6	CLNC DEL 118.25	UNICOM 122.95
------------------------	--	--	-------------------------------	---------------------------	-------------------------



3000	ACIPU	tr 047°	PAIRS	FAXID	4 NM Holding Pattern
*LNAV only.					
RW32		ZALDI 1.5 NM to RW32	RINGY 1800	139° → 2000	
1.5 NM		3.9 NM	6 NM	GP 3.00° TCH 53	
CATEGORY	A	B	C	D	
LPV DA	227-½		200 (200-½)		
LNAV/DA VNAV	463-1		436 (500-1)		
LNAV MDA	440-½	413 (500-½)	440-¾	413 (500-¾)	
CIRCLING	500-1	470 (500-1)	600-1½	600-2	
			570 (600-1½)	570 (600-2)	

SE-3, 20 FEB 2025 to 20 MAR 2025

SE-3, 20 FEB 2025 to 20 MAR 2025