


(SRQ5.SRQ) 24081


AL-640 (FAA)

SARASOTA FIVE DEPARTURE


SARASOTA/BRADENTON INTL (SRQ)
SARASOTA (BRADENTON), FLORIDA


SEMINOLE
117.5 SZW 
Chan 122


**TOP ALTITUDE:
3000**


TAYLOR
112.9 TAY 
Chan 76

ATIS
124.375
CLNC DEL
118.25
GND CON
121.9 273.6
SARASOTA TOWER ★
120.1 (CTAF) 256.8
TAMPA DEP CON
119.65 353.575


CROSS CITY
112.0 CTY 
Chan 57


GATORS
116.2 GNV 
Chan 109

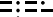
ST PETERSBURG
116.4 PIE 
Chan 111

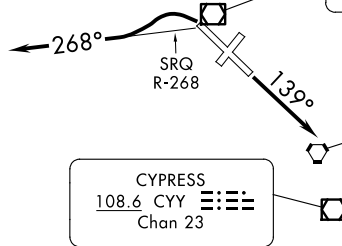
LAKELAND
116.0 LAL 
Chan 107

ORLANDO
112.2 ORL 
Chan 59

SARASOTA
117.0 SRQ 
Chan 117

LEE COUNTY
114.15 RSW 
Chan 88(Y)

CYPRESS
108.6 CYY 
Chan 23



TAKEOFF MINIMUMS

Rwys 4, 22: NA-ATC.

Rwy 14: Standard.

Rwy 32: Standard with ATC climb of 500' per NM to 540.

Rwy 32: Turbojet aircraft do not turn prior to departure end of Rwy.

NOTE: RADAR required.

NOTE: Chart not scale.



DEPARTURE ROUTE DESCRIPTION

TAKEOFF RUNWAY 14: Climb heading 139°. Expect RADAR vectors to join assigned route, thence. . . .

TAKEOFF RUNWAY 32: Climbing left turn to intercept SRQ R-268 westbound or as assigned by ATC. Expect RADAR vectors to join assigned route, thence. . . .

. . . .maintain 3000 or as assigned by ATC. Expect clearance to filed altitude ten minutes after departure.

SARASOTA FIVE DEPARTURE
(SRQ5.SRQ) 15SEP16

SARASOTA (BRADENTON), FLORIDA
SARASOTA/BRADENTON INTL (SRQ)

SE-3, 20 FEB 2025 to 20 MAR 2025

SE-3, 20 FEB 2025 to 20 MAR 2025