

(TIDES1.TIDES) 24137

TIDES ONE DEPARTURE (RNAV)

AL-640 (FAA)

SARASOTA/BRADENTON INTL(SRQ)

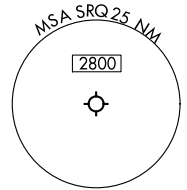
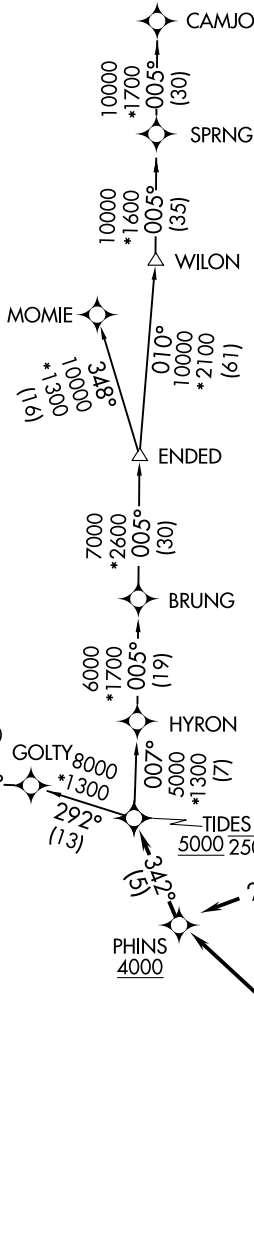
SARASOTA/BRADENTON, FLORIDA

TAMPA DEP CON
 119.65 353.575
 ATIS
 124.375
 CLNC DEL
 118.25
 GND CON
 121.9 273.6
 SARASOTA TOWER *
 120.1 (CTAF) 256.8

RNAV 1 - DME/DME/IRU or GPS. From PSTOL - GPS.

RADAR required for non-GPS equipped aircraft.

**TOP ALTITUDE:
5000**



TAKEOFF MINIMUMS

Rwys 4, 14, 22: Standard.
 Rwy 32: Standard with minimum
 climb of 500'/NM to 530.

NOTE: Jet aircraft only.

SE-3, 20 FEB 2025 to 20 MAR 2025

SE-3, 20 FEB 2025 to 20 MAR 2025

TIDES ONE DEPARTURE (RNAV)

(TIDES1.TIDES) 16MAY24

SARASOTA/BRADENTON, FLORIDA
 SARASOTA/BRADENTON INTL (SRQ)



DEPARTURE ROUTE DESCRIPTION

TAKEOFF RUNWAY 4: Climb on heading 043° to 530, then on heading 043° or as assigned by ATC, for RADAR vectors to PHINS, thence. . . .

TAKEOFF RUNWAY 14: Climb on heading 139° to 530, then direct URCHN to cross at or above 4000, then on track 229° to cross SNAGS at or above 4000 and at or below 220K, then on track 265° to THONG, then on track 318° to cross PHINS at or above 4000, thence. . . .

TAKEOFF RUNWAY 22: Climb on heading 223° to 530, then on heading 223° or as assigned by ATC, for RADAR vectors to PHINS, thence. . . .

TAKEOFF RUNWAY 32: Climb on heading 319° to 530, then left turn direct AQUAE to cross at 2600 and at or below 220K, then on track 254° to cross PHINS at or above 4000, thence. . . .

. . . .on track 342° to cross TIDES at or above 5000 and at or below 250K, maintain 5000. Expect clearance to filed altitude within 10 minutes after departure.

CAMJO TRANSITION (TIDES1.CAMJO)

CIGAR TRANSITION (TIDES1.CIGAR)

FROOT TRANSITION (TIDES1.FROOT)

MOMIE TRANSITION (TIDES1.MOMIE)

SE-3, 20 FEB 2025 to 20 MAR 2025

SE-3, 20 FEB 2025 to 20 MAR 2025