

WAAS CH 56340 W17A	APP CRS 173°	Rwy ldg 5500 TDZE 1302 Apt Elev 1302
--	------------------------	---

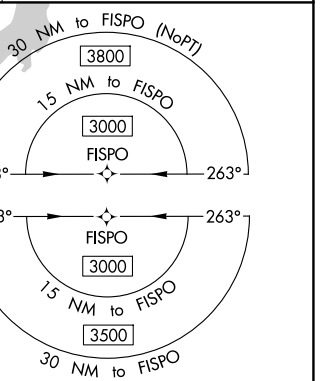
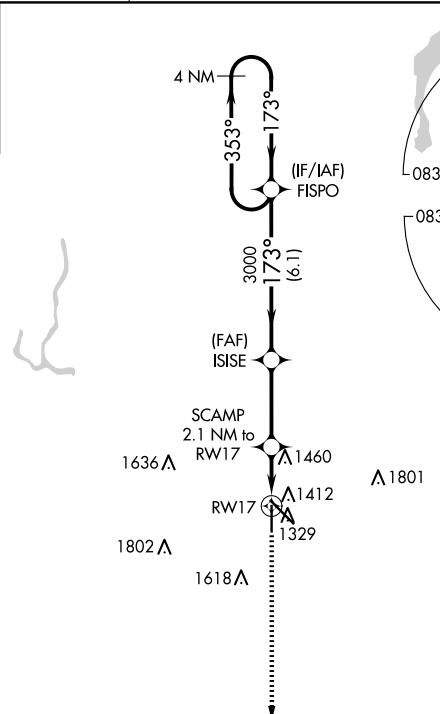
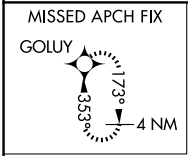
RNAV (GPS) RWY 17

ABERDEEN RGNL (ABR)

⚠ For uncompensated Baro-VNAV systems, LNAV/VNAV NA below -22°C (-7°F) or above 54°C (130°F).
⚠ DME/DME RNP-0.3 NA.

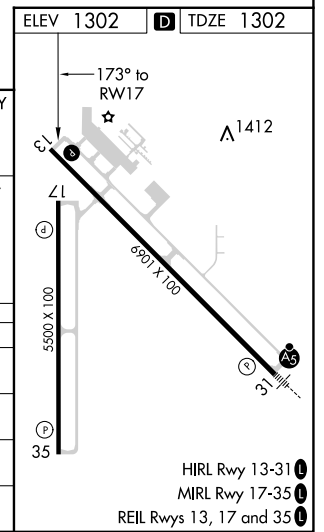
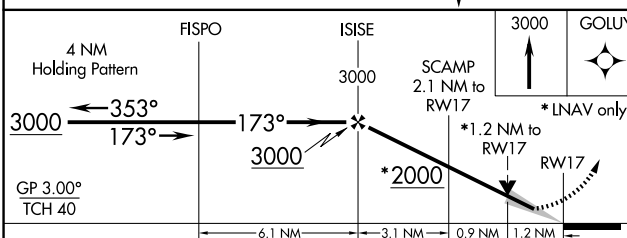
MISSED APPROACH: Climb to 3000 direct GOLUY and hold.

ASOS 125.875	MINNEAPOLIS CENTER 120.6 371.9	UNICOM 122.7 (CTAF) 0
------------------------	--	---------------------------------



NC-1, 20 FEB 2025 to 20 MAR 2025

NC-1, 20 FEB 2025 to 20 MAR 2025



CATEGORY	A	B	C	D
LPV DA		1502-3/4	200 (200-3/4)	
LNAV/VNAV DA		1624-1 1/8	322 (400-1 1/8)	
LNAV MDA	1720-1	418 (500-1)	1720-1 1/8	418 (500-1 1/8)
C CIRCLING	1760-1 458 (500-1)	1860-1 558 (600-1)	1960-1 3/4 658 (700-1 3/4)	2160-2 3/4 858 (900-2 3/4)