

VOR/DME ABR <b>113.0</b> Chan <b>77</b>	APP CRS <b>125°</b>	Rwy Idg TDZE Apt Elev	<b>6901</b> <b>1302</b> <b>1302</b>
---	------------------------	-----------------------------	---

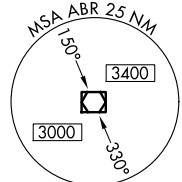
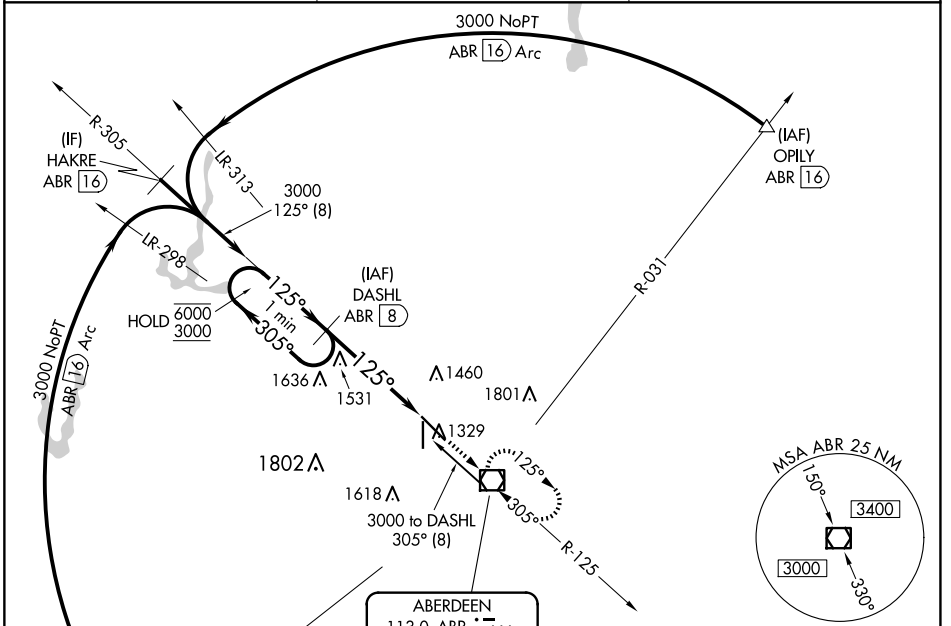
# VOR RWY 13

ABERDEEN RGNL (ABR)

DME required.

MISSED APPROACH: Climb to 3000 direct ABR VOR/DME and hold.

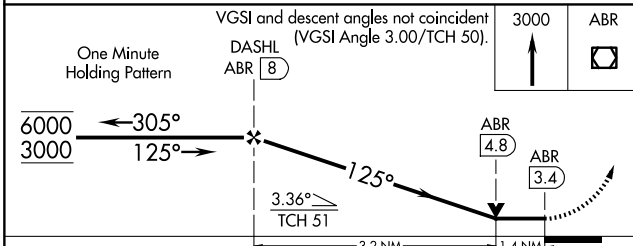
ASOS <b>125.875</b>	MINNEAPOLIS CENTER <b>120.6 371.9</b>	UNICOM <b>122.7 (CTAF)</b>
------------------------	--	-------------------------------



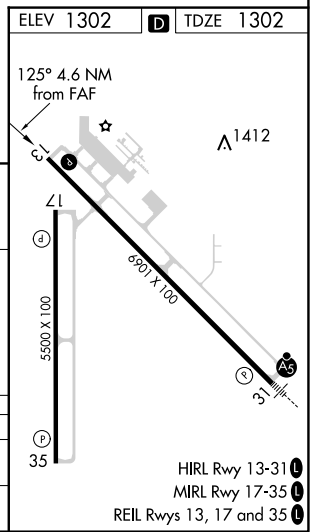
**ABERDEEN**  
113.0 ABR  
Chan 77

Procedure NA for arrival on ABR VOR/DME  
airway radials 256 CW 345.

ELEV 1302	TDZE 1302
-----------	-----------



CATEGORY	A	B	C	D
S-13	1800-1	498 (500-1)	1800-1 <sup>3</sup> / <sub>8</sub>	498 (500-1 <sup>3</sup> / <sub>8</sub> )
CIRCLING	1800-1 498 (500-1)	1860-1 558 (600-1)	1960-1 <sup>3</sup> / <sub>4</sub> 658 (700-1 <sup>3</sup> / <sub>4</sub> )	2160-2 <sup>3</sup> / <sub>4</sub> 858 (900-2 <sup>3</sup> / <sub>4</sub> )



NC-1, 20 FEB 2025 to 20 MAR 2025

NC-1, 20 FEB 2025 to 20 MAR 2025