


WAAS CH 45599 W17A	APP CRS 176°	Rwy Idg 5500 TDZE 207 Apt Elev 208
--	------------------------	---

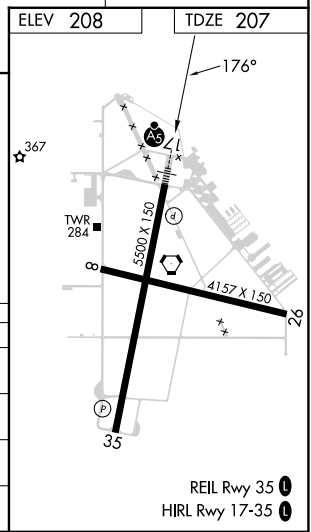
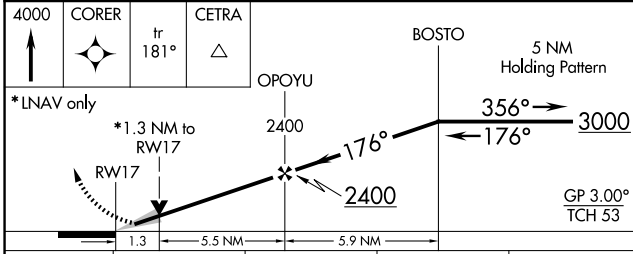
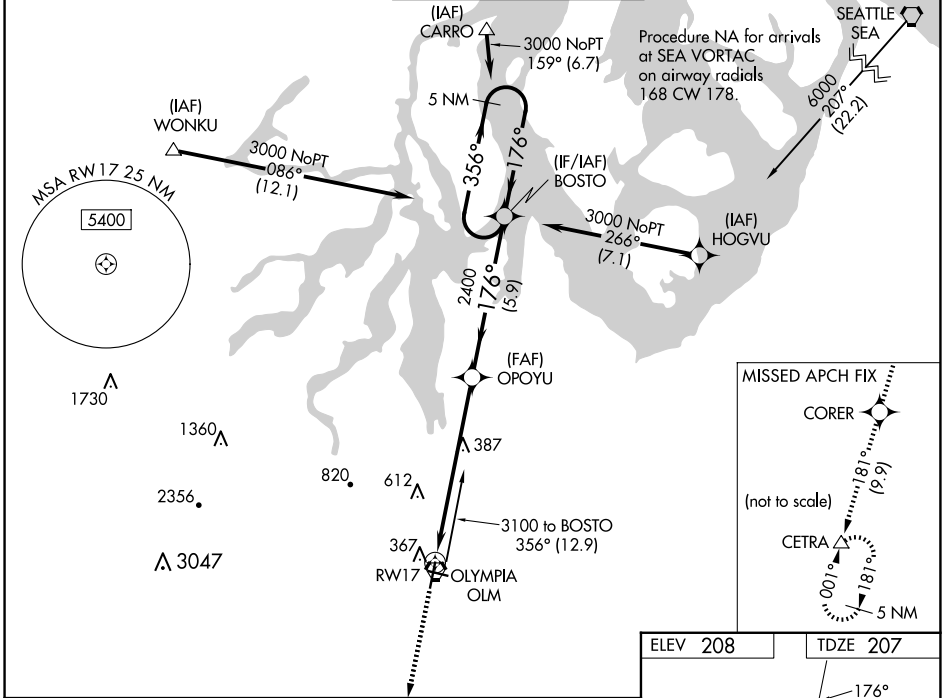
RNAV (GPS) RWY 17

OLYMPIA RGNL (OLM)

⚠ For uncompensated Baro-VNAV systems, LNAV/VNAV NA below -9°C (16°F) or above 54°C (130°F). DME/DME RNP-0.3 NA.
⚠ For inop ALS; increase LNAV/VNAV visibility all Cats to 1½ SM.
 Increase LNAV Cats C/D to 1¾ SM.

MALSR

MISSED APPROACH: Climb to 4000 direct CORER and on track 181° to CETRA and hold, continue climb-in-hold to 4000.

ATIS 135.725	SEATTLE APP CON 121.1 290.9	OLYMPIA TOWER * 124.4 (CTAF) 254.25	GND CON 121.6	UNICOM 122.95
------------------------	---------------------------------------	---	-------------------------	-------------------------



CATEGORY	A	B	C	D
LPV DA		407-½	200 (200-½)	
LNAV/VNAV DA		629-¾	422 (500-¾)	
LNAV MDA	680-½	473 (500-½)	680-1	473 (500-1)
CIRCLING	720-1	860-1	1020-2½	1020-2¾
	512 (600-1)	652 (700-1)	812 (900-2½)	812 (900-2¾)

NW-1, 20 FEB 2025 to 20 MAR 2025

NW-1, 20 FEB 2025 to 20 MAR 2025