

VORTAC OLM <b>113.4</b> Chan <b>81</b>	APP CRS <b>356°</b>	Rwy Idg TDZE <b>208</b> Apt Elev <b>208</b>
--	------------------------	---

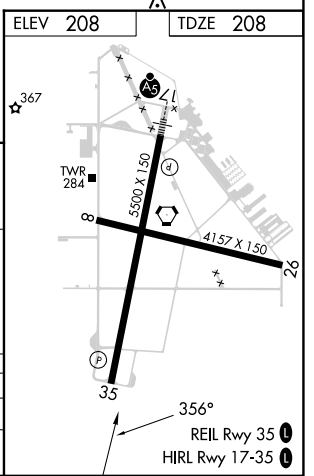
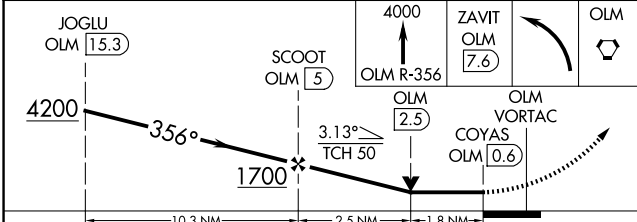
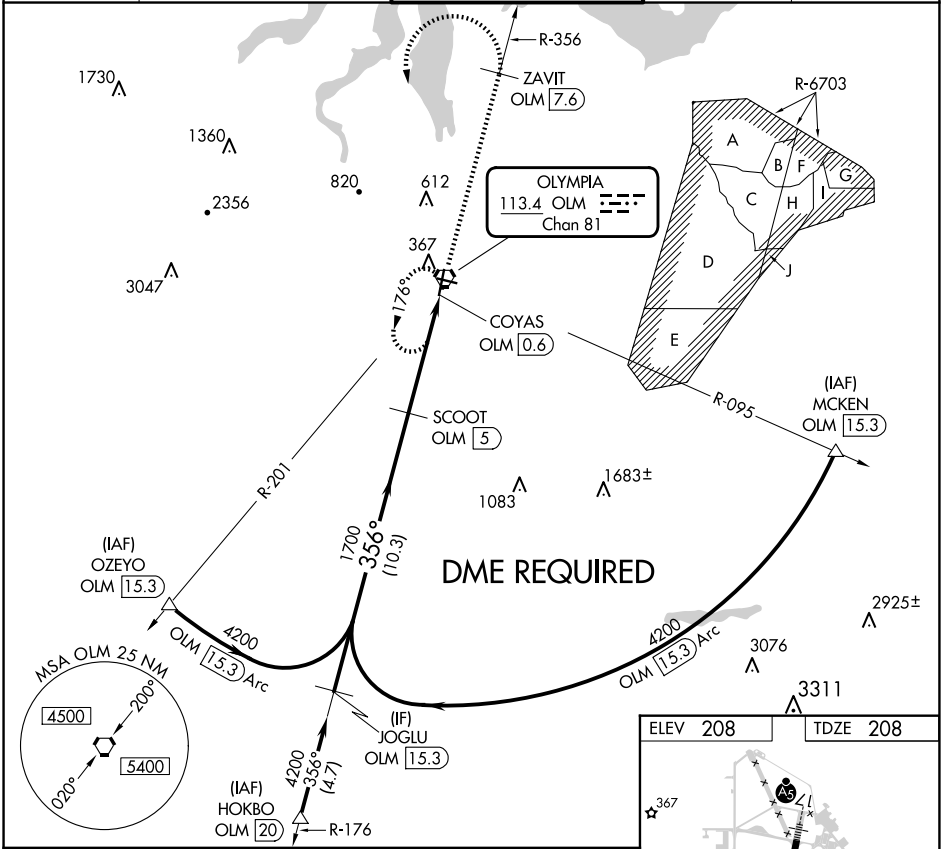
# VOR RWY 35

OLYMPIA RGNL (OLM)

**▼** Rwy 35 helicopter visibility reduction below 3/4 SM NA.  
**▲** DME required.

MISSED APPROACH: Climb to 4000 on OLM VORTAC R-356 to ZAVIT/OLM 7.6 DME then climbing left turn direct OLM VORTAC and hold.

ATIS <b>135.725</b>	SEATTLE APP CON <b>121.1 290.9</b>	OLYMPIA TOWER* <b>124.4</b> (CTAF) <b>254.25</b>	GND CON <b>121.6</b>	UNICOM <b>122.95</b>
------------------------	---------------------------------------	---	-------------------------	-------------------------



CATEGORY	A	B	C	D
S-35	840-1	632 (700-1)	840-1 3/4	632 (700-1 3/4)
<b>C</b> CIRCLING	840-1 632 (700-1)	860-1 652 (700-1)	1020-2 1/2 812 (900-2 1/2)	1020-2 3/4 812 (900-2 3/4)

NW-1, 20 FEB 2025 to 20 MAR 2025

NW-1, 20 FEB 2025 to 20 MAR 2025