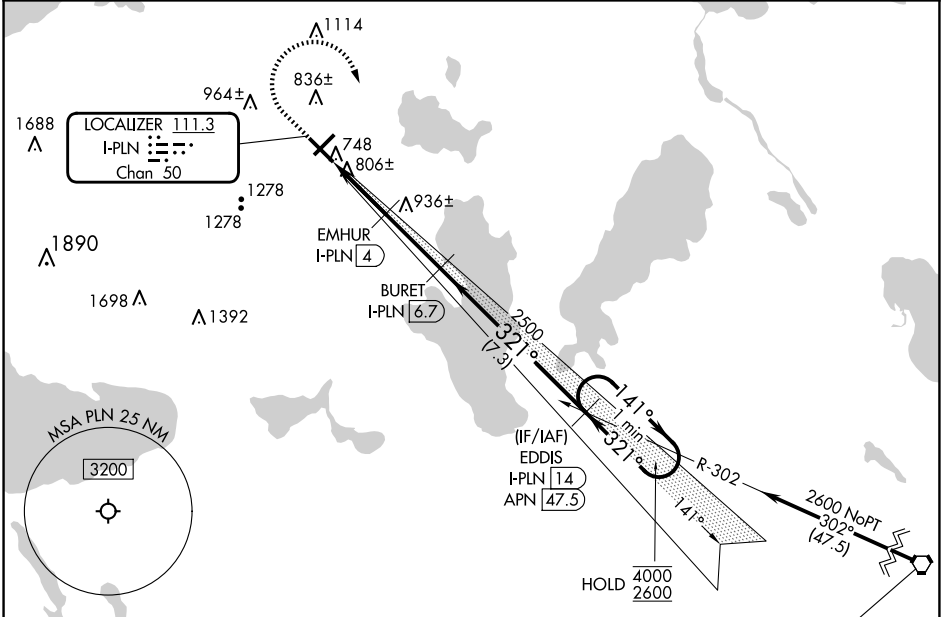


LOC/DME I-PLN 111.3 Chan 50	APP CRS 321°	Rwy Idg 6513 TDZE 712 Apt Elev 721
---	------------------------	---

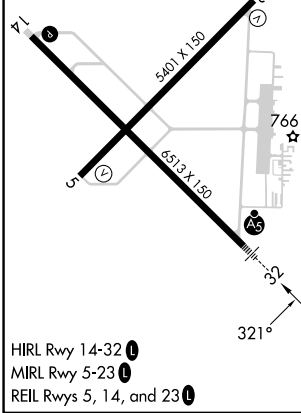
ILS or LOC RWY 32

PELLSTON RGNL/EMMET COUNTY (PLN)

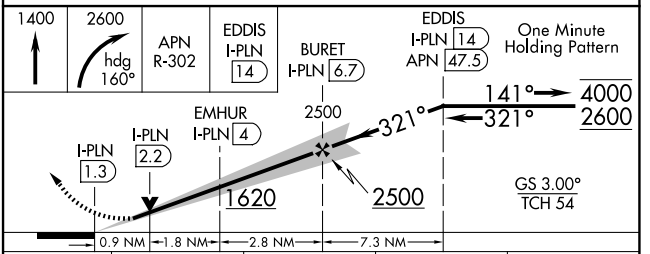
DME required.	MALSR AS	MISSED APPROACH: Climb to 1400 then climbing right turn to 2600 on heading 160° and APN VORTAC R-302 to EDDIS/I-PLN 14 DME and hold.
ASOS 119.025	MINNEAPOLIS CENTER 134.6 354.05	UNICOM 123.0 (CTAF) 0



ELEV 721	D	TDZE 712
----------	----------	----------



HIRL Rwy 14-32
MIRL Rwy 5-23
REIL Rwy 5, 14, and 23



CATEGORY	A	B	C	D
S-ILS 32	912-1/2		200 (200-1/2)	
S-LOC 32	1060-1/2	348 (400-1/2)	1060-5/8	348 (400-5/8)
CIRCLING	1280-1 559 (600-1)	1320-1 599 (600-1)	1560-2 1/2 839 (900-2 1/2)	1660-3 939 (1000-3)

EC-1, 20 FEB 2025 to 20 MAR 2025

EC-1, 20 FEB 2025 to 20 MAR 2025