

SAGINAW, MICHIGAN

AL-648 (FAA)

24249

LOC/DME I-TQR <b>108.7</b> Chan 24	APP CRS <b>233°</b>	Rwy Idg <b>8002</b> TDZE <b>661</b> Apt Elev <b>668</b>
--	------------------------	---

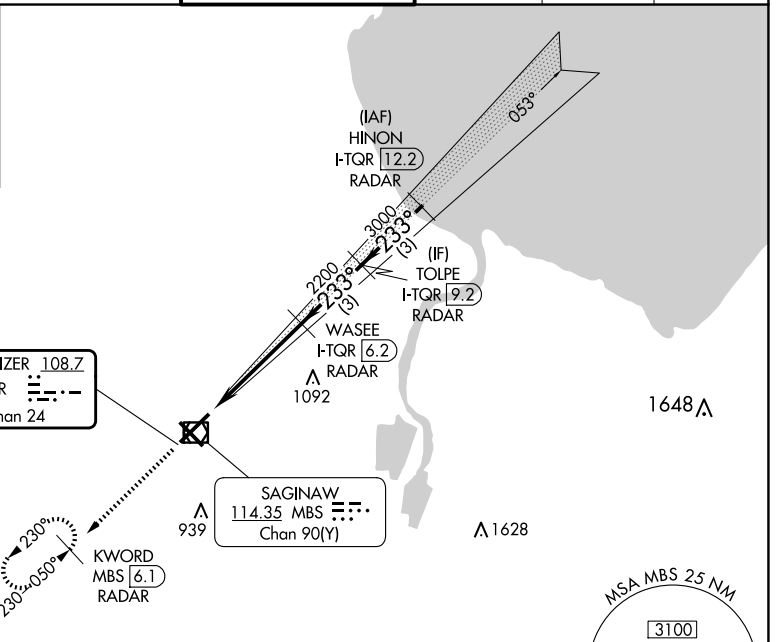
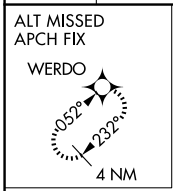
# ILS or LOC RWY 23

MBS INTL (MBS)

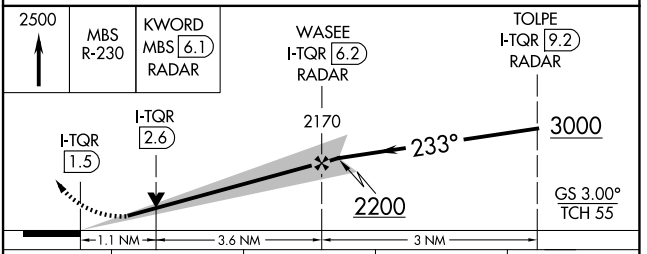
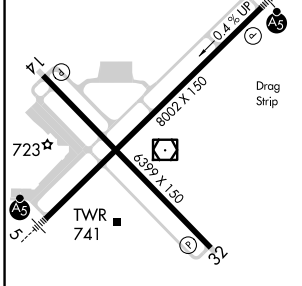
DME or RADAR required. RADAR required for procedure entry.  
 \*RVR 1800 authorized with use of FD or AP or HUD to DA.

MALS R  
 MISSED APPROACH: Climb to 2500 on MBS VOR/DME R-230 to KWORD/MBS 6.1 DME/RADAR and hold.

ATIS <b>125.925</b>	GREAT LAKES APP CON * <b>126.45 235.625</b>	SAGINAW TOWER * <b>120.1(CTAF) 257.7</b>	GND CON <b>121.7</b>	CLNC DEL <b>121.85</b>	UNICOM <b>122.95</b>
------------------------	--	---	-------------------------	---------------------------	-------------------------



ELEV 668	<b>D</b>	TDZE 661
----------	----------	----------



REIL Rwy 14 and 32  
 HIRL Rwy 5-23 and 14-32  
 FAF to MAP 4.7 NM

Knots	60	90	120	150	180
Min:Sec	4:42	3:08	2:21	1:53	1:34

CATEGORY	A	B	C	D
S-ILS 23 *	861/24 200 (200-1/2)			
S-LOC 23	1060/24 399 (400-1/2)	1060/35 399 (400-3/4)		
<b>C</b> CIRCLING	1080-1 412 (500-1)	1120-1 452 (500-1)	1240-1 1/2 572 (600-1/2)	1240-2 572 (600-2)

SAGINAW, MICHIGAN  
 Amdt 5A 25JAN24

43°32'N-84°05'W

# MBS INTL (MBS) ILS or LOC RWY 23

EC-1, 20 FEB 2025 to 20 MAR 2025

EC-1, 20 FEB 2025 to 20 MAR 2025