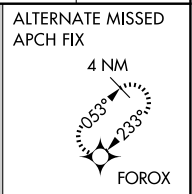
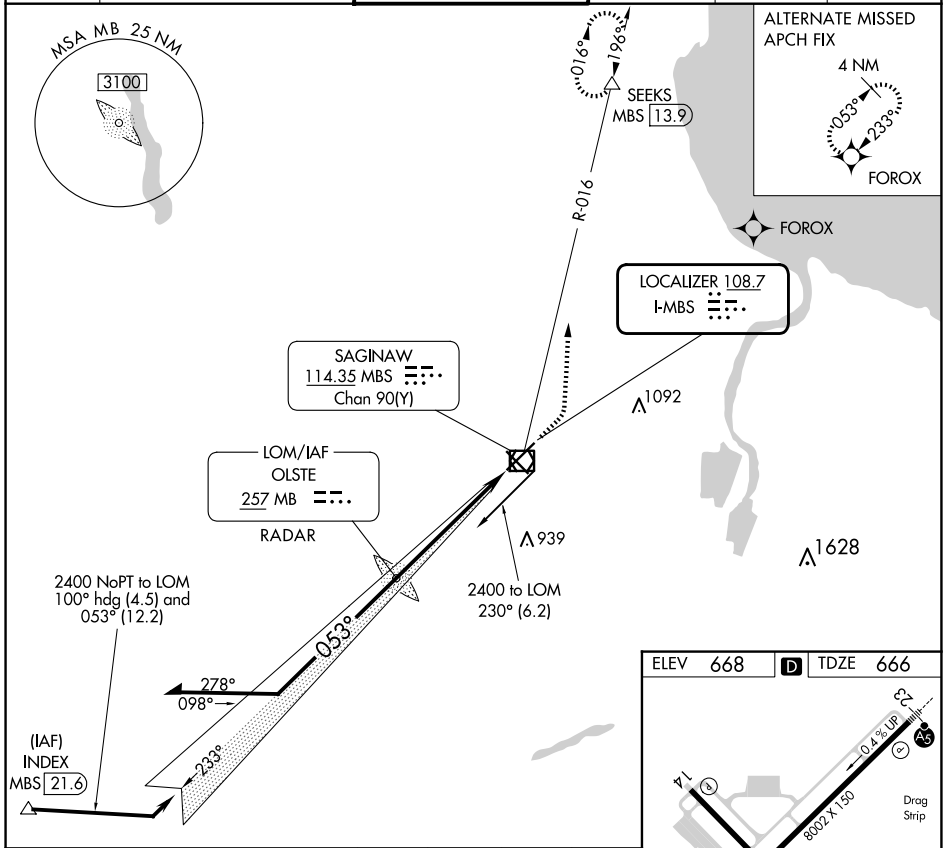


LOC I-MBS 108.7	APP CRS 053°	Rwy Idg 8002
		TDZE 666
		Apt Elev 668

ILS or LOC RWY 5

MBS INTL (MBS)

DME required.		MALSR	MISSED APPROACH: Climb to 1100 then climbing left turn to 2400 on heading 010° and MBS VOR/DME R-016 to SEEKS/MBS 13.9 DME and hold.		
* RVR 1800 authorized with use of FD or AP or HUD to DA.			ATIS 125.925	GREAT LAKES APP CON * 126.45 235.625	SAGINAW TOWER * 120.1 (CTAF) 257.7
		GND CON 121.7	CLNC DEL 121.85	UNICOM 122.95	



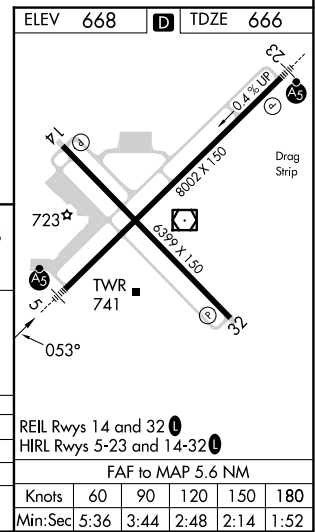
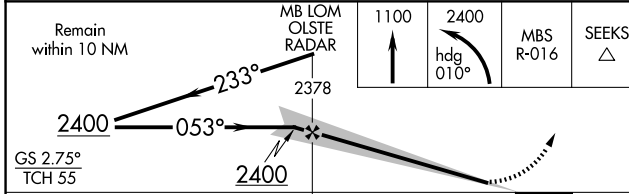
LOCALIZER 108.7
I-MBS

SAGINAW
114.35 MBS
Chan 90(Y)

LOM/IAF
OLSTE
257 MB

2400 NoPT to LOM
100° hdg (4.5) and
053° (12.2)

(IAF)
INDEX
MBS 21.6



REMAIN WITHIN 10 NM	2400	233°	2378	1100	2400	hdg 010°	MBS R-016	SEEKS Δ
GS 2.75°	2400		053°	2400		5.6 NM		
TCH 55								
CATEGORY	A	B	C	D				
S-ILS 5 *	866/24				200 (200-½)			
S-LOC 5	1100/24	434 (500-½)	1100/40	434 (500-¾)				
CIRCLING	1100-1	1120-1	1240-1½	1240-2				
	432 (500-1)	452 (500-1)	572 (600-1½)	572 (600-2)				

ELEV 668	TDZE 666				
REIL Rwy 14 and 32					
HIRL Rwy 5-23 and 14-32					
FAF to MAP 5.6 NM					
Knots	60	90	120	150	180
Min:Sec	5:36	3:44	2:48	2:14	1:52

EC-1, 20 FEB 2025 to 20 MAR 2025

EC-1, 20 FEB 2025 to 20 MAR 2025