

SAGINAW, MICHIGAN

AL-648 (FAA)

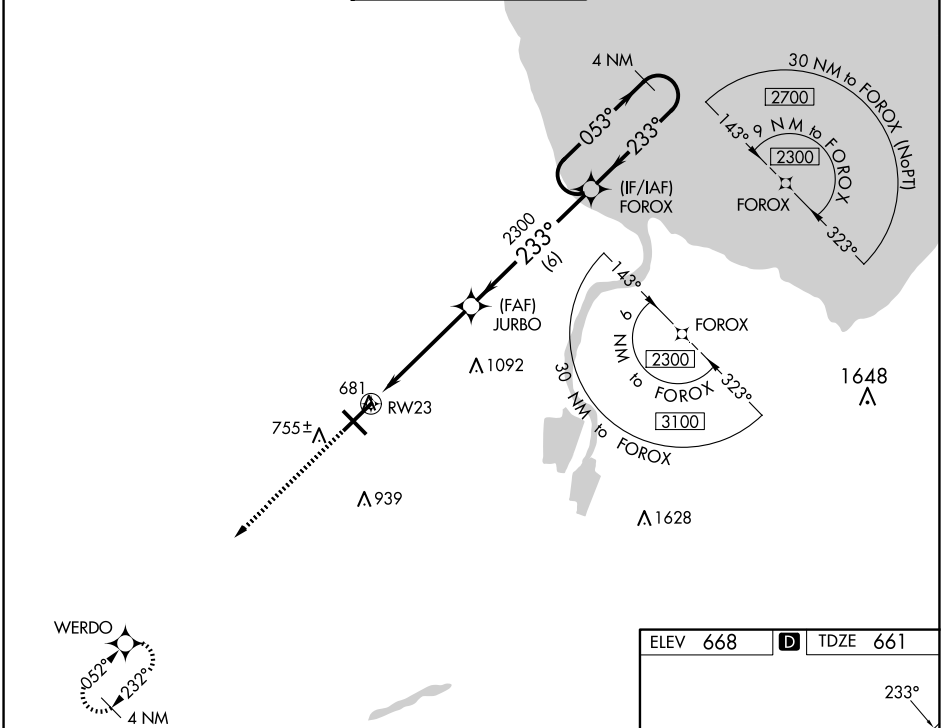
22363

WAAS CH 49010 W23A	APP CRS 233°	Rwy Idg TDZE Apt Elev	8002 661 668
--	------------------------	-----------------------------	---

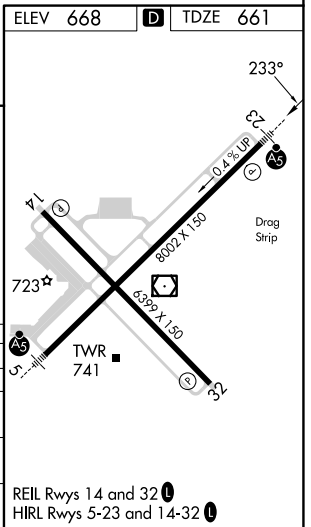
RNAV (GPS) RWY 23

MBS INTL (MBS)

▽ For uncompensated Baro-VNAV systems, LNAV/VNAV NA below -18°C (0°F) or above 54°C (130°F). DME/DME RNP-0.3 NA. For inoperative ALS, increase LNAV/VNAV all Cats visibility to RVR 4500. # RVR 1800 authorized with use of FD or AP or HUD to DA.		MALSR 	MISSED APPROACH: Climb to 2300 direct WERDO and hold.		
ATIS 125.925	GREAT LAKES APP CON * 126.45 235.625	SAGINAW TOWER * 120.1 (CTAF) 257.7	GND CON 121.7	CLNC DEL 121.85	UNICOM 122.95



2300 ↑ WERDO	JURBO 2300	FOROX 2300	4 NM Holding Pattern	
*LNAV only *1.1 NM to RW23	1.1 NM 3.9 NM 6 NM	233° 2300	053° → 2300 ← 233° GP 3.00° TCH 54	
CATEGORY	A	B	C	D
LPV DA #		861/24	200 (200-½)	
LNAV/VNAV DA		940/24	279 (300-½)	
LNAV MDA	1060/24	399 (400-½)	1060/35	399 (400-¾)
CIRCLING	1080-1 412 (500-1)	1120-1 452 (500-1)	1240-1½ 572 (600-1½)	1240-2 572 (600-2)



SAGINAW, MICHIGAN
 Amtd 2 01FEB18

43°32'N - 84°05'W

MBS INTL (MBS) RNAV (GPS) RWY 23

EC-1, 20 FEB 2025 to 20 MAR 2025

EC-1, 20 FEB 2025 to 20 MAR 2025