

WAAS CH 82010 W05A	APP CRS 053°	Rwy Idg TDZE Apt Elev	8002 666 668
----------------------------------------	------------------------	-----------------------------	-----------------------------------------

RNAV (GPS) RWY 5

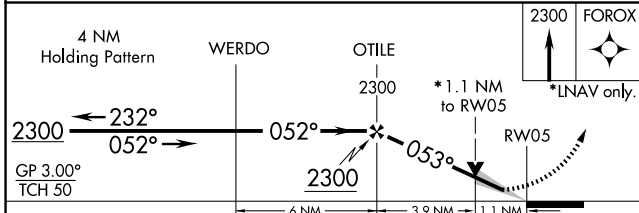
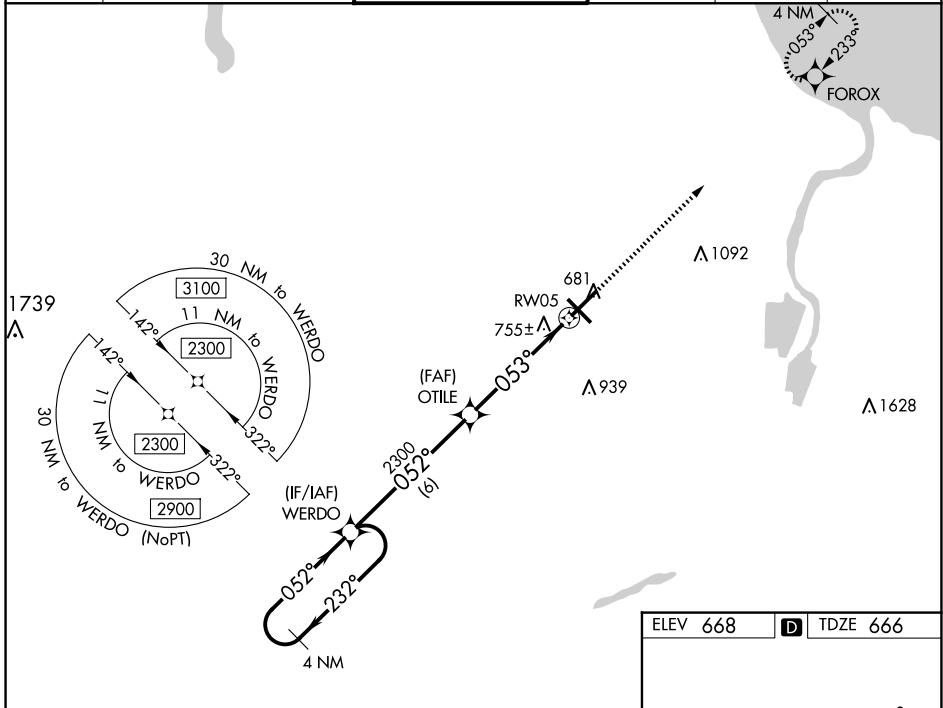
MBS INTL (MBS)

▽ For uncompensated Baro-VNAV systems, LNAV/VNAV NA below -18°C (0°F) or above 54°C (130°F). DME/DME RNP-0.3 NA. For inoperative ALS, increase LNAV/VNAV all Cats visibility to RVR 4500 and LNAV Cats C/D visibility to RVR 6000.
** RVR 1800 authorized with use of FD or AP or HUD to DA.

MALSRL

MISSED APPROACH:
Climb to 2300 direct FOROX and hold.

ATIS 125.925	GREAT LAKES APP CON* 126.45 235.625	SAGINAW TOWER * 120.1(CTAF) 0 257.7	GND CON 121.7	CLNC DEL 121.85	UNICOM 122.95
------------------------	-----------------------------------------------	-----------------------------------------------	-------------------------	---------------------------	-------------------------



ELEV 668 **D** TDZE 666

Diagram showing RWY 5 (8002 X 150) and RWY 32 (6360 X 150). Includes TWY 741, TWR 741, and various altitudes (723, 5, 6360, 8002).
 REIL Rwy 14 and 32
 HIRL Rwy 5-23 and 14-32

EC-1, 20 FEB 2025 to 20 MAR 2025

EC-1, 20 FEB 2025 to 20 MAR 2025