

APP CRS 343°	Rwy Idg 6549
	TDZE 401
	Apt Elev 439

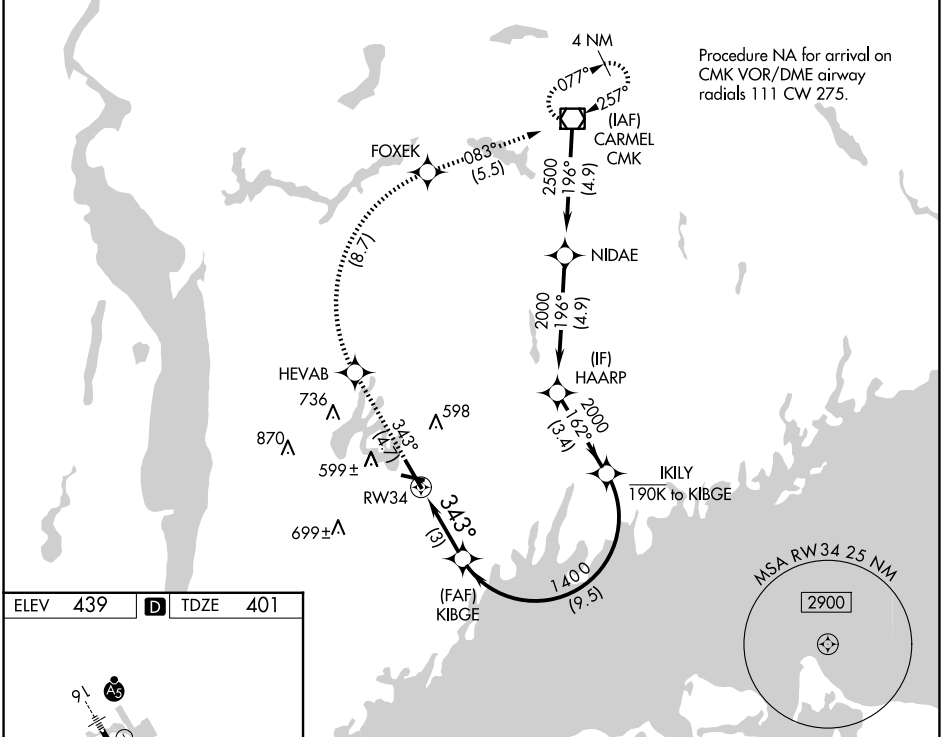
RNAV (RNP) Z RWY 34

WESTCHESTER COUNTY (HPN)

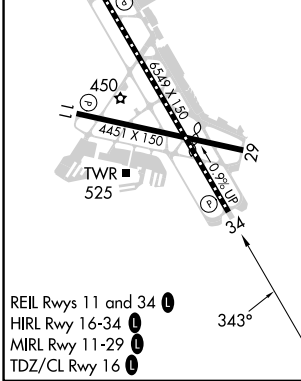
▼ For uncompensated Baro-VNAV systems, procedure NA below -14°C (7°F) or above 54°C (130°F). RF required. GPS required.

MISSED APPROACH: Climb to 3000 on track 343° to HEVAB, right turn to FOXEK, then on track 083° to CMK VOR/DME and hold.

D-ATIS 133.8	NEW YORK APP CON 120.8 126.4 257.65	WESTCHESTER TOWER ★ 118.575 (CTAF) 0 284.65	GND CON 121.825	CLNC DEL 127.25	CLNC DEL 126.4 (when twr closed)	UNICOM 122.95
------------------------	---	---	---------------------------	---------------------------	---	-------------------------



Procedure NA for arrival on CMK VOR/DME airway radials 111 CW 275.



ELEV 439	D	TDZE 401				
3000	tr 343°	HEVAB	FOXEK	tr 083°	CMK	VGSI and RNAV glidepath not coincident (VGSI Angle 3.00/TCH 56).
KIBGE		IKILY	HAARP			
1400		162°	2000			
343°		2000	GP 3.00° TCH 60			
3 NM		9.5 NM		3.4 NM		
CATEGORY	A	B	C	D		
RNP 0.30 DA	788-1 7/8		387 (400-1 3/8)			
AUTHORIZATION REQUIRED						

NE-2, 20 FEB 2025 to 20 MAR 2025

NE-2, 20 FEB 2025 to 20 MAR 2025

CPDLC