

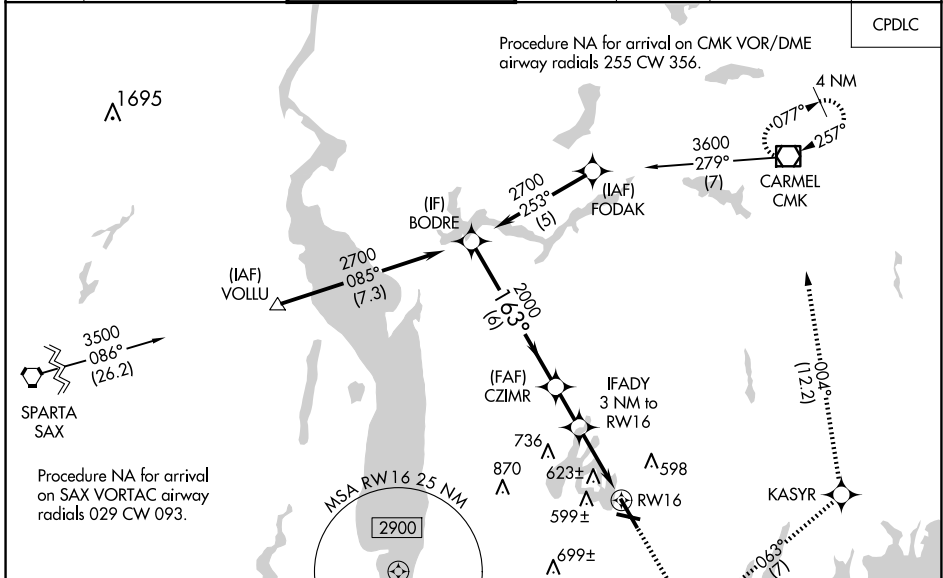
WAAS CH <b>69519</b> <b>W16A</b>	APP CRS <b>163°</b>	Rwy Idg TDZE <b>439</b> Apt Elev <b>439</b>
--	------------------------	---

# RNAV (GPS) Y RWY 16

WESTCHESTER COUNTY (HPN)

<p><b>⚠</b> For uncompensated Baro-VNAV systems, LNAV/VNAV NA below -1.5°C (5°F) or above 54°C (130°F).  <b>⚠</b> Circling Rwy 11, 29 NA at night.                  DME/DME RNP-0.3 NA.</p>	<p>MALSR</p>	<p>MISSED APPROACH: Climb to 2300 direct IKEWI and left turn on track 063° to KASYR and on track 004° to CMK VOR/DME and hold.</p>
---	--------------	--

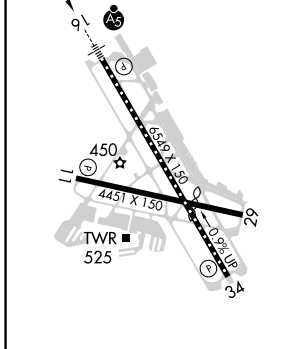
D-ATIS <b>133.8</b>	NEW YORK APP CON <b>120.8 126.4 257.65</b>	WESTCHESTER TOWER * <b>118.575</b> (CTAF) <b>284.65</b>	GND CON <b>121.825</b>	CLNC DEL <b>127.25</b>	CLNC DEL <b>126.4</b> (when twr closed)	UNICOM <b>122.95</b>
------------------------	---	--	---------------------------	---------------------------	---	-------------------------



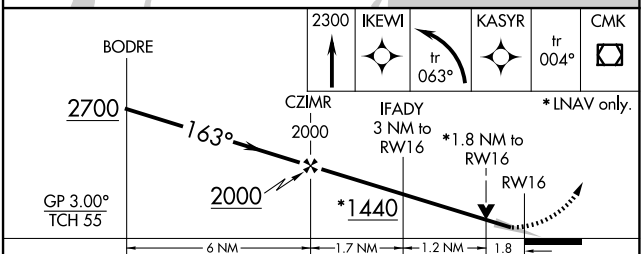
NE-2, 20 FEB 2025 to 20 MAR 2025

NE-2, 20 FEB 2025 to 20 MAR 2025

ELEV <b>439</b>	<b>D</b>	TDZE <b>439</b>
-----------------	----------	-----------------



REIL Rws 11 and 34 **Ⓛ**  
 HIRL Rwy 16-34 **Ⓛ**  
 MIRL Rwy 11-29 **Ⓛ**  
 TDZ/CL Rwy 16 **Ⓛ**



CATEGORY	A	B	C	D
LPV DA		689/24	250 (300-½)	
LNAV/VNAV DA		978-1½	539 (600-1½)	
LNAV MDA	1060/24	621 (700-½)	1060/60 621 (700-1¼)	1060-1½ 621 (700-1½)
<b>C</b> CIRCLING	1060-1	621 (700-1)	1080-1¾ 641 (700-1¾)	1200-2 ½ 761 (800-2½)