

WAAS CH <b>99410</b> <b>W34A</b>	APP CRS <b>343°</b>	Rwy Idg TDZE Apt Elev	<b>6549</b> <b>401</b> <b>439</b>
--	------------------------	-----------------------------	---

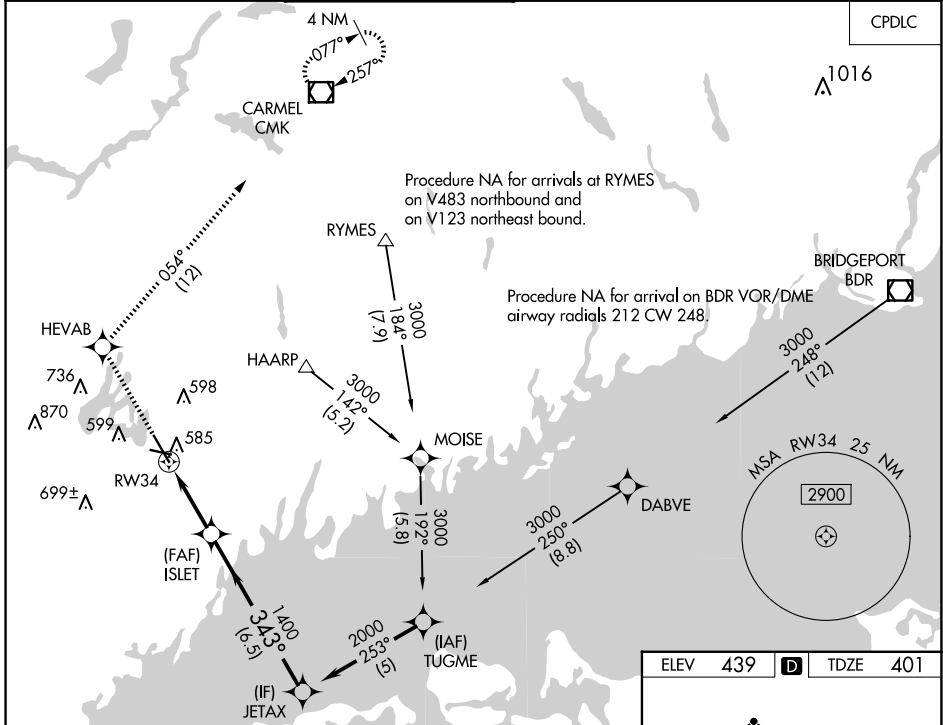
# RNAV (GPS) Y RWY 34

WESTCHESTER COUNTY (HPN)

**▼** For uncompensated Baro-VNAV systems, LNAV/VNAV NA below -15°C (5°F) or above 54°C (130°F). Circling Rwy 11, 29 NA at night.  
**▲** Rwy 34 helicopter visibility reduction below ¾ SM NA. DME/DME RNP-0.3 NA.

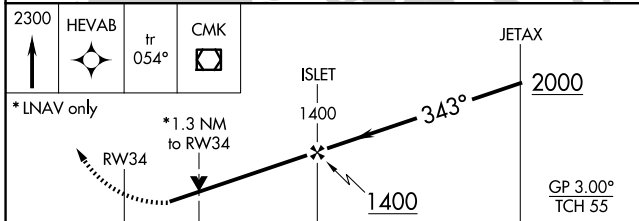
**MISSED APPROACH:** Climb to 2300 direct HEVAB and on track 054° to CMK VOR/DME and hold.

D-ATIS <b>133.8</b>	NEW YORK APP CON <b>120.8 126.4 257.65</b>	WESTCHESTER TOWER ★ <b>118.575 (CTAF) 0 284.65</b>	GND CON <b>121.825</b>	CLNC DEL <b>127.25</b>	CLNC DEL <b>126.4</b> (when twr closed)	UNICOM <b>122.95</b>
------------------------	---	---	---------------------------	---------------------------	---	-------------------------

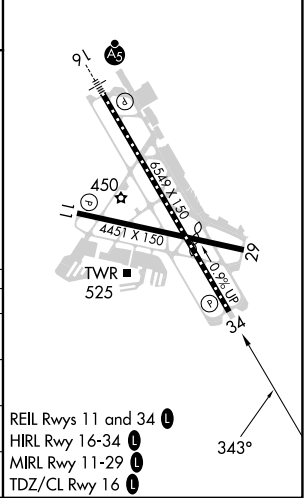


NE-2, 20 FEB 2025 to 20 MAR 2025

NE-2, 20 FEB 2025 to 20 MAR 2025



ELEV	439	D	TDZE	401
------	-----	---	------	-----



CATEGORY	A	B	C	D
LPV DA	723/60		322 (300-1¼)	
LNAV/VNAV DA	780-1½		379 (400-1½)	
LNAV MDA	840/50	439 (500-1)	840/60 439 (500-1¼)	840-1½ 439 (500-1½)
<b>C</b> CIRCLING	980-1	541 (600-1)	1080-1¾ 641 (700-1¾)	1200-2½ 761 (800-2½)

REIL Rwys 11 and 34 **L**  
 HIRL Rwy 16-34 **L**  
 MRL Rwy 11-29 **L**  
 TDZ/CL Rwy 16 **L**