

LOC/DME I-RSR <b>110.9</b> Chan 46	APP CRS <b>109°</b>	Rwy ldg TDZE Apt Elev	<b>7001</b> <b>980</b> <b>1009</b>
--	------------------------	-----------------------------	--

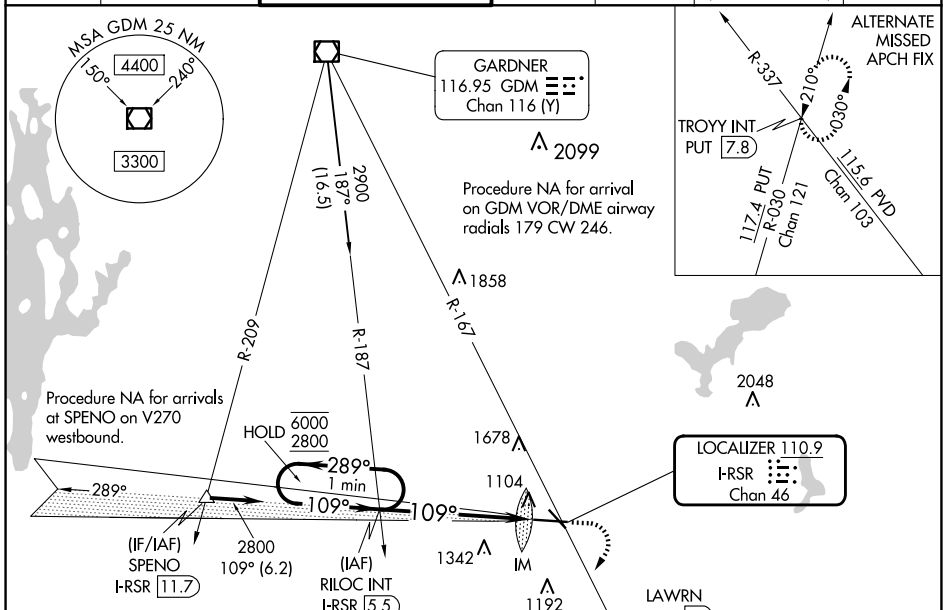
# ILS or LOC RWY 11

WORCESTER RGNL (ORH)

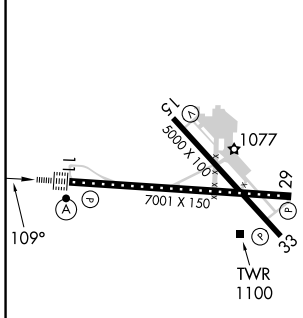
**▼** For inop ALS, increase S-LOC 11 Cats C and D visibility to 1 1/2 SM. When control tower closed: inop table does not apply to S-ILS 11 all Cats. When control tower closed: for inop ALS, increase S-LOC 11 Cat C and D visibility to 1 1/2 SM.

**ALSIF-2**  
MISSED APPROACH: Climb to 1800 then climbing right turn to 3100 on heading 230° and on GDM VOR/DME R-167 to LAWNRN/GDM 23 DME and hold, continue climb-in-hold to 3100.

ATIS <b>126.55</b>	BRADLEY APP CON <b>119.0 327.1</b>	WORCESTER TOWER ★ <b>120.5 (CTAF) 263.0</b>	GND CON <b>123.85</b>	CLNC DEL <b>128.65</b>	CLNC DEL <b>119.0</b> (When twr closed)	UNICOM <b>122.95</b>
-----------------------	---------------------------------------	--	--------------------------	---------------------------	---	-------------------------



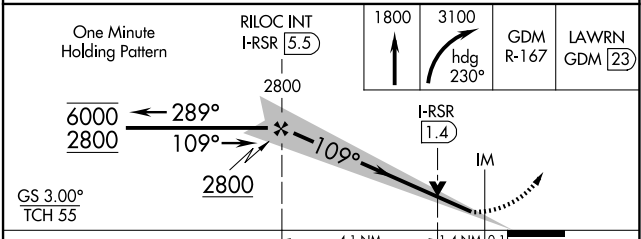
ELEV 1009	<b>D</b>	TDZE 980
-----------	----------	----------



TDZ/CL Rwy 11  
REIL Rws 15, 29 and 33  
HIRL Rwy 11-29  
MIRL Rwy 15-33

FAF to MAP 5.5 NM

Knots	60	90	120	150	180
Min:Sec	5:30	3:40	2:45	2:12	1:50



CATEGORY	A	B	C	D
S-ILS 11	1180/18		200 (200-1/2)	
S-LOC 11	1500/24	520 (500-1/2)	1500/55	520 (500-1)
<b>C</b> CIRCLING	1560-1 551 (600-1)	1740-1 731 (800-1)	2000-3	991 (1000-3)

NE-1, 20 FEB 2025 to 20 MAR 2025

NE-1, 20 FEB 2025 to 20 MAR 2025