

WAAS Ch 82299 W29A	APP CRS 289°	Rwy Idg TDZE Apt Elev	7001 990 1009
--	------------------------	-----------------------------	--

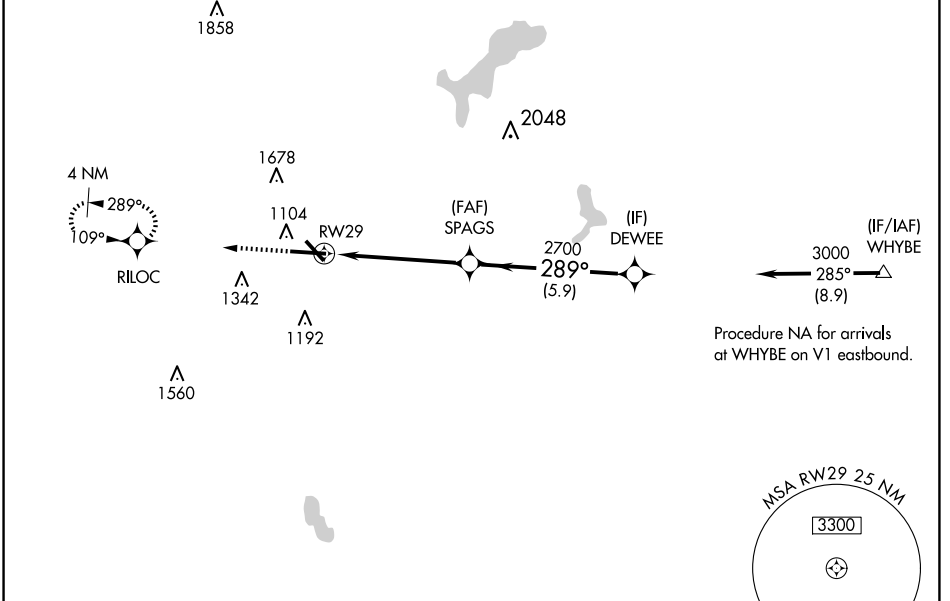
RNAV (GPS) RWY 29

WORCESTER RGNL (ORH)

▽ For uncompensated Baro-VNAV systems, LNAV/VNAV NA below -20°C (-4°F) or above 54°C (130°F).
△ DME/DME RNP -0.3 NA.

MISSED APPROACH: Climb to 3000 direct RILOC and hold.

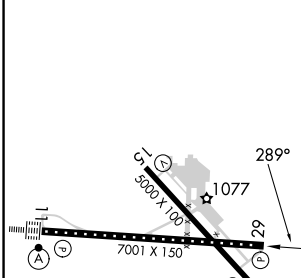
ATIS 126.55	BRADLEY APP CON 119.0 327.1	WORCESTER TOWER* 120.5 (CTAF) 263.0	GND CON 123.85	CLNC DEL 128.65	CLNC DEL 119.0 (When twr closed)	UNICOM 122.95
-----------------------	---------------------------------------	---	--------------------------	---------------------------	---	-------------------------



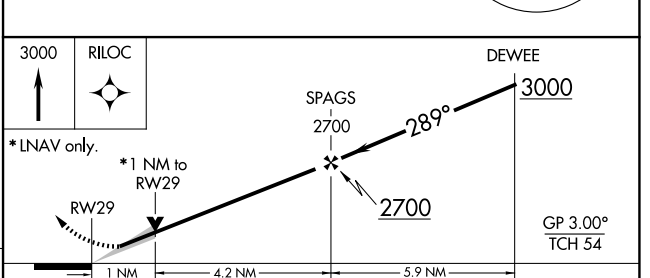
NE-1, 20 FEB 2025 to 20 MAR 2025

NE-1, 20 FEB 2025 to 20 MAR 2025

ELEV 1009	D	TDZE 990
-----------	----------	----------



TDZ/CL Rwy 11
 REIL Rws 15, 29 and 33 **Ⓛ**
 HIRL Rwy 11-29 **Ⓛ**
 MIRL Rwy 15-33 **Ⓛ**



CATEGORY	A	B	C	D
LPV DA		1190/50	200 (200-1)	
LNAV/VNAV DA		1261/50	271 (300-1)	
LNAV MDA		1360/55	370 (400-1)	
C CIRCLING	1560-1 551 (600-1)	1720-1 711 (800-1)	2000-3	991 (1000-3)