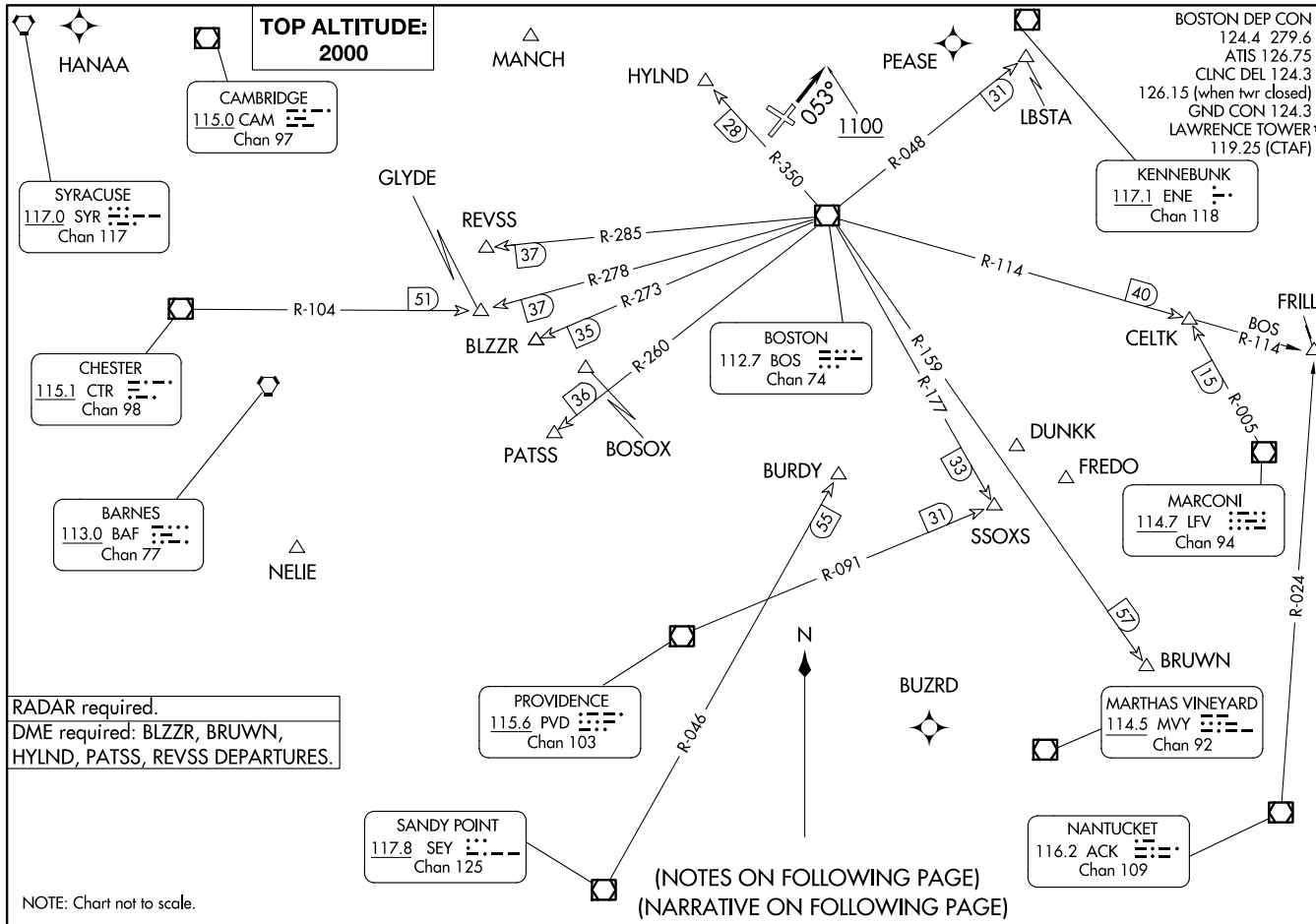


LAWRENCE TWO DEPARTURE  
(LWM2.LWM) 29DEC22

(LWM2.LWM) 24193  
LAWRENCE TWO DEPARTURE

AL-654 (FAA)

LAWRENCE MUNI (LWM)  
LAWRENCE, MASSACHUSETTS



**RADAR required.**  
DME required: BLZZR, BRUWN,  
HYLND, PATSS, REVSS DEPARTURES.

NOTE: Chart not to scale.

LAWRENCE, MASSACHUSETTS  
LAWRENCE MUNI (LWM)

# LAWRENCE TWO DEPARTURE



## DEPARTURE ROUTE DESCRIPTION

TAKEOFF RUNWAY 5: Climb on heading 053° to 1100, then as assigned by ATC, thence....

TAKEOFF RUNWAYS 14, 23, 32: Climb on heading as assigned by ATC, thence....

....expect RADAR vectors to assigned route/navaid/fix. Maintain 2000.  
Expect filed altitude/flight level 10 minutes after departure.

### TAKEOFF MINIMUMS:

Rwy 5: 300-1½ or standard with minimum climb of 435' per NM to 500.

Rwy 14: 300-1 or standard with minimum climb of 625' per NM to 600.

Rwy 23: 300-1 or standard with minimum climb of 350' per NM to 400.

Rwy 32: Standard.

NOTE: Non RNAV equipped aircraft can expect vectors on assigned route.

NOTE: BLZZR DEPARTURES expect vectors on BOS R-273.

NOTE: BRUWN DEPARTURES expect vectors on BOS R-159.

NOTE: CELTK DEPARTURES expect vectors on BOS R-114.

NOTE: HYLND DEPARTURES expect vectors on BOS R-350.

NOTE: PATSS DEPARTURES expect vectors on BOS R-260.

NOTE: REVSS DEPARTURES expect vectors on BOS R-285.

NOTE: SSOXS DEPARTURES expect vectors on BOS R-177.

NE-1, 20 FEB 2025 to 20 MAR 2025

NE-1, 20 FEB 2025 to 20 MAR 2025