

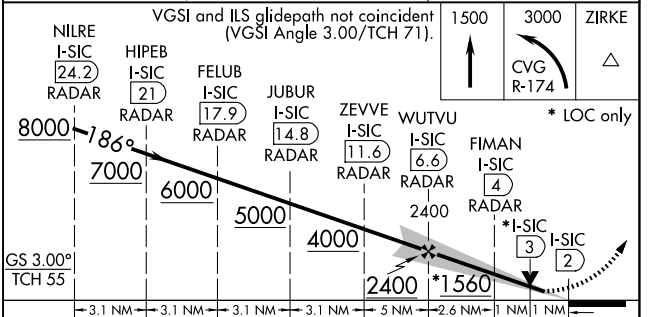
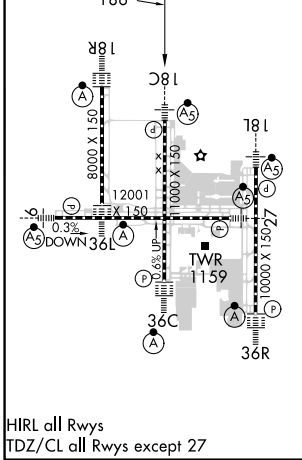
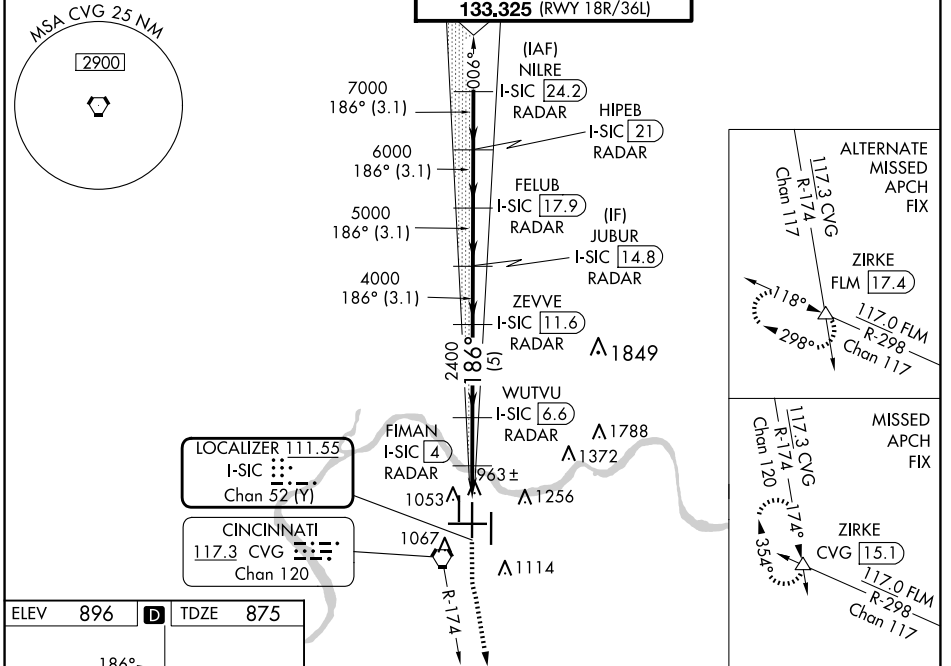
LOC/DME I-SIC 111.55 Chan 52 (Y)	APP CRS 186°	Rwy Idg 11000 TDZE 875 Apt Elev 896
--	------------------------	--

ILS or LOC RWY 18C

CINCINNATI/NORTHERN KENTUCKY INTL (CVG)

RADAR required for procedure entry. DME or RADAR required.	MALSR 	MISSED APPROACH: Climb to 1500 then climbing left turn to 3000 on CVG R-174 to ZIRKE INT/CVG 15.1 DME and hold.
Simultaneous approach authorized.		

D-ATIS ARR 134.375 DEP 135.3	CINCINNATI APP CON 119.7 363.15 (090°-269°) 123.875 363.15 (270°-089°)	CINCINNATI TOWER 118.975 360.85 (RWY 18L/36R) 118.3 (RWYS 18C/36C, 09/27) 133.325 (RWY 18R/36L)	GN D CON 121.7	CLNC DEL 127.175	CPDLC
---	--	---	--------------------------	----------------------------	-------



CATEGORY	A	B	C	D
S-ILS 18C	1075/18 200 (200-½)			
S-LOC 18C	1260/24 385 (400-½)	1260/35 385 (400-¾)		
CIRCLING	1460-1 564 (600-1)	1560-1¾ 664 (700-1¾)	1560-2 664 (700-2)	

SE-1, 20 FEB 2025 to 20 MAR 2025

SE-1, 20 FEB 2025 to 20 MAR 2025