

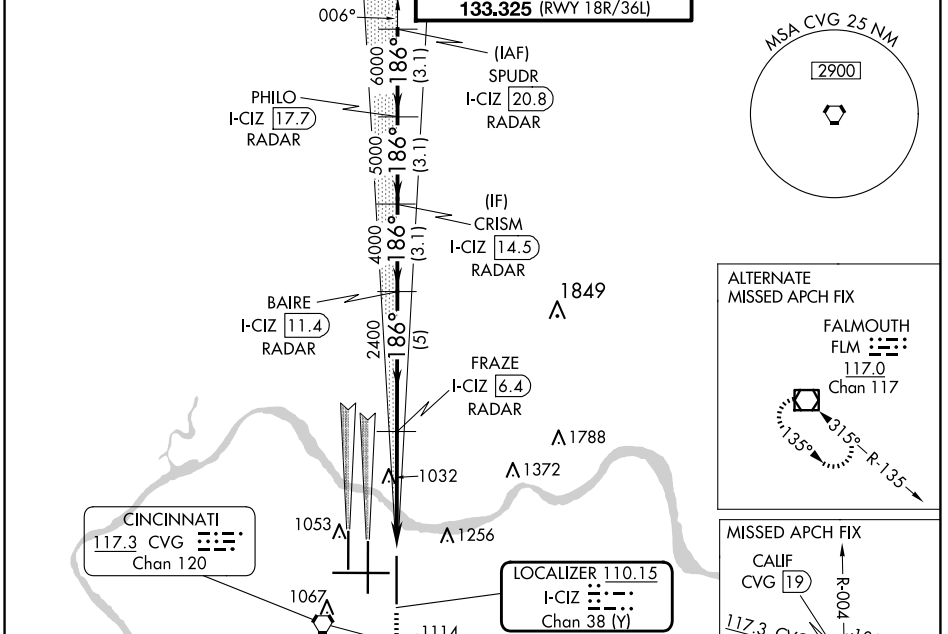
LOC/DME I-CIZ <b>110.15</b> Chan <b>38</b> (Y)	APP CRS <b>186°</b>	Rwy Idg TDZE <b>889</b> Apt Elev <b>896</b>	<b>10000</b>
--	------------------------	---	--------------

# ILS or LOC RWY 18L

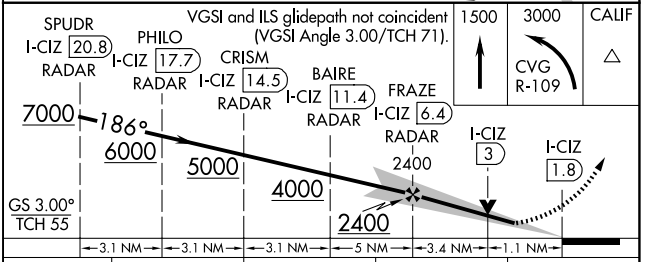
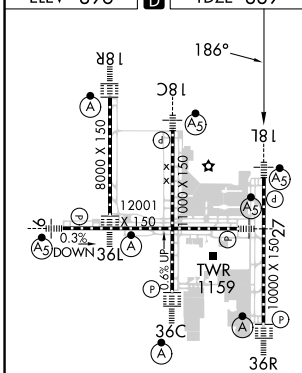
CINCINNATI/NORTHERN KENTUCKY INTL (CVG)

RADAR required for procedure entry. DME or RADAR required.		MALSR	MISSED APPROACH: Climb to 1500 then climbing left turn to 3000 on CVG R-109 to CALIF INT/CVG 19 DME and hold.	
Simultaneous approach authorized with Rwy 18C and 18R. For inop ALS, increase S-LOC 18L Cat C and D visibility to RVR 6000.				

D-ATIS ARR <b>134.375</b> DEP <b>135.3</b>	CINCINNATI APP CON <b>119.7 363.15</b> (090°-269°) <b>123.875 363.15</b> (270°-089°)	CINCINNATI TOWER <b>118.975 360.85</b> (RWY 18L/36R) <b>118.3</b> (RWYS 18C/36C, 09/27) <b>133.325</b> (RWY 18R/36L)	GND CON <b>121.7</b>	CLNC DEL <b>127.175</b>	CPDLC
---	--	---	-------------------------	----------------------------	-------



ELEV 896	D	TDZE 889
----------	---	----------



CATEGORY	A	B	C	D
S-ILS 18L	1089/18 200 (200-½)			
S-LOC 18L	1300/24	411 (500-½)	1300/40	411 (500-¾)
CIRCLING	1460-1	564 (600-1)	1560-1¾ 664 (700-1¾)	1560-2 664 (700-2)

SE-1, 20 FEB 2025 to 20 MAR 2025

SE-1, 20 FEB 2025 to 20 MAR 2025