

LOC/DME I-CVG 109.9 Chan 36	APP CRS 006°	Rwy Idg 11000 TDZE 851 Apt Elev 896
--	------------------------	--

ILS or LOC RWY 36C

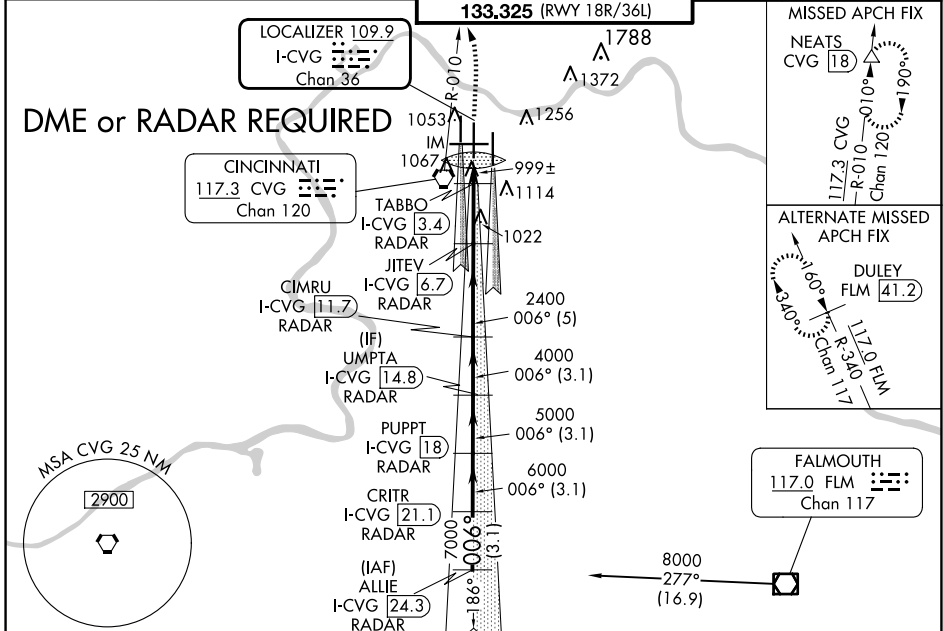
CINCINNATI/NORTHERN KENTUCKY INTL (CVG)

Simultaneous approach authorized with Rwy 36L/R.
DME required.

ALSf-2

MISSED APPROACH: Climb to 1500 then climbing left turn to 3000 via CVG R-010 to NEATS/CVG 18 DME and hold.

D-ATIS ARR 134.375 DEP 135.3	CINCINNATI APP CON 119.7 363.15 (090°-269°) 123.875 363.15 (270°-089°)	CINCINNATI TOWER 118.975 360.85 (RWY 18L/36R) 118.3 (RWYS 18C/36C, 09/27) 133.325 (RWY 18R/36L)	GND CON 121.7	CLNC DEL 127.175	CPDLC
---	--	---	-------------------------	----------------------------	-------

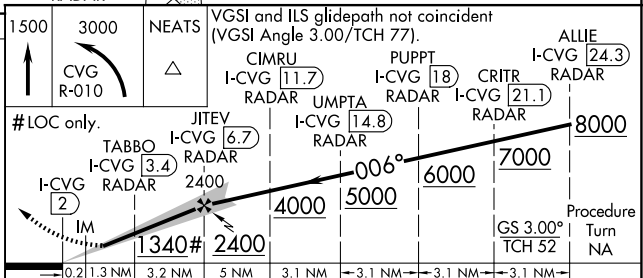


ELEV 896 TDZE 851

TDZ/CL all Rwy's except 27
HIRL all Rwy's

FAF to MAP 4.7 NM

Knots	60	90	120	150	180
Min:Sec	4:42	3:08	2:21	1:53	1:34



CATEGORY	A	B	C	D
S-ILS 36C	1051/18 200 (200-½)			
S-LOC 36C	1340/24	489 (500-½)	1340/50	489 (500-1)
CIRCLING	1460-1	564 (600-1)	1560-1¾ 664 (700-1¾)	1560-2 664 (700-2)
TABBO FIX MINIMUMS				
S-LOC 36C	1260/24	409 (400-½)	1260/40	409 (400-¾)
CIRCLING	1460-1	564 (600-1)	1560-1¾ 664 (700-1¾)	1560-2 664 (700-2)

SE-1, 20 FEB 2025 to 20 MAR 2025

SE-1, 20 FEB 2025 to 20 MAR 2025