

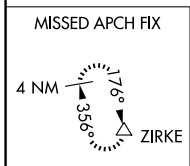
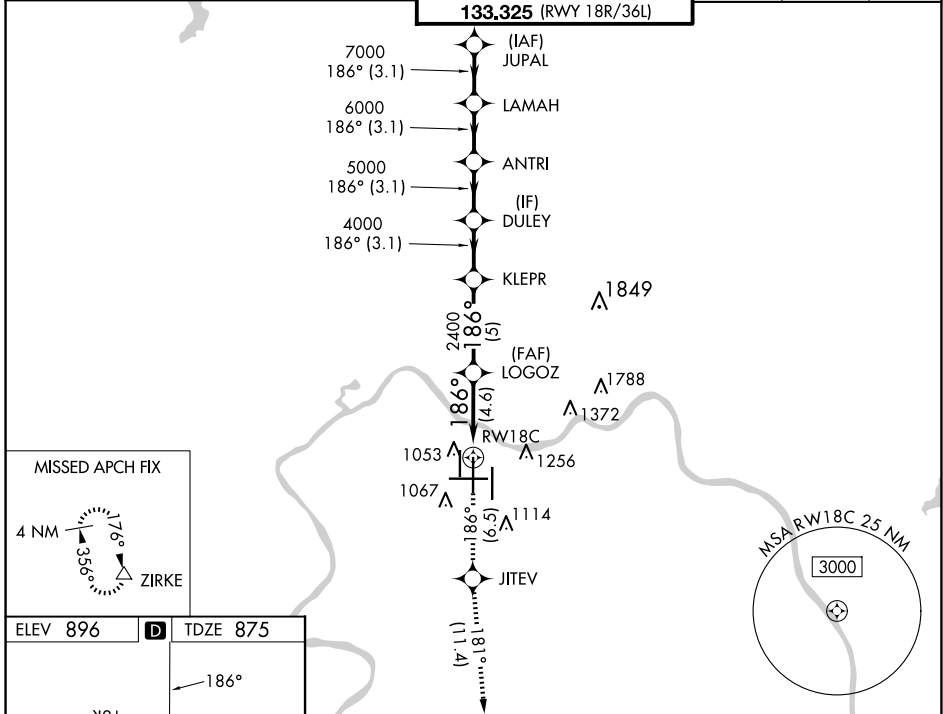
APP CRS	Rwy Idg	11000
186°	TDZE	875
	Apt Elev	896

RNAV (RNP) Z RWY 18C

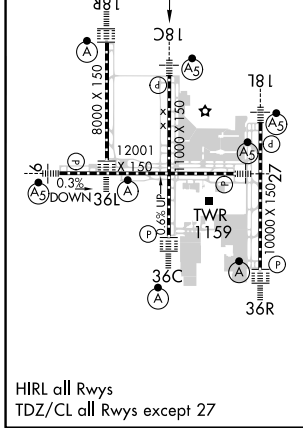
CINCINNATI/NORTHERN KENTUCKY INTL (CVG)

RNP AR APCH - GPS.	MALSR 	MISSED APPROACH: Climb to 3000 on track 186° to JITEV and on track 181° to ZIRKE and hold.
<p>Simultaneous approach authorized. For uncompensated Baro-VNAV systems, procedure NA below -17°C or above 54°C. For inop ALS, increase RNP 0.15 and RNP 0.30 all Cats visibility to 1 3/8 SM.</p>		

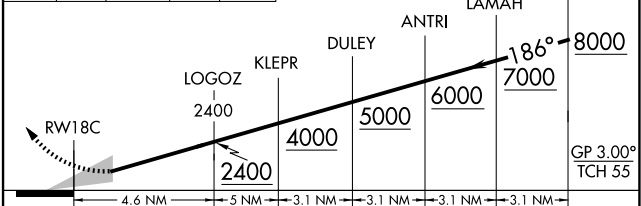
D-ATIS	CINCINNATI APP CON	CINCINNATI TOWER	GND CON	CLNC DEL	CPDLC
ARR 134.375 DEP 135.3	119.7 363.15 (090°-269°) 123.875 363.15 (270°-089°)	118.975 360.85 (RWY 18L/36R) 118.3 (RWYS 18C/36C, 09/27) 133.325 (RWY 18R/36L)	121.7	127.175	



ELEV 896	D	TDZE 875
----------	----------	----------



3000	JITEV	ZIRKE	VGSI and RNAV glidepath not coincident (VGSI Angle 3.00/TCH 71).
↑	tr 186°	tr 181°	



CATEGORY	A	B	C	D
RNP 0.15 DA		1323/45	448 (500-7%)	
RNP 0.30 DA		1391/55	516 (500-1)	

AUTHORIZATION REQUIRED

SE-1, 20 FEB 2025 to 20 MAR 2025

SE-1, 20 FEB 2025 to 20 MAR 2025