

APP CRS	Rwy Idg	8000
186°	TDZE	868
	Apt Elev	896

RNAV (RNP) Z RWY 18R

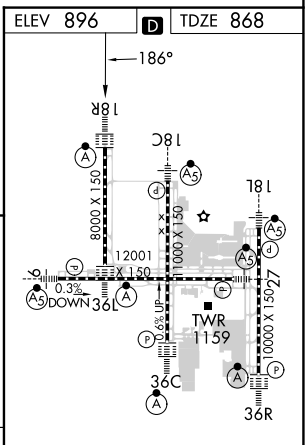
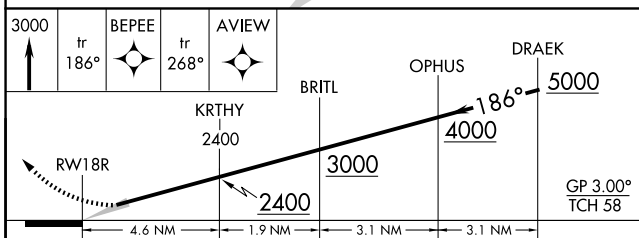
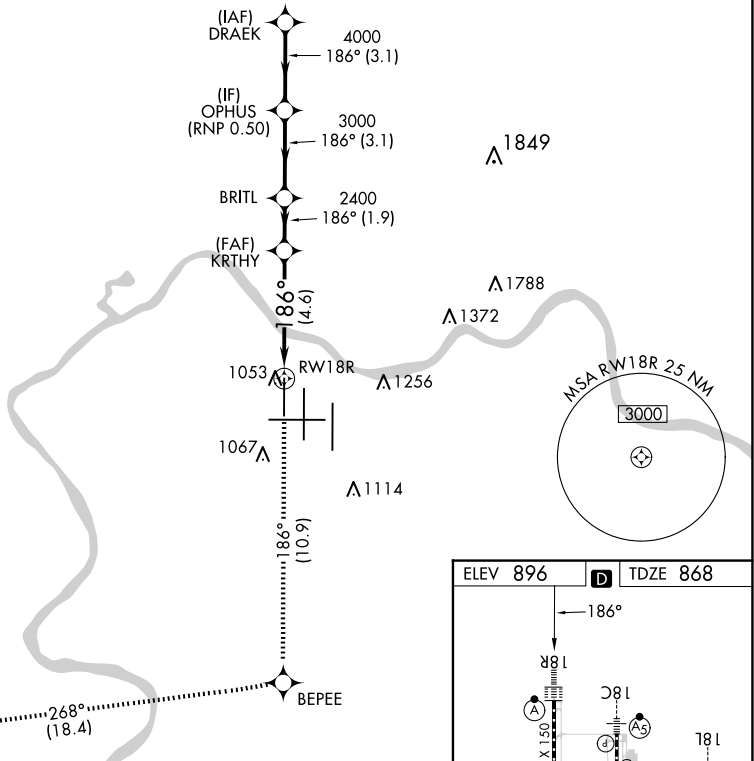
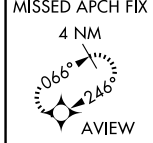
CINCINNATI/NORTHERN KENTUCKY INTL (CVG)

RNP AR APCH - GPS.

Use of FD or AP required during simultaneous operations. Simultaneous approach authorized with Rwy 18C/L. For uncompensated Baro-VNAV systems, procedure NA below -17°C or above 54°C. For inop ALS, increase RNP 0.30 all Cats visibility to RVR 6000.

ALSF-2
 MISSED APPROACH: Climb to 3000 on track 186° BEPEE and on track 268° to AVIEW and hold.

D-ATIS ARR 134.375 DEP 135.3	CINCINNATI APP CON 119.7 363.15 (090°-269°) 123.875 363.15 (270°-089°)	CINCINNATI TOWER 118.975 360.85 (RWY 18L/36R) 118.3 (RWYS 18C/36C, 09/27) 133.325 (RWY 18R/36L)	GND CON 121.7	CLNC DEL 127.175	CPDLC
---	--	--	-------------------------	----------------------------	-------



CATEGORY	A	B	C	D
RNP 0.30 DA		1287/40	419 (400-¾)	

AUTHORIZATION REQUIRED

HIRL all Rwys
 TDZ/CL all Rwys except 27

SE-1, 20 FEB 2025 to 20 MAR 2025

SE-1, 20 FEB 2025 to 20 MAR 2025