


APP CRS **276°**
 Rwy Idg **12000**
 TDZE **875**
 Apt Elev **896**

RNAV (RNP) Z RWY 27

CINCINNATI/NORTHERN KENTUCKY INTL (CVG)

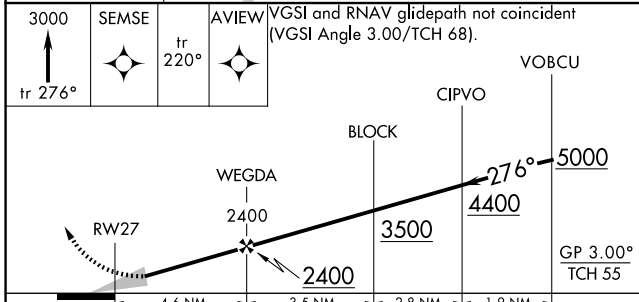
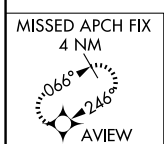
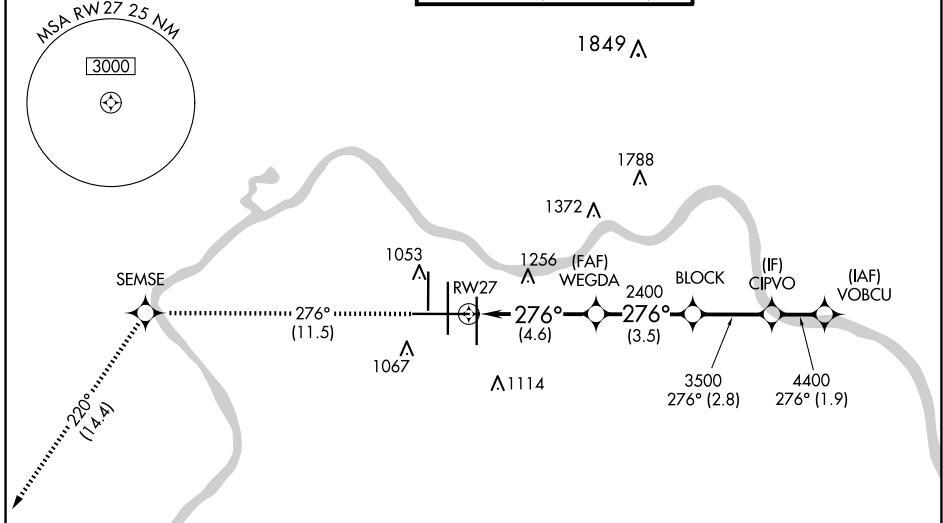
RNP AR APCH - GPS

For uncompensated Baro-VNAV systems, procedure NA below -16° C or above 54° C. For inop ALS, increase RNP 0.23 all Cats visibility to 1½ SM and increase RNP 0.30 all Cats visibility to 1¾ SM.

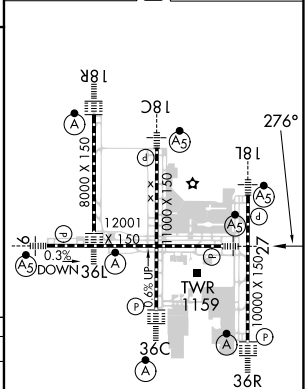
MALSR 

MISSED APPROACH: Climb to 3000 on track 276° SEMSE and on track 220° to AVIEW and hold.

D-ATIS		CINCINNATI APP CON		CINCINNATI TOWER		GND CON	CLNC DEL	CPDLC
ARR	DEP	119.7	363.15 (090°-269°)	118.975	360.85 (RWY 18L/36R)	121.7	127.175	
134.375	135.3	123.875	363.15 (270°-089°)	118.3	(RWYS 18C/36C, 09/27)			
				133.325	(RWY 18R/36L)			



ELEV 896 **D** TDZE 875



CATEGORY	A	B	C	D
RNP 0.15 DA		1296/40	421 (500-¾)	
RNP 0.23 DA		1378/55	503 (500-1)	
RNP 0.30 DA		1445-1¼	570 (600-1¼)	

AUTHORIZATION REQUIRED

HIRL all Rwys
 TDZ/CL all Rwys except 27

SE-1, 20 FEB 2025 to 20 MAR 2025

SE-1, 20 FEB 2025 to 20 MAR 2025