

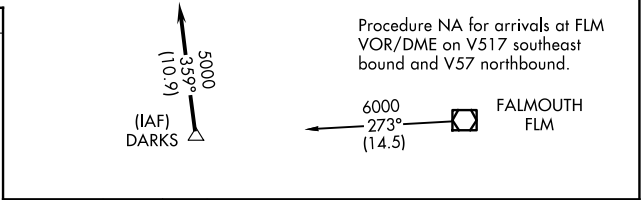
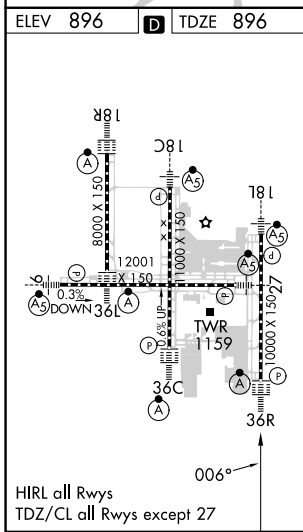
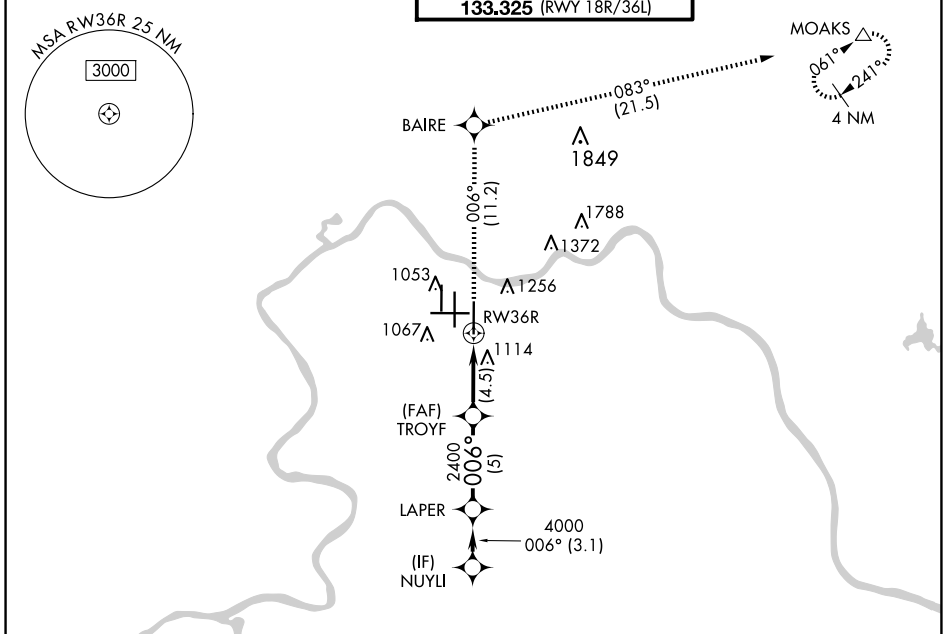
APP CRS	Rwy Idg	<b>10000</b>
<b>006°</b>	TDZE	<b>896</b>
	Apt Elev	<b>896</b>

# RNAV (RNP) Z RWY 36R

CINCINNATI/NORTHERN KENTUCKY INTL (CVG)

RNP AR APCH - GPS.		ALSF-2	MISSED APPROACH: Climb to 3000 on track 006° to BAIRE and on track 083° to MOAKS and hold.	
<p>Simultaneous approach authorized. For uncompensated Baro-VNAV systems, procedure NA below -17°C or above 54°C.</p>				

D-ATIS	CINCINNATI APP CON	CINCINNATI TOWER	GND CON	CLNC DEL	CPDLC
ARR <b>134.375</b> DEP <b>135.3</b>	<b>119.7 363.15</b> (090°-269°) <b>123.875 363.15</b> (270°-089°)	<b>118.975 360.85</b> (RWY 18L/36R) <b>118.3</b> (RWYS 18C/36C, 09/27) <b>133.325</b> (RWY 18R/36L)	<b>121.7</b>	<b>127.175</b>	



3000	tr 006°	BAIRE	tr 083°	MOAKS	VGSI and RNAV glidepath not coincident (VGSI Angle 3.00/TCH 70). NUYLI	
				LAPER	5000	
				TROYF	2400	
				RW36R	4000	
					GP 3.00° TCH 55	
					4.5 NM   5 NM   3.1 NM	
CATEGORY	A		B		C	D
RNP 0.30 DA	1329/40		433 (500-¾)			

**AUTHORIZATION REQUIRED**

SE-1, 20 FEB 2025 to 20 MAR 2025

SE-1, 20 FEB 2025 to 20 MAR 2025