

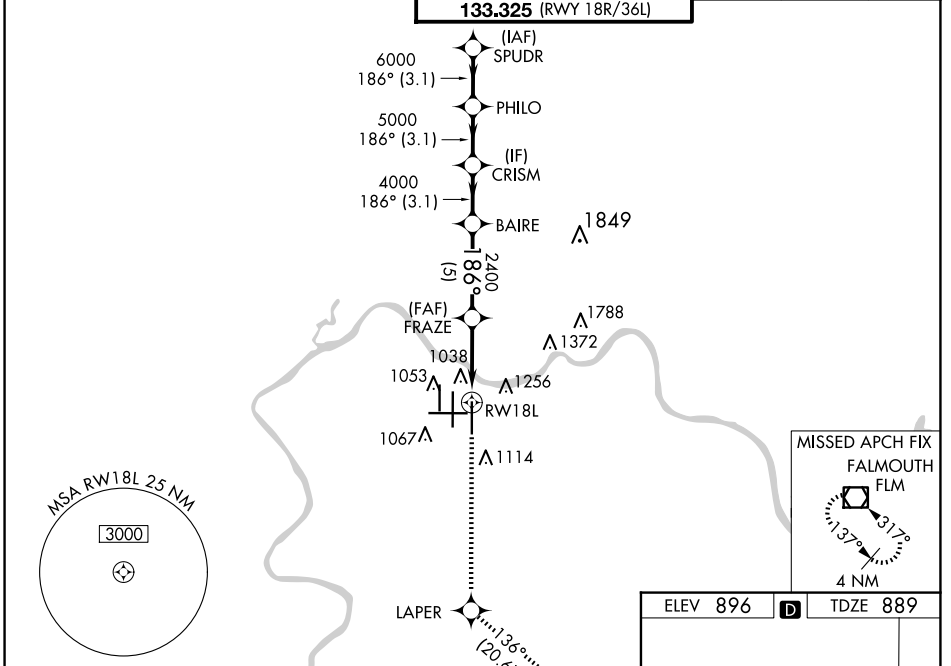
WAAS CH <b>40103</b> <b>W18A</b>	APP CRS <b>186°</b>	Rwy Idg <b>10000</b> TDZE <b>889</b> Apt Elev <b>896</b>
--	------------------------	--

# RNAV (GPS) Y RWY 18L

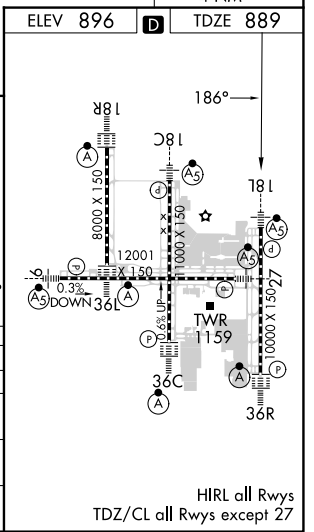
CINCINNATI/NORTHERN KENTUCKY INTL (CVG)

RADAR required for procedure entry. RNP APCH - GPS.		MALSR 	MISSED APPROACH: Climb to 3000 direct LAPER and on track 136° to FLM VOR/DME and hold.
For uncompensated Baro-VNAV systems, LNAV/VNAV NA below -17°C or above 54°C. Simultaneous approach authorized with Rwy 18C/R. LNAV procedure NA during simultaneous operations. Use of FD or AP required during simultaneous operations. For inop ALS, increase LNAV/VNAV all Cats and LNAV Cat C/D visibility to 1 3/8 SM.			

D-ATIS ARR <b>134.375</b> DEP <b>135.3</b>	CINCINNATI APP CON <b>119.7 363.15</b> (090°-269°) <b>123.875 363.15</b> (270°-089°)	CINCINNATI TOWER <b>118.975 360.85</b> (RWY 18L/36R) <b>118.3</b> (RWYS 18C/36C, 09/27) <b>133.325</b> (RWY 18R/36L)	GN D CON <b>121.7</b>	CLNC DEL <b>127.175</b>	CPDLC
---	--	---	--------------------------	----------------------------	-------



3000	LAPER	FLM	VGSi and RNAV glidepath not coincident (VGSi Angle 3.00/TCH 71).	
↑			tr 136°	
RWY 18L → FRAZE (2400) → BAIRE (4000) → CRISM (5000) → PHILO (6000) → SPUDR (7000)				
GP 3.00° TCH 55				
CATEGORY	A	B	C	D
LPV DA	1089/18		200 (200-1/2)	
LNAV/VNAV DA	1395/55		506 (500-1)	
LNAV MDA	1360/24 471 (500-1/2)		1360/50 471 (500-1)	
<b>C</b> CIRCLING	1460-1 564 (600-1)		1560-1 3/4 664 (700-1 3/4) 1560-2 664 (700-2)	



SE-1, 20 FEB 2025 to 20 MAR 2025

SE-1, 20 FEB 2025 to 20 MAR 2025

HIRL all Rwy's  
TDZ/CL all Rwy's except 27